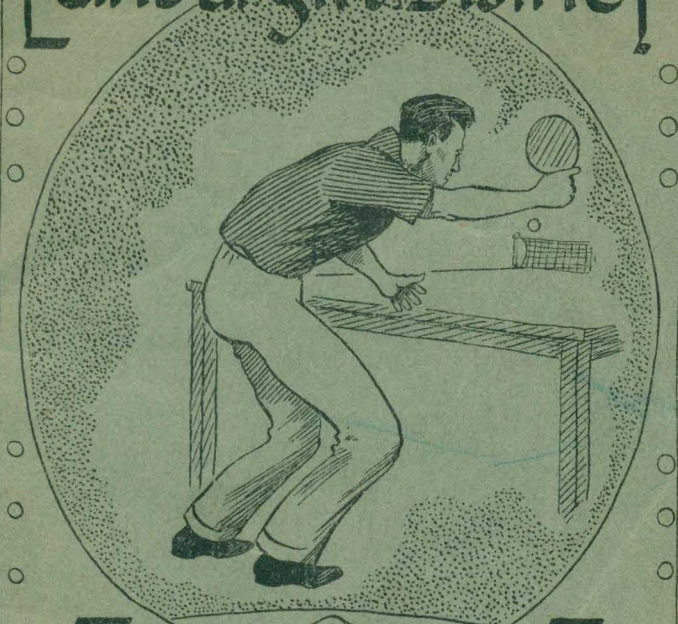


Edinburgh & District



T
A
B
L
E

LEAGUE
HANDBOOK

SEASON 1938-39.

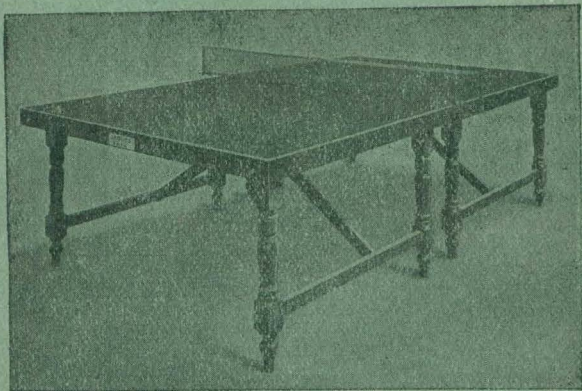
T
E
N
N
I
S

PRICE - SIXPENCE

Bill McIntyre: Civil Service Club.

JAQUES

FOR
TABLE TENNIS



Tournament Table No. 6736. £9-17-6 each.
THREE TIMES WORLD CHAMPION
Jaques Tables were used at World's Championships

1936 PRAGUE
1937 BADEN
1938 LONDON

HAYDON CHAMPIONSHIP T. T. BALL

Affiliated Club Price 2/9 per doz.

E.T.T.A. League Official. Selected for Weight and Spin.
BATS - POSTS - NETS - SCORERS - ETC.

Write for Jaques Standard T. T. Catalogue Free—

JOHN JAQUES & SON, LTD. 37/39 KIRBY ST.,
LONDON, E.C.1.

The Edinburgh and District Table Tennis League

(Affiliated to the Scottish Table Tennis Association)

OFFICE-BEARERS

Chairman :

J. A. T. BROWN, Esq. (Inverleith).

Hon. Secretary and Treasurer :

J. S. BATHGATE, Esq.,
4 Boswall Terrace, Edinburgh, 5.
Telephone : Granton 84519.

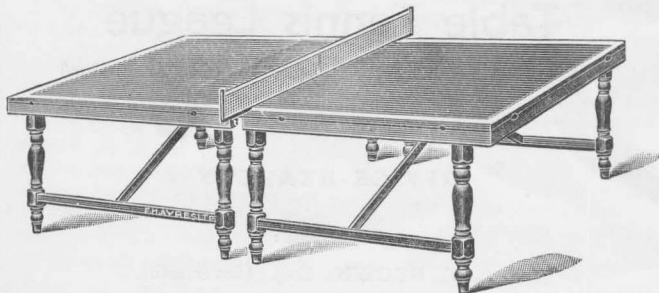
Committee :

- I. C. GODFREY, Esq. (Edin. Indian Association).
- W. E. KILPATRICK, Esq. (Five Racquets).
- A. MANCLARK, Esq. (Victoria).
- A. J. MCLEAN, Esq. (R.D.O.).
- H. J. PATERSON, Esq. (Ministry of Labour, Div. Office).
- W. PIRIE, Esq. (Ingliston).
- G. VERGHESE, Esq. (Edin. Indian Association).

Editor of Handbook :

G. VERGHESE, Esq.

SPECIAL DISCOUNTS TO CLUBS



AYRES "TOURNAMENT" TABLE . . . £9-5-0
(As used last season by the American Exhibition Team)

OTHER MODELS from . . . 35/-

■ WE HAVE THE LARGEST
■ STOCK OF TABLE-TENNIS
■ EQUIPMENT IN THE
■ CITY . . .

CLEGHORN

SPORTS SPECIALISTS

129 PRINCES ST.

PHONE 31255—2 Lines.

HISTORY.

The Edinburgh and District Table Tennis League was first formed in September 1935. It owes its formation to the initiative of members of the Y.M.C.A. who were responsible for calling the inaugural meeting. As a result of that meeting the first committee was set up with Mr. Brown and Mr. Crossland as Chairman and Secretary respectively. To Mr. Brown fell the task of framing a constitution, and the success of the League in those early days was in no small measure due to his enthusiasm.

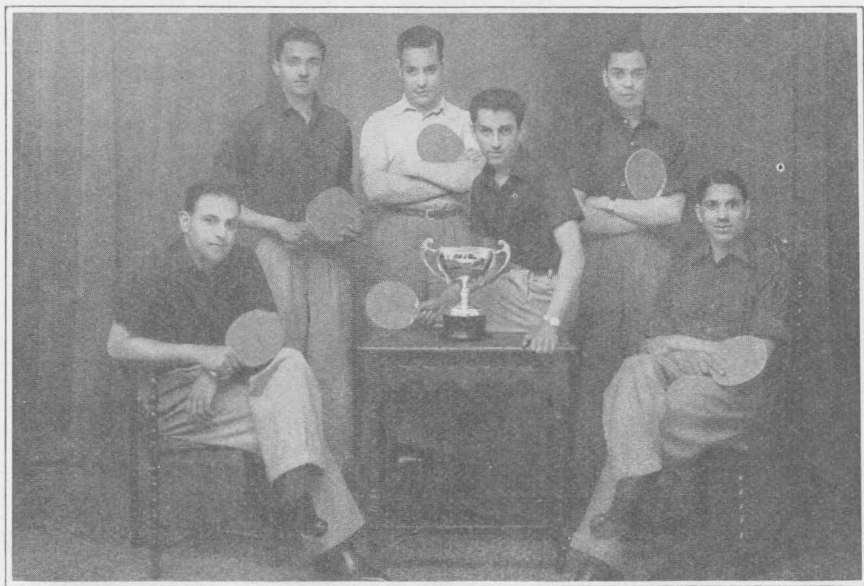
In 1936 Mr. Brown again assumed the chairmanship and Mr. Bathgate became Secretary. They have stayed in office since, and together have been responsible for establishing the League on sound foundations.

The progress of the E. & D. T. T. League has been very rapid as the following figures reveal :—1935-36, eighteen clubs ; 1936-37, twenty-three clubs ; 1937-38, twenty-nine clubs. In the present season the number of clubs in membership has risen to forty-four, and this number is likely to be added to by the addition of a ladies division. Of the various Table Tennis Leagues throughout Scotland the Edinburgh League is by far the largest.

Since its formation the Edinburgh League has undertaken representative matches with the Glasgow League, and later with the Stirlingshire Association. These now form a regular feature of the League's activities. In February 1938 a visit of a team of international "stars" was arranged. The committee was faced with a big task in undertaking this enterprise, but were optimistic that the venture would be successful. The result is now history, and the great crowds which filled the Oddfellows Hall proved that the game of table tennis had won its place in public favour as a thrilling spectacle.



J. A. T. BROWN, Esq.,
Chairman of the Edinburgh and District
Table Tennis League.



League Champions, 1937-38, Edinburgh Indian Association.

EDITORIAL.

In this, the fourth year of the existence of the League, it is my proud privilege to have been given the opportunity of editing the first Handbook. To-day the League is firmly established, thanks to the enthusiasm shown by individual members of the teams, and also to the untiring energy and hard work of the excellent committees which have taken office during the last four years. I must particularly pay great credit to Mr. J. A. T. Brown and Mr. J. S. Bathgate who have given so much of their time and energy to bring the League into a solid working proposition. They have had to fight their way on occasions, to encounter opposition and severe criticism. But these things are inevitable when working for a cause and success is all the sweeter when it is achieved as they have done.

It is a sad reflection to think that the game in many parts of England is streets ahead of any that we see in Scotland. That is due to the fact that every encouragement is given in England to youngsters to develop the game. Very few games can equal Table Tennis to help one to keep fit when compelled to be indoors on dark dreary winter evenings. The visit of the American stars, and the display they put up during the last season, was an eyeopener to all of us who are actively or otherwise interested in the game. This has given the necessary fillip to the game in Edinburgh, with the result that to-day we have over forty clubs in the League. We are also particularly pleased to see that the ladies have formed a League of their own.

We hope the day is not far off when Scotland will be able to hold her own against England in this little indoor game we so dearly love.

I must thank all the members of the Committee who have given me such valuable help and advice in compiling this Handbook, and our advertisers without whose help this publication would not have been possible.

Finally, I must thank our young artist, Mr. H. C. Paterson, for the excellent drawing, a reproduction of which appears on the front page.

G. VERGHESE.

TABLE TENNIS

EVERYTHING FOR THE GAME

AT



TABLES

9 x 5	£2-10-0	£3-7-6	£5-5-0
8 x 4	£2-3-0	£2-17-6	
Tops only	£1-9-0	£1-13-0	£2-2-6 £2-10-0 £3-15-0

BATS

THE BARNA	...	3/9	THE KEN HYDE	...	2/6
„ SZABADOS	...	3/6	„ HAGUENAUER	...	2/6
PRACTICE	9d.	1/-	1/6 2/6 3/6

BALLS

THE METEOR	...	2/6 doz.	THE AYRES	...	2/6 doz.
„ BARNA	...	3/- & 4/-	„ HALEX	...	1/6 „
THE PRACTICE	1/- doz.

POSTS

9d.	1/6	2/-	2/6	5/6 pair.
-----	-----	-----	-----	-----------

NETS

Cotton Twine	...	1/6	1/9	2/-	Leno	...	9d.	10d	1/-
--------------	-----	-----	-----	-----	------	-----	-----	-----	-----

SETS

2/-	2/6	5/-	7/6	10/6	15/-
MATCH SETS	10/6	12/6	15/- 21/-

SEND FOR ILLUSTRATED LIST FREE

THORNTON'S
 THE SPORTS HOUSE
 78-79 PRINCES STREET EDINBURGH

THE EDINBURGH AND DISTRICT TABLE TENNIS LEAGUE.

CONSTITUTION.

1.—The League shall be known as “THE EDINBURGH AND DISTRICT TABLE TENNIS LEAGUE”.

2.—The Office-Bearers of the League shall consist of the Chairman, Honorary Secretary and Treasurer, who, with seven members to be elected at the Annual General Meeting, will constitute the Committee which shall be elected annually, and any retiring member shall be eligible for re-election. (No club shall be entitled to have more than two representatives on the Committee.)

3.—The Annual General Meeting shall be held at the end of the month of April and each club in the Competition shall be entitled to send two delegates. The meeting shall be called by circular to each club and seven days notice of the meeting shall be given. At the Annual General Meeting the Office-Bearers, members of Committee and each delegate present shall have one vote.

4.—The Committee shall have full powers to decide matters arising in connection with the League. Five shall form a quorum, and the Chairman at any meeting in connection with the League shall have a deliberative as well as a casting vote.

5.—The Games under the League shall be played according to the rules of the English Table Tennis Association, subject to any alterations which may be passed by a majority voting at the Annual General Meeting of the League.

All tables in the League must conform to the Standard laid down by the English Table Tennis Association regarding size of table and the required bounce of the ball on the playing surface.

6.—The League shall be open to such clubs in Edinburgh and District as the Committee may decide, each club admitted shall pay in advance an Annual Subscription of 5/-.

7.—All players must be bona-fide members of the club for which they play. No players shall play for more than one club in the League in the same season. No Club may enter more than one team in the League.

8.—All matches shall be played on an evening suitable to both teams during the week arranged by the Committee. If no other arrangement is made, the match will be played on Friday

For Best Reports of all the Sports

THE
EVENING DISPATCH

Edinburgh's Smartest Evening Paper

TABLE TENNIS

Everything for the Game

Better and Cheaper Tables! Bats!! Posts!!!

AYRES BALLS . . . Club Price 2/3

MACKENZIE'S SPORTS SHOPS

**NEXT EMPIRE
& KING'S THEATRES**

evening. If it is desired to play the match during some other week a full week's notice must be given to the Secretary of the opposing team, and the League Secretary notified of the change.

9.—A match is played between two sides of five players each, and consists of twenty-five single games, played by each of the five players on one side playing each of the five players on the opposing side. At any time during the match, or in the event of lack of time, the side which has won the match by winning at least thirteen games have the option of closing the match.

10.—No player or club in membership of the League shall, without the consent of the Hon. Secretary, participate in any match, exhibition or otherwise, which is undertaken by any person or persons for the purpose of financial gain.

11.—The rules shall only be capable of being altered, added to, or amended on notice being given to the League Secretary, of any proposed alteration not later than the end of March, which notice shall give in detail the proposed alteration, addition or amendment. A motion to alter, amend or add to the rules must be carried at the Annual General Meeting by a majority of at least two-thirds of those present and voting at the meeting.

INSTRUCTIONS TO SECRETARIES AND PLAYERS.

1.—When filling in players' names, etc., on score sheets, please use **block letters**. Score sheets should be written in ink if possible. Give players' initials.

2.—Score sheets must be forwarded to the Hon. Secretary by Saturday of each week.

3.—It is essential that suitable accommodation and lighting be provided for all matches. Players are prohibited from wearing **white or light coloured clothing that might tend to unsight an opponent.**

4.—To avoid possible complaints and resultant loss of points observe carefully the rule regarding postponed matches. Although not specifically detailed in the Constitution postponed fixtures should be played during the week immediately following that in which they were due to be played.

5.—Read thoroughly and learn the rules of Table Tennis as inserted in this handbook. Note particularly the rules regarding service and volleying.

6.—Watch the results of matches and League Tables in the *Evening Dispatch* and *Evening News* every Thursday.

LEAGUE TABLES.

1937-38

The Marine Club failed to fulfil all its fixtures in the Edinburgh and District League, and accordingly, all that club's matches were ignored in the compilation of the First Division table. The final League positions were:—

FIRST DIVISION.

	P.	Matches.		Pts.
		W.	L.	
Indian Association	16	16	0	32
Inverleith	16	14	2	28
Five Racquets	16	9		18
Central Y.M.C.A.	16	7	9	14
North Merchiston Y.M.C.A.	16	6	10	12
12th Leith B.B.	16	6	10	12
Leith Emp. Exchange	16	5	11	10
Grosvenor House	16	5	11	10
Fet Lor	16	4	12	8
Marine	0	0	0	0

SECOND DIVISION.

Surgeons' Hall	18	17	1	34
St. Martins	18	15	3	30
Ministry of Labour Div. Office	18	15	3	30
S.C.W.S.	18	10	8	20
Pleasance Trust	18	9	9	18
North Merchiston Old Boys	18	8	10	16
R.D.O.	18	7	11	14
38 Club	18	6	12	12
Bank Villa	18	3	15	6
Crafts	18	0	18	0

THIRD DIVISION.

New Empire	16	15	1	30
Meltax	16	14	2	28
Civil Service Club	16	12	4	24
Ingliston	16	10	6	20
Perthshire	16	9	7	18
Gorgie Transport	16	5	11	10
Bruce Peebles	16	5	11	10
St. Kentigern's	16	2	14	4
O.N.D.	16	0	16	0

LEAGUE CHAMPIONSHIP

FIRST DIVISION

WINNER

1935-36. Joint Leaders { Edin. Indian Association.
Chinese Students.

1936-37. Edin. Indian Association.

1937-38. " " "

RUNNER-UP

Inverleith.

"

SECOND DIVISION

1936-37. Grosvenor House.

1937-38. Surgeons' Hall.

Marine.

St. Martins

THIRD DIVISION

1937-38. New Empire.

Meltax.

INDIVIDUAL CHAMPIONSHIP

OPEN SINGLES

1935-36. J. Crossland (Central Y.M.C.A.)

1936-37. R. Haywood (Inverleith).

1937-38. D. V. Reddy (Edin. Indian Assoc.)

W. E. Kilpatrick

R. Sinton.

G. P. Guimont.

MINOR SINGLES

1936-37. M. R. Rifaat (Grosvenor House).

1937-38. T. Tuller (Surgeons' Hall).

A. Murray.

L. Woolman.

OPEN DOUBLES

1935-36. J. Crossland and D. Neilson (Central Y.M.C.A.)

1936-37. R. White and R. J. McMurdo (Leith Employ. Ex.)

1937-38. G. P. Guimont and M. R. Rifaat (Grosvenor House).

Brown and Lamb.

{ Kilpatrick and
Chrystal.

{ D. V. Reddy
and G. Verghese

TABLE TENNIS

Sets and Equipment in great variety.

Complete Sets attractively boxed at popular prices.

Wide range of selected Bats in many models.

Stockists of "Barna" Championship Balls and Bats,
and "Ayres" Championship Balls.

Table Tops and Tables—Special Quotations available.

CLUB TERMS.

BRYCE'S SPORTS SHOP

1 SPITTAL STREET

for "better value" Winter Sports and Games.

Ayres

Table Tennis Specialists

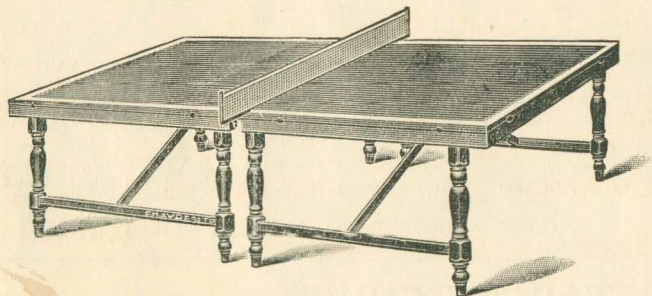


Table Tennis History in Scotland

The first Exhibition of Table Tennis by Internationals was held in Edinburgh in February 1938. AYRES Tables and Balls were used exclusively.

The "Tournament" Table

Voted by leading Internationals to be the fastest on the market.

£9-5-0

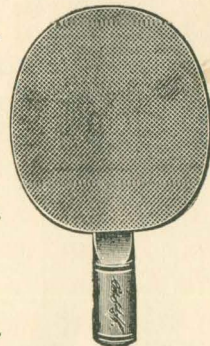
The "Regulation" Compact

with 1" top . . . £7-12-6

Other Models . . . £2-2-0 to £5-5-0

BATS

The Ayres range of Autograph Models include those of World Champions "J. McClure" and "Sol Schiff", and such well-known players as Ernest Buble, L. M. Bromfield, G. W. Marshall, etc. . 3/- per bat.



BALLS—The Ayres Championship.

Edinburgh's only Official Ball.

2/6 and 3/6 per dozen.

F. H. AYRES, LTD. *EVERYTHING FOR
TABLE TENNIS*

111, ALDERSGATE STREET,
LONDON, E.C.1.

FIXTURE LIST

FIRST DIVISION.

Week Commencing	A	B	C	D	E	F	G	H	K	L
OCTOBER 10	B	Aa	D	Ca	Fa	Ea	H	Ga	L	Ka
" 17	Da	K	Fa	A	Ha	C	La	E	Ba	G
" 24	F	Ga	H	Ka	L	Ca	B	Ca	D	Ea
" 31	Ha	E	La	G	Ba	K	Da	A	Fa	C
NOVEMBER 7	L	Ca	B	Ea	D	Ga	F	Ka	H	Aa
" 14	Ca	Da	A	B	Ga	Ha	E	F	—	—
" 21	—	—	Ea	Fa	C	D	Ka	La	G	H
" 28	Ga	F	—	L	K	Ba	A	—	Ea	Da
DECEMBER 5	K	H	G	—	—	L	Ca	Ba	Aa	Fa
" 12	Ea	La	Ka	Ha	A	—	—	D	C	B
1939										
JANUARY 16	Ba	A	Da	C	Fa	Ea	Ha	G	La	K
" 23	D	Ka	F	A	Ha	Ca	L	Ea	B	Ga
" 30	Fa	G	Ha	K	La	A	Ba	C	Da	E
FEBRUARY 6	H	Ea	L	Ga	B	Ka	D	Aa	F	Ca
" 13	La	C	Ba	E	Da	G	Fa	K	Ha	A
" 20	C	D	Aa	Ba	G	H	Ea	Fa	—	—
" 27	—	—	E	F	Ca	Da	K	L	G	H
MARCH 6	G	Fa	—	La	Ka	B	Aa	—	E	D
" 13	Ka	Ha	Ga	—	—	La	C	B	A	F
" 20	E	L	K	H	Aa	—	—	Da	Ca	Ba

A Five Racquets.

B 12th Leith B.B. Ex-Members.

C Leith Employment Exchange.

D St. Martin's.

E Indian Assoc.

F Surgeons' Hall.

G Grosvenor House.

H North Merc.

Y.M.C.A.

K Central Y.M.C.A.

L Inverleith.

SECOND DIVISION.

Week Commencing	A	B	C	D	E	F	G	H	K	L
OCTOBER 10	B	Aa	D	Ca	Fa	Ea	H	Ga	L	Ka
" 17	Da	K	Fa	A	Ha	C	La	E	Ba	G
" 24	F	Ga	H	Ka	L	Aa	B	Ca	D	Ea
" 31	Ha	E	La	G	Ba	K	Da	A	Fa	C
NOVEMBER 7	L	Ca	B	Ea	D	Ga	F	Ka	H	Aa
" 14	Ca	Da	A	B	Ga	Ha	E	F	—	—
" 21	—	—	Ea	Fa	C	D	Ka	La	G	H
" 28	Ga	F	—	L	K	Ba	A	—	Ea	Da
DECEMBER 5	K	H	G	—	—	L	Ca	Ba	Aa	Fa
" 12	Ea	La	Ka	Ha	A	—	—	D	C	B
1939										
JANUARY 16	Ba	A	Da	C	Fa	Ea	Ha	G	La	K
" 23	D	Ka	F	Aa	Ha	Ca	L	Ea	B	Ga
" 30	Fa	G	Ha	K	La	A	Ba	C	Da	E
FEBRUARY 6	H	Ea	L	Ga	B	Ka	D	Aa	F	Ca
" 13	La	C	Ba	E	Da	G	Fa	K	Ha	A
" 20	C	D	Aa	Ba	G	H	Ea	Fa	—	—
" 27	—	—	E	F	Ca	Da	K	L	G	H
MARCH 6	G	Fa	—	La	Ka	B	Aa	—	E	D
" 13	Ka	Ha	Ga	—	—	La	C	B	A	F
" 20	E	L	K	H	Aa	—	—	Da	Ca	Ba

A Pleasance Trust.

B S.C.W.S.

C New Empire.

D Meltax.

E Civil Service Club.

F Marine.

G Fet Lor.

H Ministry of Labour

Div. Office.

K R.D.O.

L North Merchiston
Old Boys.

THIRD DIVISION.

Week		THIRD DIVISION.							
Commencing		A	B	C	D	E	F	G	H
OCTOBER	10	B	Aa	D	Ca	F	Ea	H	Ga
"	17	Da	G	Fa	A	Ha	C	Ba	E
"	24	F	Ea	H	Ga	B	Aa	D	Ca
"	31	Ha	C	Ba	E	Da	G	Fa	A
NOVEMBER	7	—	—	—	—	—	—	—	—
"	14	C	D	Aa	Ba	G	H	Ea	Fa
"	21	Ea	Fa	Ga	Ha	A	B	C	D
"	28	G	H	E	F	Ca	Da	Aa	Ba
DECEMBER	5
"	12
"	1939
JANUARY	16	Ba	A	Da	C	Fa	E	Ha	G
"	23	D	Ga	F	Aa	H	Ca	B	Ea
"	30	Fa	E	Ha	G	Ba	A	Da	C
FEBRUARY	6	H	Ca	B	Ea	D	Ga	F	Aa
"	13	—	—	—	—	—	—	—	—
"	20	Ca	Da	A	B	Ga	Ha	E	F
"	27	E	Fa	G	H	Ca	Ba	C	Da
MARCH	6	Ga	Ha	Ea	Fa	A	D	A	B
"	13
"	20

A U.A.B.

B E.C.T. Gorgie
Transport.

C University Staff.

D Students.
E Victoria.

F Saughtonhall.

G Ingliston.
H Perthshire.

FOURTH DIVISION.

Week		FOURTH DIVISION.							
Commencing		A	B	C	D	E	F	G	H
OCTOBER	10	B	Aa	D	Ca	F	Ea	H	Ga
"	17	Da	G	Fa	A	Ha	C	Ba	E
"	24	F	Ea	H	Ga	B	Aa	D	Ca
"	31	Ha	C	Ba	E	Da	G	Fa	A
NOVEMBER	7	—	—	—	—	—	—	—	—
"	14	C	D	Aa	Ba	G	H	Ea	Fa
"	21	Ea	Fa	Ga	Ha	A	B	C	D
"	28	G	H	E	F	Ca	Da	Aa	Ba
DECEMBER	5
"	12
"	1939
JANUARY	16	Ba	A	Da	C	Fa	E	Ha	G
"	23	D	Ga	F	Aa	H	Ca	B	Ea
"	30	Fa	E	Ha	G	Ba	A	Da	C
FEBRUARY	6	H	Ca	B	Ea	D	Ga	F	Aa
"	13	—	—	—	—	—	—	—	—
"	20	Ca	Da	A	B	Ga	Ha	E	F
"	27	E	Fa	G	H	Ca	Ba	C	Da
MARCH	6	Ga	Ha	Ea	Fa	A	D	A	B
"	13
"	20

A O.N.D.

B R.A.F. Club.
C Royal Scots Club.

D St. Andrews.

E 1938 Club.
F Scotsman.

G Leamington.

H Braesend.

FIFTH DIVISION.

Week		A	B	C	D	E	F	G	H
Commencing									
OCTOBER	10	B	Aa	D	Ca	F	Ea	H	Ga
"	17	Ha	Ga	Fa	E	Da	C	B	A
"	24	Ga	H	Ea	F	C	Da	A	Ba
"	31	E	D	Ha	Ba	Aa	G	Fa	C
NOVEMBER	7	—	—	—	—	—	—	—	—
"	14	F	Ca	Ba	Ha	G	Aa	Ea	D
"	21	Ca	Fa	A	Ga	H	B	D	Ea
"	28	Da	E	G	A	Ba	Ha	Ca	F
DECEMBER	5
"	12
1939									
JANUARY	16	Ba	A	Da	C	Fa	E	Ha	G
"	23	H	G	F	Ea	D	Ca	Ba	Aa
"	30	G	Ha	E	Fa	Ca	D	Aa	B
FEBRUARY	6	Ea	Da	H	B	A	Ga	F	Ca
"	13	—	—	—	—	—	—	—	—
"	20	Fa	Ca	B	H	Ga	A	E	Da
"	27	C	F	Aa	G	Ha	Ba	Da	E
MARCH	6	D	Ea	Ga	Aa	B	H	C	Fa
"	13
"	20

- | | | |
|-----------------------------------|-----------------------------------|----------------------------------|
| A E.S.D. | D 29th Rovers. | G Kaledonian Sports Club. |
| B Western Recreation Club. | E Mason Memorial Club. | H Limpets. |
| C Gambit. | F Edinturgh Maccabi Assoc. | |

LADIES' DIVISION.

Week		A	B	C	D	E	F
Commencing							
NOVEMBER	14	B	Aa	Fa	Ea	D	C
"	21	Ca	E	A	Fa	Ba	D
"	28	Ea	F	Da	C	A	Ba
DECEMBER	5	F	Da	E	B	Ca	Aa
"	12	D	C	Ba	Aa	Fa	E
1939							
JANUARY	16	Ba	A	F	E	Da	Ca
"	30	C	Ea	Aa	F	B	Da
FEBRUARY	13	E	Fa	D	Ca	Aa	B
"	27	Fa	D	Ea	Ba	C	A
MARCH	13	Da	Ca	B	A	F	Ea

- | | | |
|-----------------------------------|-----------------|-----------------------------|
| A S.E.D. | C R.D.O. | E Ingliston. |
| B Western Recreation Club. | D E.S.D. | F Holy Cross Church. |

INTER-CITY MATCHES

v.

GLASGOW

1936	5-5 (H)
1937	5-6 (A)
1938	1-6 (H)

v.

STIRLINGSHIRE

1937	4-2 (H)
1938	6-1 (A)

INTER-CITY TEAMS

1938

v.

STIRLINGSHIRE

G. P. Guimont (Grosvenor House), J. A. T. Brown (Inverleith),
M. R. Rifaat (Grosvenor House), W. E. Kilpatrick (5 Racquets),
G. Verghese (Indian Association), T. Tuller (Surgeons' Hall),
T. Borthwick (North Merchiston Y.M.C.A.)

v.

GLASGOW

G. P. Guimont (Grosvenor House), J. A. T. Brown (Inverleith),
D. V. Reddy (Indian Association), W. E. Kilpatrick (5 Racquets),
G. Verghese (Indian Association), M. R. Rifaat (Grosvenor House),
A. G. Abraham (Indian Association).

THE LAWS OF TABLE TENNIS.

(As adopted by the International Table Tennis Federation, and English Table Tennis Association.)

SINGLES.

1.—**THE TABLE.**—The table shall be in surface rectangular, 9 ft. in length, 5 ft. in width; it shall be supported in such a way that its upper surface shall be 2 ft. 6 ins. above the floor, and shall lie in a horizontal plane.

It shall be made of any material, and shall yield a uniform bounce of not less than 8 ins. and not more than 9 ins. when a standard ball is dropped from a height of 12 ins. above its surface.

The upper surface of the table shall be termed the "playing surface"; it shall be non-reflecting, of a dark colour with a white line $\frac{3}{4}$ in. broad along each edge.

The lines at the 5 ft. edges or ends of the playing surface shall be termed "end lines". The lines at the 9 ft. edges or sides of the playing surface shall be termed "side lines".

2.—**THE NET AND ITS SUPPORTS.**—The playing surface shall be divided into two courts of equal size by a net running parallel to the end lines and 4 ft. 6 ins. from each. The net shall be 6 ft. in length; its upper part along its whole length shall be 6 ins. above the playing surface; its lower part along the whole length shall be close to the playing surface. The net shall be attached at each end to an upright post 6 ins. high; the outside limits of each post shall be 6 ins. outside the side line on the same side.

3.—**THE BALL.**—The ball shall be spherical. It shall be made of celluloid, pale in colour; it shall not be less than $4\frac{1}{2}$ ins. nor more than $4\frac{3}{4}$ ins. in circumference; it shall not be less than 37 grains (2.40 grammes) nor more than 39 grains (2.53 grammes) in weight.

4.—**THE RACKET.**—The racket may be any material, size, shape, or weight.

5.—**THE SCORING OF POINTS.**—A game shall be won by the player who first wins 21 points, unless both players shall have scored 20 points, when the winner of the game shall be he who first wins two points more than his opponent.

6.—THE CHOICE OF ENDS AND SERVICE.—The choice of ends and the right to be server or striker-out in every match shall be decided by toss, provided that, if the winner of the toss chose the right to be server or striker-out, the other player shall have the choice of ends, and vice versa, and provided that the winner of the toss may, if he prefer it, require the other player to make the first choice.

7.—THE CHANGE OF ENDS AND SERVICE.—After five points the striker-out shall become the server, and the server the striker-out, and so on after each five points until the end of the game or the score 20 all. At the score 20 all the striker-out shall become the server, and the server the striker-out, and so on after each point until the end of the game. The player who served first in a game shall be striker-out first in the immediately subsequent game, and so on until the end of a match.

The player who started at one end in a game shall start at the other in the immediately subsequent game, and so on until the end of the match. Where the match consists of only one game, or, where it consists of more than one game, in the deciding game of the match, the players shall change ends at the score 10.

8.—OUT OF ORDER OF ENDS OR SERVICE.—If a player serve out of his turn, the player who ought to have served shall serve as soon as the mistake is discovered, unless a group of five services shall have been completed before such discovery, when the service in the subsequent groups of services shall continue, in the same order, as if the sequence had not been discontinuous. In any circumstances, all points scored before the discovery shall be reckoned.

If the players shall not have changed ends when ends should have been changed, the players shall change ends as soon as the mistake is discovered, unless a game shall have been completed since the error, when the error shall be ignored. In any circumstances, all points scored before the discovery shall be reckoned.

9.—THE ORDER OF PLAY.—The server shall first make a good service, the striker-out shall then make a good return and thereafter server and striker-out shall each alternately make a good return.

10.—A GOOD SERVICE.—The service shall be delivered by the server releasing the ball by hand only, without imparting of

spin. The ball shall then be struck so that it touch first the server's court and then, passing directly over or round the net, touch the striker-out's court.

At the moment of the impact of the racket on the ball in service, both shall be behind the end line of the server's court and between an imaginary continuation of the side lines.

11.—A GOOD RETURN.—A ball having been served or returned in play shall be struck by the player so that it pass directly over the net or round the net and touch directly the opponent's court ; provided that, if the ball, having been served and returned in play, returns with its own impetus over the net or round the net, it may be struck, while still in play, by the player so that it touch directly the opponent's court.

12.—A LET.—The rest is a let:

(a) If the ball served in passing over the net touch it or its supports, provided the service either be otherwise good or be volleyed by the striker-out.

(b) If a service be delivered when the striker-out is not ready, provided always that he may not be deemed to be unready if he attempts to strike at the ball.

(c) If either player be prevented by an accident, not under his control, from serving a good service or making a good return.

(d) If either player lose the point, as provided in Law 13 (c), (d), (e), or Law 14, owing to an accident not within his control.

13.—A POINT.—Either player shall lose a point :

(a) If he fail to make a good service except as provided in Law 12.

(b) If a good service or a good return having been made by his opponent, he fail to make a good return, except as provided in Law 12.

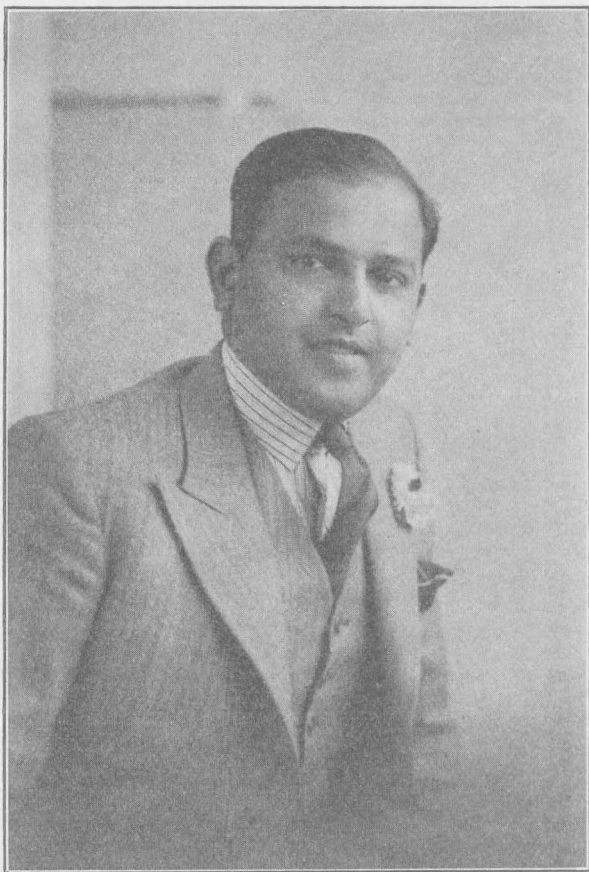
(c) If he, or his racket, or anything that he wears or carries, touch the net or its supports while the ball is in play.

(d) If he, or his racket, or anything that he wears or carries, move the playing surface while the ball is in play.

(e) If his free hand touch the playing surface while the ball is in play.

14.—A POINT.—Either player shall lose the point :

(a) If before the ball in play shall have passed over the end lines or side lines not yet having touched the playing surface on



G. VERGHESE, Esq.,
Editor of Handbook.



J. S. BATHGATE, Esq.,
Hon. Secretary and Treasurer.

his side of the table since being struck by his opponent, it come in contact with him or anything that he wears or carries.

(b) If at any time he volley the ball, except as provided in Law 12 (a).

15.—IN PLAY.—The ball is in play from the moment at which it is projected or dropped from the hand in service until :

(a) It has touched one court twice consecutively.

(b) It has, except in service, touched each court alternately without having been struck by the racket intermediately.

(c) It has been struck by either player more than once consecutively.

(d) It has touched either player or anything that he wears or carries, except his racket or his racket hand below the wrist.

(e) On the volley it come in contact with the racket or the racket hand below the wrist.

(f) It has touched any object other than the net, supports or those referred to above.

16.—FURTHER DEFINITIONS.—The period during which the ball is in play shall be termed a rest.

A rest the result of which is scored shall be termed a point.

A rest the result of which is not scored shall be termed a let.

The player who first strikes the ball during a rest shall be termed the server.

The player who next strikes the ball during a rest shall be termed the striker-out.

If the ball, in passing over the net, or round the net, touch it or its supports, it shall, nevertheless, be considered to have passed directly, except as referred to in Law 12 (a).

If the ball in play come in contact with the racket or racket hand, not yet having touched the playing surface on one side of the net since last being struck on the other side, it shall be said to have been volleyed.

The racket hand is the hand carrying the racket ; the free open hand is the hand not carrying the racket.

DOUBLES.

17.—The above laws shall apply in the Doubles Game except as below.

18.—THE TABLE.—The surface of the table shall be divided into two parts by a white line $\frac{1}{8}$ in. broad, running parallel with

the side lines and distant from each of them 2 ft. $5\frac{3}{4}$ in. This line shall be termed the service-line. The part of the table surface on the nearer side of the net and the right of the service-line in respect to the server, shall be called the server's right half-court, that on the left in respect to him the server's left half-court. The part of the table surface on the farther side of the net, and the left of the service-line in respect to the server, shall be called the striker-out's right half-court, that on the right in respect to the server the striker-out's left half-court.

19.—A GOOD SERVICE.—The service shall be delivered as otherwise provided in Law 10, and so that it touch first the server's right half-court or the centre line on his side of the net, and then passing directly over or round the net, touch the striker-out's right half-court or the centre line on his side of the net.

20.—THE CHOICE OF ORDER OF PLAY.—The pair who have the right to serve the first five services in any game shall decide which partner shall do so, and the opposing pair shall then decide similarly which shall first be striker-out.

21.—THE ORDER OF SERVICE.—The first five services shall be delivered by the selected partner of the pair who have the right to do so, and shall be received by the selected partner of the opposing pair. The second five services shall be delivered by the striker-out of the first five services, and received by the partner of the server of the first five services. The third five services shall be delivered by the partner of the server of the first five services and received by the partner of the striker-out of the first five services. The fourth five services shall be delivered by the partner of the striker-out of the first five services and received by the server of the first five services. The fifth five services shall be delivered as the first five services. And so on, in sequence, until the end of the game, or the score 20 all, when the sequence of serving and striking-out shall be uninterrupted, but each player shall serve only one service in turn until the end of the game.

In a one game match, or the deciding game of the match of more than one game, the pair that served the first five services has the right to alter their order of striking out or that of their opponents at the score 10.

22.—OUT OF ORDER OF STRIKING-OUT.—If a player act as striker-out out of his turn, the player who ought to have acted as striker-out shall be striker-out as soon as the mistake is discovered, unless a group of five services shall have been completed before such discovery, when the order of striking-out shall continue in the subsequent groups of services as if the sequence had not been discontinuous. In any circumstances, all points scored before the discovery shall be reckoned.

23.—THE ORDER OF PLAY.—The server shall first make a good service, the striker-out shall then make a good return, the partner of the server shall then make a good return, the partner of the striker-out shall then make a good return, the server shall then make a good return, and thereafter each player alternately in that sequence shall make a good return.

APPENDIX TO LAWS.

KNOTTY POINTS.

Decisions of the Rules Committee of the International Table Tennis Federation.

1.—EDGE BALLS.—The phrase, "Table Surface" is to be interpreted as including the top edges and corners of the table-top, and a ball in play which strikes these latter is therefore good and still in play; though if it strikes evidently the side of the table-top below the edge, it becomes dead and counts against the last striker.

2.—BALL RETURNED WITH EMPTY HAND.—If a player drop his racket he cannot return the ball with empty hand. (See definition, "the racket hand is the hand carrying the racket.")

3.—RACKET THROWN AT BALL.—If in returning the ball the racket leaves the player's hand, it is a good return only if it were still in his hand at the moment of contact with the ball (see Law 11, "a ball . . . shall be struck"), and if it do not touch the net or move the table surface (Law 13 *c, d*) before the ball is out of play.

4.—FINGER-SPIN IN SERVICE.—"Any form of spin in service imparted by any agency but the racket is prohibited. Umpires are instructed in any case of doubt in each match to warn the server in the first instance, declaring a "let," and in every subsequent case of doubt to give the decision against the server."

5.—MISSED SERVICE.—If a player in attempting to serve miss the ball altogether, it is a lost point (Laws 10 and 15) because the ball was in play from the moment it left the server's hand, and a good service has not been made of the ball already in play.

6.—VOLLEYED NET SERVICE.—A net service is a let not only if otherwise good but also if it be volleyed by the striker-out (See Laws 12 (a) and 14 (b).)

7.—BALL FRACTURED IN PLAY.—If the ball split or become otherwise fractured in play, *affecting a player's return*, the rest is a let [Law 12 (c)]. It is the umpire's duty to stop play, recording a let, when he has reason to believe that the ball in play is fractured or imperfect; and to decide those cases in which the faulty ball is clearly fractured in actually going out of play, and in no way handicaps the player's return, when the point should be scored. In all cases of doubt, however, he should declare a let.

8.—FIXTURES.—A moving spectator, a neighbouring player, a sudden noise, i.e., any neighbouring object *in movement* (except a partner) should be regarded as an accident not under control [Law 12 (c)], interference from which implies a let. A stationary spectator, fixed seating, the umpire, the light, a near-by table, a continuous sound of even volume, i.e., any *relatively constant or motionless* hazard, should not be so regarded, and complaint against interference from it during play should be regarded as void.

"BARNA"

The Master Table
Tennis Ball and Racket.

"Barna" Balls.

Official E. T. T. A.

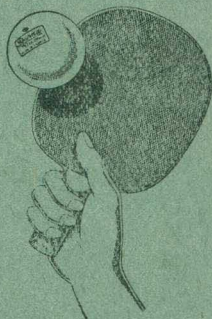
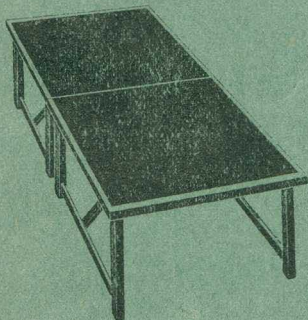
Club Prices :

Cartons.	Bulk.
1—Crown 2/9 doz.	2/7½ doz.
3—Crown 3/9 doz.	3/6 doz.

Adopted by the Liverpool &
District Table Tennis League.

"Barna" Rackets.

3/9 each (in green and white
cartons).



BRIGGS CLUB TABLES.

Club Tournament,
Paint Finish .. £7-15-0.

Special Club Tournament,
Cellulose Finish, £8-10-0.

Briggs Tournament,
Cellulose Finish, £9-12-6.

Briggs Super Champion-
ship. The World's Fastest
Table £9-19-0.

WEMBLEY POSTS & NETS.

Official New 6" height,
2 Posts (Adjustable
Extending) 6' Net.
The Set Boxed .. 7/6.

WALTER BRIGGS LIMITED,
46, Peartree Street, Goswell Road, E.C. 1.

Telephone 7304/5.

SPALDING CONTINUES TO LEAD IN ALL TABLE TENNIS EQUIPMENT



They offer a magnificent range of bats including the "ERIC FINDON" Autograph at 3/6, The "TOP-SPIN" at 3/11, The "POWER CHAMPION" for 2/9, The "CHAMPION" at 2/9, The T.I. "VILLA" at 2/6 and twenty-four others at various prices.

FROM ALL SPORTS DEALERS OR

SPALDING SPORT SHOPS

LONDON	: 318 High Holborn, W.C.1	-	78 Cheapside, E.C.2	-	212 Putney Bridge Road, S.W.15
BIRMINGHAM	- 21a Bennetts Hill	LIVERPOOL	- 20 Lord Street	SOUTHSEA	- 94 Palmerston Road
MANCHESTER	- 22 Mosley Street	LEEDS	- 3 King Edward Street	GLASGOW	- 60 St. Vincent Street
EDINBURGH	- 3 S. Charlotte St.	BELFAST	- 15 Lombard Street		

The Spalding "VILLA" Table

acclaimed by leading players as the fastest table ever produced.

The Spalding "NEW VILLA" BALL used in the last World's Championships is approved and officially adopted by the E.T.T.A., T.T.A.W. and I.F.S.T.T.A for 1938/9, is definitely the finest ball ever produced, and is ENTIRELY BRITISH MADE.