

EDDIE STILL WES 6359.

EDINBURGH AND DISTRICT



TABLE TENNIS  
LEAGUE

**Handbook**

SEASON 1966-67

ALL THE LATEST  
IN  
TABLE TENNIS  
FROM A  
BALL TO A TABLE

**MACKENZIE'S**  
**SPORTS SHOPS**

NEXT EMPIRE AND KING'S THEATRES  
EDINBURGH

**Our Only Address**

# THE EDINBURGH AND DISTRICT TABLE TENNIS LEAGUE

(Affiliated to the Scottish Table Tennis Association)

---

## OFFICE-BEARERS

Honorary President:

J. A. T. BROWN, ESQ.

Honorary Vice-Presidents:

J. WALKER, ESQ.

R. F. D. HAYMAN, ESQ.

Chairman:

P. H. CANDLIN, ESQ.

Vice-Chairman:

G. BREWERTON, ESQ.

Hon. Secretary:

G. H. SMITH, ESQ.,

2 Marchmont Road, Edinburgh, 9.

Phone: FOU 2288 (Home). WAV 2591 (Business).

Hon. Treasurer:

J. M. McCORMACK, ESQ.,

Bramdean Place, Edinburgh, 10.

Phone: MOR 1919 (Home). MUS 2163 (Business).

Committee:

W. LINCOLN (McTaggart Scott).

A. GOW (U.G.B.W.).

R. MITCHELL (McTaggart Scott).

S. McKAY (Muirhouse C.S.).

J. FINLAY (Murrayfield Memorial).

J. MORE (U.G.B.W.).

MRS J. MACKENZIE (Gambit).

## FOREWORD

---

The Handbook was introduced last year and at that time your Committee were rather unsure of the sort of reception it would get. It is pleasing to record that comments were most favourable and left your Secretary George Smith in no doubt that all the work he had put into it had been well worth while.

Our League continues to flourish and at the most recent count some 84 teams have applied for membership. Some old teams have disappeared whilst new ones have come along to take their place.

There are three things I would ask Club Secretaries to pay particular attention to this season. Firstly, are you sure that your playing conditions are all they should be, is the lighting, floor area, etc., up to or very near the I.T.T.F. standards which are laid down? Secondly, do you attempt to ensure that all your players are correctly turned out for matches, viz., all players in a team with the same colour of shirt, shorts, white socks and white rubbers? Lastly, do you make the end of match cup of tea as much of a social occasion as possible? All of these points are important and I earnestly ask your co-operation to see that as far as possible your club set a high standard in these items, particularly, of course, the first two.

There is one last thing I would like to mention and that is the New Service Rule which is being adopted on an experimental basis. Make sure you all know the rule and apply it.

To all players I extend good wishes for a happy and successful season.

P. H. CANDLIN,  
Chairman.

# CONSTITUTION

---

1. The League shall be known as "THE EDINBURGH AND DISTRICT TABLE TENNIS LEAGUE".

2. (a) The Office-bearers of the League shall consist of the Chairman, Vice-Chairman, Honorary Secretary and Honorary Treasurer, who, with at least seven members to be elected at the Annual General Meeting, will constitute the Committee. The Committee shall be elected annually and any retiring member shall be eligible for re-election. No Club shall be entitled to have more than two representatives on the Committee.

(b) The Committee shall have power to co-opt members who will not have voting power but who are not subject to the proviso in the final sentence of Paragraph 2 (a).

3. The Annual General Meeting shall be held at the end of the month of April and each Club in the League shall be entitled to send one representative for each two teams or part thereof entered in the League. The meeting shall be called by circular to each Club and seven days' notice of the meeting shall be given. At the Annual General Meeting each representative present shall have one vote.

4. A Special General Meeting of the League shall be convened on a resolution of the Committee or within fourteen days of receipt by the Secretary of a resolution signed by the authorised representatives of at least one-third of the Clubs in membership of the League, and Paragraph 3 of the Constitution respecting circulation of notices and procedure shall apply as at the Annual General Meeting. Only business detailed on the Agenda, which shall be circulated to all Clubs in League membership, may be discussed at a Special General Meeting. There shall be no "Any other business" item on the Agenda.

5. The Committee shall have powers to decide matters arising in connection with the League. The Committee shall have power to appoint representatives from each Division of the League to meet as necessary during the playing season to discuss the affairs of all the Divisions.

6. Five shall form a quorum of the League Committee and the Chairman at any meeting shall have a deliberate as well as a casting vote.

7. The Committee has authority to place any new team in any Division of the League.



## Part of the kit

Whether you take part or are merely a spectator, you need a cheque book. A cheque is often more convenient than cash. And it's so easy to open an account with the

**NATIONAL COMMERCIAL BANK  
OF SCOTLAND LIMITED**

## RULES

1. The games under the League shall be played according to the Rules of the Scottish Table Tennis Association, subject to any alterations which may be passed by a majority voting at the Annual General Meeting of the League.

All tables in the League must conform to the standard laid down by the Scottish Table Tennis Association regarding size of table and the required bounce of the ball on the playing surface.

2. The League shall be open to such Clubs in Edinburgh and District as the Committee may decide. Each Club admitted shall pay in advance an Annual Subscription of 15/- per team, plus the current affiliation fee per team to the Scottish Table Tennis Association.

3. All players must be registered members of the Club for which they play. All players must be registered with the Scottish Table Tennis Association at least 24 hours before playing in any match. Should any team play a non-registered player then all games won by that team, in the match in question, shall be void and will be awarded to the opposing team.

4. No team shall play in any match until all fees have been paid. Any team failing to comply with this rule shall forfeit that match.

5. Except with the permission of the League Committee no player shall play in more than one League, or for more than one Club in that League in the same season.

6. A Club may enter more than one team in the League, but each team so entered must pay the Annual League Subscription plus the current affiliation fee to the Scottish Table Tennis Association.

7. Any club entering more than one team in the League should register their three strongest players in the first team, their next three strongest players in the second team, and so on in order of playing strength for all teams. The Committee shall have the power to refuse the registration of any player where his playing strength warrants him playing for a higher team. No player shall be allowed to play for a lower team than the one for which he or she is registered, but may play for a higher team; having played a TOTAL of six matches with a higher team or teams in League matches other than the one for which he is registered, shall then only be eligible to play for the highest team played for during these matches.

Any player joining a club after initial registrations have been submitted should be registered for the team most suited to his playing strength.

Any club wishing to relegate a player or players to a lower team may apply to the Committee to do so.

8. (a) When entries are made to the League a home night for each team will be specified. A fixture list based on this information will be compiled and included in the Handbook.

(b) A copy of the Handbook will be supplied to each player on registration. A fee to cover cost will be charged.

9. (a) A match is played between two sides of three players each, and consists of 9 games (best of three sets), each player playing every opponent. One (1) Point will be awarded for a win. Prior to the commencement of each match the names of the players of the Home Team shall be inserted on the Match Score-card by the Captain of the Home Team and thereafter the names of the players of the Away Team shall be inserted by the Captain of the Away Team. The order of play shall be as printed on the Match Score-card.

(b) All matches should start at 7.30 p.m. Any player failing to arrive by 8 p.m. may forfeit all games in that match.

(c) The Home Club is responsible for posting the result on the addressed score card to reach the Match Secretary not later than seven days after the date of the match specified in the handbook. If the Match Secretary does not receive a result within this time, the match will be awarded to the Away side, unless the following conditions are satisfied:—

In the event of postponement of a match for any reason, it is the responsibility of the Home Club to notify the Match Secretary in writing within seven days of the date on which the match should have been played, giving details of the revised date and the reasons for re-arrangement. Failure will result in award of the match to the Away side.

In cases of doubt or dispute, complaints from either side must be in the hands of the Match Secretary within seven days of the original date of the match. All postponed matches must be played on or before the Friday of the last week of the season. In the event of a revised date suitable to both teams not having been agreed by two weeks before the end of the season, the HOME team must report the facts immediately to the Match Secretary. If the home team fails to do this and the match remains unplayed at the close of the season, the match will be awarded to the opposing AWAY side.



10. No player or Club in membership of the League shall, without the consent of the Committee, participate in any match, exhibition or otherwise which is undertaken by any person or persons for the purposes of financial gain. Likewise, no player or Club in membership of the League shall, without the consent of the Committee, accept any payment for participating in any match either by way of a fee or expense.

11. (a) Each Division of the League will consist of one Section.

(b) At the end of each season promotion and relegation will be effected as follows:—

1st Division: Bottom two teams will be relegated to 2nd Division.

Other Divisions: Top two teams will be promoted to the next higher Division, and the bottom two teams will be relegated to the next lower Division.

In the event of ties, games won and lost will be considered.

12. The Constitution and Rules shall only be capable of being altered, added to, or amended on Notice being given to the League Secretary of any proposed alteration not later than the end of March, which notice shall give in detail any proposed alteration, addition or amendment. A motion to alter, amend or add to the Constitution and Rules must be carried at the Annual General Meeting by a majority of at least two-thirds of those present and voting at the meeting.

## ADVICE TO PLAYERS

Assist your Club Secretary in every way you can; he needs it!

Know the Rules of the Game and of the League.

Take your share of umpiring at League matches, and, when playing, accept the umpire's decision with a good grace—be a good loser.

Do all you can to encourage the presence of spectators, not only at Club matches but at Inter-League events and Championships.

## ADVICE TO SECRETARIES

The League Committee are always willing to be of assistance to your Club. You are requested to make yourself familiar with the rules, but do not hesitate to seek the advice of a Committee Member if you are in doubt on any point.

Always answer correspondence promptly. If unable to give a definite reply for a few days send a post card to that effect.

Your attention is drawn particularly to the rules governing the night that a fixture should be played.

Score cards should be completed in ink, checked by both captains and sent, by the captain of the Home team, to the Match Secretary promptly, normally within 24 hours.

Study the comfort of your visitors and provide adequate dressing accommodation.

Make sure that information passed to you by the Committee is passed on to your members quickly.

If there is any change in the details printed in this handbook which affect any of your teams, it is your duty to notify, in writing, all the Club Secretaries in the Division concerned. You must also of course advise the Match Secretary without delay.

---

---

## UMPIRES WANTED

A Sub-Committee has been appointed within the S.T.T.A. to instigate the formation of a Scottish Umpires Association.

Anyone interested please contact the Scottish Secretary . . .

J. M. McCORMACK, ESQ.,  
BRAMDEAN PLACE,  
EDINBURGH, 10.

# **THORNTON'S**

**FOR  
SPORTS  
EQUIPMENT  
AND  
SPORTSWEAR**

**TABLE TENNIS  
FOOTBALL  
GOLF  
SWIMMING  
HOCKEY  
NETBALL  
BADMINTON  
SKATING  
ETC.**

**THORNTON'S  
78 PRINCES STREET  
EDINBURGH**

## TOURNAMENT RESULTS 1965/66

### East of Scotland Open

EVENT	WINNER	RUNNER-UP
Men's Singles	- M. Sugden (Edin.)	I. Barclay (Edin.)
Ladies' Singles	- L. Barrie (Glas.)	O. Hawkins (Glas.)
Junior Singles	- E. Sutherland (Edin.)	W. Gibbs (Edin.)
Men's Doubles	- R. Kerr/T. McMichael	J. Carswell/D. Hogg
Ladies' Doubles	- D. Donaldson/L. Barrie	O. Hawkins/D. Robertson
Mixed Doubles	- J. Dow/O. Hawkins	R. Kerr/P. Kerr

### Edinburgh Open

Men's Singles	- M. Sugden (Edin.)	I. Barclay (Edin.)
Ladies' Singles	- L. Barrie (Glas.)	O. Hawkins (Glas.)
Junior Singles	- W. Gibbs (Edin.)	D. McIntosh
Men's Doubles	- R. Kerr/T. McMichael	M. Sugden/ J. Hawkins
Ladies' Doubles	- L. Barrie/D. Donaldson	G. Shields/M. Coats
Mixed Doubles	- J. Dow/O. Hawkins	P. Cameron/L. Barrie

### Edinburgh Confined

Open Singles	- I. Barclay	R. Kerr
Ladies' Singles	- Mrs E. Hogg	Mrs P. Kerr
Minor Singles	- J. Finlay	A. Farmer
Open Doubles	- R. Kerr/T. McMichael	D. Hogg/R. McLeod

### Scottish Open

Men's Singles	- B. Burn (Eng.)	J. Dow (Glas.)
Ladies' Singles	- P. Hemmings (Eng.)	M. Heppell (Eng.)
Boys' Singles	- K. Lawrence (Eng.)	A. Hydes (Eng.)
Girls' Singles	- M. Heppell (Eng.)	P. Hemmings (Eng.)
Veteran Singles	- H. Baxter (Glas.)	L. Heppell (Eng.)
Men's Doubles	- B. Kean/B. Burn	R. Kerr/T. McMichael
Ladies' Doubles	- P. Hemmings/M. Heppell	D. Donaldson/L. Barrie
Mixed Doubles	- A. Hydes/M. Heppell	K. Lawrence/ P. Hemmings

### Scottish Closed

Men's Singles	- M. Sugden (Edin.)	I. Barclay (Edin.)
Ladies' Singles	- L. Barrie (Glas.)	D. Donaldson (Dun.)
Boys' Singles	- E. Sutherland (Edin.)	C. McLeod (Perth)
Men's Doubles	- R. Kerr/T. McMichael	M. Sugden/J. Hawkins
Ladies' Doubles	- L. Barrie/D. Donaldson	O. Hawkins/D. Robertson
Mixed Doubles	- P. Cameron/L. Barrie	J. Dow/O. Hawkins

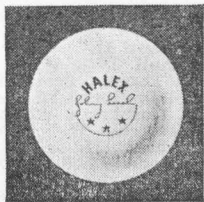


those who play  
to win...

Always choose

**HALEX**

TABLE TENNIS BALLS



## FINAL LEAGUE TABLES 1965/66

### DIVISION I.

	Pld.	Won	Lost	For	Ag.	Pts.
Y.M.C.A. I. ....	24	23	1	164	46	23
Gambit I. ....	24	22	2	198	18	22
Musselburgh C.C. ....	24	17	7	127	89	17
Gambit II. ....	23	15	8	109	96	15
Ferranti I. ....	22	13	9	108	89	13
C.I.S.W.O. I. ....	24	13	11	98	118	13
Athyneum ....	24	12	12	115	100	12
Y.M.C.A. II. ....	24	11	13	90	124	11
Murrayfield Memorial I. ....	23	8	15	90	117	8
Muirhouse C.S. I. ....	22	7	15	77	121	7
Post Office I. ....	24	6	18	68	146	6
Allan Street I. ....	24	4	20	71	145	4
University I. ....	24	2	22	54	160	2

### DIVISION II.

	Pld.	Won	Lost	For	Ag.	Pts.
Register House I. ....	22	21	1	168	30	21
Murrayfield Memorial II. ....	22	19	3	148	50	19
U.G.B.W. I. ....	22	15	7	128	70	15
MacTaggart Scott I. ....	22	15	7	110	88	15
C.I.S.W.O. II. ....	22	12	10	112	86	12
City Police I. ....	22	9	13	88	110	9
Gambit III. ....	22	9	13	77	121	9
Y.M.C.A. III. ....	22	8	14	87	111	8
Murrayfield Memorial III. ....	22	7	15	76	122	7
Civil Service I. ....	22	6	16	69	129	6
Maccabi I. ....	22	6	16	58	140	6
Allan Street II. ....	22	5	17	67	131	5

### DIVISION III.

	Pld.	Won	Lost	For	Ag.	Pts.
MacTaggart Scott II. ....	22	18	4	143	55	18
Wilkie House I. ....	22	17	5	139	59	17
Merchiston Olympians I. ....	22	15	7	126	71	15
City Police II. ....	22	15	7	124	74	15
Post Office II. ....	22	15	7	115	83	15
Civil Service II. ....	22	13	9	107	91	13
Beechwood ....	22	8	14	90	108	8
Muirhouse C.S. II. ....	22	7	15	81	117	7
Allan Street IV. ....	22	7	15	78	120	7
Murrayfield Memorial IV. ....	22	7	15	65	132	7
Maccabi II. ....	22	6	16	68	130	6
Lockharton I. ....	22	4	18	51	147	4

### DIVISION IV.

	Pld.	Won	Lost	For	Ag.	Pts.
Ferranti II. ....	20	20	0	154	26	20
Gambit IV. ....	20	16	4	133	47	16
MacTaggart Scott III. ....	20	15	5	118	62	15
Wilkie House II. ....	20	11	9	83	97	11
St. Cuthbert's Welfare ....	20	10	10	97	83	10
University II. ....	19	10	9	79	92	10
Maccabi III. ....	20	8	12	82	98	8
Portobello S.S. School ....	19	7	12	70	100	7
Civil Service IV. ....	18	5	13	51	111	5
Murrayfield Memorial V. ....	20	4	16	59	120	4
Murrayfield Memorial VI. ....	20	2	18	45	135	2

### DIVISION V.

	Pld.	Won	Lost	For	Ag.	Pts.
Merchiston Olympians II. ....	20	20	0	165	15	20
Muirhouse C.S. III. ....	19	16	3	122	49	16
MacTaggart Scott IV. ....	20	14	6	122	58	14
Register House II. ....	20	12	8	103	77	12
Ferranti III. ....	20	12	8	84	95	12
University III. ....	20	11	9	99	81	11
Thistle Foundation ....	20	10	10	90	89	10
Rover Scouts ....	20	5	15	61	119	5
Boys' Brigade ....	20	5	15	56	122	5
Murrayfield Memorial VII. ....	20	2	18	41	139	2
Civil Service V ....	19	2	17	36	135	2

### DIVISION VI.

	Pld.	Won	Lost	For	Ag.	Pts.
Royston Boys' Club I. ....	22	21	1	165	33	21
Royston Boys' Club II. ....	22	19	3	157	41	19
Merchiston Olympians IV. ....	22	16	6	138	60	16
Merchiston Olympians III. ....	22	15	7	132	66	15
Muirhouse C.S. IV. ....	22	15	7	129	69	15
E.C.T. I. ....	22	12	10	109	89	12
Post Office III. ....	22	10	12	99	99	10
MacTaggart Scott V. ....	22	10	12	88	108	10
H.M. Prison ....	22	5	17	63	135	5
U.G.B.W. II. ....	22	5	17	50	148	5
MacTaggart Scott VI. ....	22	2	20	36	159	2
Leith Boys' Brigade ....	22	2	20	19	178	2

## TOURNAMENT CALENDAR 1966/67

EVENT	VENUE	DATE
		1966
Central Scotland Open	Falkirk	Sun. 16th Oct.
North of Scotland Open	Aberdeen	Sat. 29th Oct.
Midlands of Scotland Open	Dundee	Sat. 12th Nov.
Edinburgh Confined	Edinburgh	Sat. 26th Nov.
East of Scotland Open	Edinburgh	Sun. 27th Nov.
Scottish Closed	Glasgow	Sat/Sun 10th/11th Dec.
		1967
Edinburgh Open	Edinburgh	Sun. 15th Jan.
West of Scotland Open	Glasgow	Sat. 28th Jan.
Quadrangular Internationals	England	Fri/Sat 10th/11th Feb.
Dunfermline Open	Dunfermline	Sun. 19th Feb.
Scottish Open	Edinburgh	Sat/Sun 18th/19th Mar.
World Championships	Stockholm	11th - 21st Apr.

# THE LAWS OF TABLE TENNIS

## SINGLES

1. **The Table.**—The table shall be in surface rectangular, 274 cm. (9 ft.) in length, 152.5 cm. (5 ft.) in width; it shall be supported in such a way that its upper surface shall be 76 cm. (2 ft. 6 in.) above the floor, and shall lie in a horizontal plane.

It shall be made of any material and shall yield a uniform bounce of not less than 20 cm. (8 in.) and not more than 23 cm. (9 in.) when a standard ball is dropped from a height of 30.5 cm. (12 in.) above its surface.

The upper surface of the table shall be termed the "playing surface", it shall be matt, of a dark colour with a white line 2 cm. ( $\frac{3}{4}$  in.) broad along each edge.

The lines at the 152.5 cm. edges or ends of the playing surface shall be termed "end lines". The lines at the 274 cm. edges or sides of the playing surface shall be termed "side lines".

2. **The Net and its Supports.**—The playing surface shall be divided into two courts of equal size by a net running parallel to the end lines and 137 cm. (4 ft. 6 in.) from each. The net, with its suspension, shall be 183 cm. (6 ft.) in length; its upper part along its whole length shall be 15.25 cm. (6 in.) above the playing surface; its lower part along the whole length shall be close to the playing surface. The net shall be suspended by a cord and attached at each end to an upright post 15.25 cm. (6 in.) high; the outside limits of each post shall be 15.25 cm. (6 in.) outside the side line on the same side.

3. **The Ball.**—The ball shall be spherical. It shall be made of celluloid, white and matt; it shall not be less than 11.43 cm. ( $4\frac{1}{2}$  in.) nor more than 12.06 cm. ( $4\frac{3}{4}$  in.) in circumference; it shall not be less than 2.40 gm. (37 grains) nor more than 2.53 gm. (39 grains) in weight.

4. **The Racket.**—The racket may be of any size, shape or weight. Its surface shall be dark coloured, and matt. The blade shall be of wood, continuous, of even thickness, flat and rigid. If the blade is covered on either side, this covering may be either (a) of plain, ordinary pimped rubber, with pimples outward, of a total thickness of not more than 2 mm.; or (b) of "sandwich", consisting of a layer of cellular rubber surfaced by plain, ordinary pimped rubber—turned outwards or inwards—



5/2/12  
in which case the total thickness of covering of either side shall not be more than 4 mm.

**Definition:**—For the purpose of Law 4, plain ordinary pimped rubber shall be defined as follows: A single covering with pimples evenly distributed not fewer than 10 nor more than 50 to the square centimetre (60-330 to the square inch) on rubber which, whether natural or synthetic, is non-cellular, and of which the total thickness includes the height of the pimples and adhesion.

For the purpose of Law 4, note the following: The part of the blade nearest the handle and gripped by the fingers may be covered with cork or other material for convenience of grip: it is to be regarded as part of the handle.

**5. The Scoring of Points.**—A game shall be won by the player who first wins 21 points, unless both players shall have scored 20 points, when the winner of the game shall be he who first wins two points more than his opponent.

**6. The Choice of Ends and Service.**—The choice of ends and the right to be server or receiver in every match shall be decided by toss, provided that, if the winner of the toss choose the right to be server or receiver, the other player shall have the choice of ends, and vice-versa, and provided that the winner of the toss may, if he prefers it, require the other player to make the first choice.

**7. The Change of Ends and Service.**—After five points the receiver shall become the server, and the server the receiver, and so on after each five points until the end of the game or the score 20-all. At the score 20-all, the receiver shall become the server, and the server the receiver, and so on after each point until the end of the game. The player who served first in a game shall be the receiver first in the immediately subsequent game, and so on until the end of the match.

The player who started at one end in a game shall start at the other in the immediately subsequent game and so on until the end of the match. Where the match consists of only one game or, where it consists of more than one game, in the deciding game of the match, the players shall change ends at the score 10.

**8. Out of Order of Ends or Service.**—If a player serves out of his turn, play shall be interrupted as soon as the mistake is discovered and shall continue with that player serving who, according to the sequence established at the beginning of the game, should have been the server at the score which has been reached. In any circumstances, all points scored before the discovery shall be reckoned.

If the players shall not have changed ends when ends should have been changed, the players shall change ends as soon as the mistake is discovered, unless a game shall have been completed since the error, when the error shall be ignored. In any circumstances, all points scored before the discovery shall be reckoned.

9. **The Order of Play.**—The server shall first make a good service, the receiver shall then make a good return, and thereafter server and receiver shall each alternately make a good return.

10. **A Good Service.**—The service shall begin by the server projecting the ball by hand only, without imparting of spin, up into the air. The ball shall then be struck so that it touch first the server's court and then, passing directly over or around the net, touch the receiver's court.

The free hand, while in contact with the ball in service, shall be open, with the fingers together, thumb free and the ball resting on the palm without being cupped or pinched in any way by the fingers.

At the moment of impact of the racket on the ball in service, the latter shall be behind the end line of the server's court and between an imaginary continuation of the side lines.

11. **A Good Return.**—A ball having been served or returned in play shall be struck by the player so that it pass directly over the net or around the net and touch directly the opponent's court; provided that, if the ball, having been served or returned in play, returns with its own impetus over the net or around the net, it may be struck, while still in play, by the player so that it touch directly the opponent's court.

12. **A Let.**—The rally is a let:—

(a) If the ball served in passing over the net touch it or its supports, provided the service be otherwise good or be volleyed by the receiver.

(b) If a service be delivered when the receiver be not ready, provided always that he may not be deemed to be unready if he attempt to strike at the ball.

(c) If either player be prevented by an accident, not under his control, from serving a good service or making a good return.

(d) If either player lose the point, as provided in Law 13 (c), (d), (e), or Law 14 owing to an accident not within his control.

(e) If it be interrupted as provided in Law 8.

13. **A Point.**—Either player shall lose a point:—

(a) If he fail to make a good service, except as provided in Law 12.

(b) If a good service or a good return having been made by his opponent, he fail to make a good return, except as provided in Law 12.

(c) If he, or his racket, or anything he wears or carries, touch the net or its supports while the ball is in play.

(d) If he, or his racket, or anything he wears or carries, move the playing surface while the ball is in play.

(e) If his free hand touch the playing surface while the ball is in play.

14. **A Point.**—Either player shall lose the point:—

(a) If, before the ball in play, in leaving the space above the table, shall have passed over the end lines or side lines not yet having touched the playing surface on his side of the table since being struck by his opponent, it come in contact with him or anything he wears or carries.

(b) If at any time he volley the ball, except as provided in Law 12 (a).

15. **In Play.**—The ball is in play from the moment at which it is projected from the hand in service until:—

(a) It has touched one court twice consecutively.

(b) It has, except in service, touched each court alternately without having been struck by the racket intermediately.

(c) It has been struck by either player more than once consecutively.

(d) It has touched any player or anything that he wears or carries, except his racket or his racket hand below the wrist.

(e) On the volley it come into contact with the racket or the racket hand below the wrist.

(f) It has touched any object other than the net, supports, or those referred to above.

(g) In service it has toched the server's left half-court or the receiver's left half-court.

16. **Further Definitions.**—The period during which the ball is in play shall be termed a rally.

A rally the result of which is scored shall be termed a point.

A rally the result of which is not scored shall be termed a let.

The player who first strikes the ball during a rally shall be termed the server.

The player who next strikes the ball during a rally shall be termed the receiver.

If the ball in passing over the net, or around the net, touch it or its supports, it shall, nevertheless, be considered to have passed directly, except as referred to in Law 12 (a).

“Around the net” shall be considered as including “under or around the projection of the nets and supports outside the side line”.

If the ball in play come into contact with the racket or racket hand, not yet having touched the playing surface on one side of the net since last being struck on the other side, it shall be said to have been volleyed.

The racket hand is the hand carrying the racket; the free open hand is the hand not carrying the racket.

## DOUBLES

17. The above Laws shall apply in the Doubles Game except as below.

18. **The Table.**—The surface of the table shall be divided into two parts by a white line 3mm. ( $\frac{1}{8}$  in.) broad, running parallel with the side lines and distant equally from each of them. This line shall be termed the centre line.

The part of the table surface on the nearer side of the net and the right of the centre line in respect to the server, shall be called the server's right half-court, that on the left in respect to him, the server's left half-court. The part of the table surface on the farther side of the net, and the left of the centre line in respect to the server, shall be called the receiver's left half-court.

19. **A Good Service.**—The service shall be delivered as otherwise provided in Law 10, and so that it touch first the server's right half-court or the centre line on his side of the net, and then passing directly over or around the net, touch the receiver's right half-court or the centre line on his side of the net.

20. **The Choice of Order of Play.**—The pair who have the right to serve the first five services in any game shall decide which partner shall do so, and the opposing pair shall then decide similarly which shall first be receiver.

21. **The Order of Service.**—The first five services shall be delivered by the selected partner of the pair who have the right to do so and shall be received by the selected partner of the opposing pair. The second five services shall be delivered by the receiver of the first five services and received by the partner of the server of the first five services. The fifth five services shall be delivered by the partner of the server of the first five services and received by the partner of the receiver of the first five services. The fourth five services shall be delivered by the partner of the receiver of the first five services and received by the server of the first five services. The fifth five services shall be delivered as the first five services. And so on, in sequence, until the end of the game or the score 20-all, when the sequence of serving and receiving shall be uninterrupted, but each player shall serve only one service in turn until the end of the game.

In a one-game match, or in the deciding game of a match of more than one game, the pair that served the first five services has the right to alter their order of receiving or that of their opponents at the score 10.

22. **Out of Order of Receiving.**—If a player act as receiver out of his turn, play shall be interrupted as soon as the mistake is discovered and shall continue with that player receiving who, according to the sequence established at the beginning of the game, or at the score of 10 if that sequence has been changed under Law 21, should be receiver at the score which has been reached. In any circumstances all points scored before the discovery shall be reckoned.

23. **The Order of Play.**—The server shall first make a good service, the receiver shall then make a good return, the partner of the server shall then make a good return, the partner of the receiver shall then make a good return, the server shall then make a good return, and thereafter each player alternately in that sequence shall make a good return.

#### 24. **Further Amendments and Additions.**

Law 6.—Alter “server”, “receiver”, “winner”, “he” to their respective plurals; alter “player” to “pair”.

Law 7.—Delete first two sentences of first paragraph. In the third sentence first paragraph, and in the second paragraph, alter “player” to “pair”; “players” to “pairs”; “receiver” to “receivers”.

Law 8.—Insert “or at the score ten if that sequence has been changed under Law 21” between the words “game” and “should”.

Law 12 (b).—Insert “or his partner” after “receiver”; “they” in place of the first “he”; “the receiver” in place of the second “he”.

Law 12 (c).—Insert “any” in place of “either”.

Law 12 (d).—Insert “pair” in place of “player”; “their” in place of “his”.

Law 12 (e).—Add at end “or Law 22”.

Law 13.—Insert “pair” in place of “player”.

Law 13 (a).—Insert “the server” instead of “he”.

Law 13 (b).—Insert “one of their opponents in proper sequence” in place of “his opponent”; “they” in place of “he”.

Law 13 (c).—Insert “either partner” in place of the first “he”.

Law 13 (d).—Insert “either partner” in place of the first “he”.

Law 13 (e).—Insert “of either partner” after “hand” and “the” in place of “his”.

Law 14.—Insert “pair” instead of “player”.

Law 14 (a).—Insert “their” in place of the first “his”; “one of their opponents in proper sequence” instead of “his opponent”; “either partner” instead of “him”.

Law 14 (b).—Insert “either partner” in place of “he”.

Law 15 (c).—Insert “any” in place of “either”; add “or by any player out of proper sequence except as provided in Law 22”.

Law 15 (d).—Insert “any” in place of “either”.

Add as Law 15 (g).—“In service it has touched the server's left half-court or the receiver's left half-court.”

## LAWS OF THE GAME

**Law 10. A Good Service.**—For an experimental period of two years, commencing 2nd July, 1965, in Singles and in Doubles the ball in service can be struck outside the imaginary continuation of the side lines.

**Law 21. The Order of Service (Doubles).**—For an experimental period of two years the order of serving and strike out shall follow a set pattern throughout each match. To give effect to this, the second paragraph of Law 21 is deleted and substituted by the following:—

"In the second game, the player who received first in the preceding game shall be the first server, and the player who served first in the preceding game shall be the first receiver. In the third game the order of serving and receiving shall be the same as in the first game, and in the fourth game the same as in the second game, and so on until the deciding game of the match, when the order shall change according to the same sequence at the change of ends."

In Para. 2 delete "The First Five Services" and substitute "First in the match".

In Para. 2 delete "At the score 10" and substitute "At the change of ends."

The International Table Tennis Federation have circulated all member countries with the following notice relating to the service rule:

"Service. It has become more and more evident that Umpires are finding it difficult to interpret the law and to decide whether or not certain serves are legal.

The Rules Committee has, therefore, proposed and the Advisory Committee has agreed, to recommend experimental rules as per the following appendix.

All Associations are recommended to try out these rules to see if an advantage can still be provided to the server within the Rules, and that the Umpires will have a fair chance to judge the legality of the serves.

It should be noted that should these experiments prove satisfactory a modification may be adopted to operate in the 1967 World Championships."

### Appendix—The Service Rule.

Proposals:—

1. "The hand projecting the ball must always be visible to the Umpire and to the opponent, and, for this purpose, must always be at least at the level of the top surface of the table and behind the end line or an imaginary extension thereof."
2. "The hand must project the ball upwards to as nearly as possible the level of the shoulder of the server when he is standing."

3. "The hand must project the ball into the air as nearly vertical as possible. The ball should be clearly visible in the palm of the hand."
4. "To the requirements of proposal No. 2 above, add—"The hand which projects the ball and the racket hand must not move in opposite directions during service.""

The above experimental Rules are to be incorporated in and form part of the Laws of the Game under which all matches and tournaments will be played.

## Attention

*All players should read  
carefully the Experimental  
Laws on page 20.*

*Attention is also drawn to  
New Rules 7 and 9(c) of  
our own league.*

# More than bats and nets

*Lillywhites range of table tennis equipment and clothing is second to none. We have a superb selection of bats, balls, tables and even the new "Stiga" Table Tennis Practice machine.*

*Visit our shop in Princes Street and see for yourself? Or write for our Winter Equipment Catalogue.*

*Other catalogues are available featuring Underwater and Water Ski-ing, Archery, Golf, Ski-ing, All free on request.*

## Lillywhites

129 PRINCES STREET, EDINBURGH.

Tel.: CALedonian 5831.



## APPENDIX TO LAWS—KNOTTY POINTS

(Decisions of I.T.T.F. Rules Committee)

1. **Edge Balls.**—The phrase "Table Surface" is to be interpreted as including the top edges and corners of the table top, and a ball in play which strikes these latter is therefore good and still in play; though if it strikes evidently the side of the table-top below the edge it becomes dead and counts against the last striker.

2. **Ball Returned with Empty Hand.**—If a player drop his racket, he cannot return the ball with the empty hand. (See definition, the racket hand is the hand carrying the racket.)

3. **Racket Thrown at Ball.**—If, in returning the ball, the racket leave the player's hand, it is a good return only if it were still in his hand at the moment of contact with the ball (see Law 11, a ball . . . shall be struck) and if it do not touch the net or move the table surface (Law 13(c), (d), before the ball is out of play).

4. **Missed Service.**—If a player, in attempting to serve, miss the ball altogether, it is a lost point (Law 10 and 15), because the ball was in play from the moment it left the server's hand, and a good service has not been made of the ball already in play.

5. **Volleyed Net Service.**—A net service is a let not only if otherwise good, but also if it be volleyed by the receiver. (See Laws 12(a) and 14(b)).

6. **"Open Hand" in Service—Physical Disability.**—Strict observation of the prescribed method of service may be waived where the umpire is notified, before play begins, that compliance by the player in question is prevented by physical disability.

7. **Ball Fractured in Play.**—If the ball split or become otherwise fractured in play, affecting a player's return, the rally is a let (Law 12(c)). It is the umpire's duty to stop play, recording a let, when he has reason to believe that the ball in play is fractured or imperfect: and to decide those cases in which the faulty ball is clearly fractured in actually going out of play, and in no way handicaps the player's return, when the point should be scored. In all cases of doubt, however, he should declare a let.

8. **Fixtures.**—A moving spectator, a neighbouring player, a sudden noise, i.e., any neighbouring object in movement (except a partner) should be regarded as an accident not under control (Law 12(c)), interference from which implies a let. A stationary spectator, fixed seating, the umpire, the light, a nearby table, a continuous sound of even volume, i.e. any relatively constant or motionless hazard, should not be so regarded, and complaint against interference from it during play should be regarded as void.

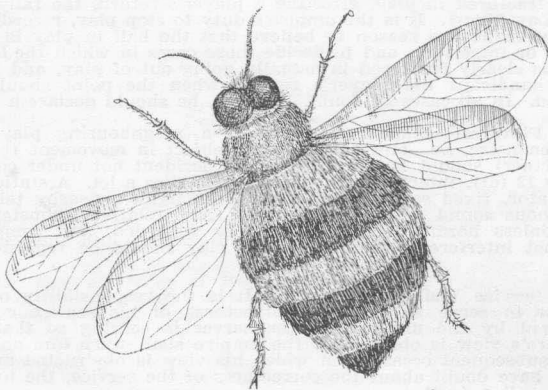
9. **Service Visible to Umpire.**—It is the responsibility of the server to serve so that the correctness of his service can be checked by the umpire. If the server is serving so that the umpire's view is obstructed, the umpire shall warn him and, on any subsequent occasion on which his view is obstructed and he may have doubt about the correctness of the service, the umpire shall call a fault.

# BEE

## IS FOR BANKING

Long ago, frugal folk in the remote Scottish islands used to catch the first bee of spring and place it inside their purse as a safeguard against the temptation of spending. Nowadays the Royal Bank of Scotland offers a much less painful, less energetic way of looking after money—in the islands and at over 250 branches in Scotland and in London.

**THE**  
**ROYAL BANK**  
**OF SCOTLAND**



## FIXTURE LIST 249      42

Commencing Week	A	B	C	D	E	F	G	H	I	J	K	L	M	N
SEPT. 26	N	Ca	B	Ea	D	Ga	F	Ia	H	Ka	J	Ma	L	Aa
OCT. 3	C	E	Aa	G	Ba	I	Da	K	Fa	M	Ha	Na	Ja	L
" 10	Ea	Ga	N	Ia	A	Ka	B	Ma	D	La	F	J	H	Ca
" 17	G	I	E	K	Ca	M	Aa	L	Ba	Na	Da	Ha	Fa	J
" 24	Ia	Ka	Ga	Ma	N	La	C	Ja	A	H	B	F	D	Ea
" 31	K	M	I	L	G	J	Ea	Na	Ca	Fa	Aa	Da	Ba	H
NOV. 7	Ma	La	Ka	Ja	Ia	Ha	N	F	E	D	C	B	A	Ga
" 14	L	J	M	H	K	Na	I	Da	Ga	Ba	Ea	Aa	Ca	F
" 21	Ja	Ha	La	Fa	Ma	D	Ka	B	N	A	G	C	E	Ia
" 28	H	F	J	Na	L	Ba	M	Aa	K	Ca	Ia	Ea	Ga	D
DEC. 5	Fa	Da	Ha	B	Ja	A	La	C	Ma	E	N	G	I	Ka
" 12	Da	N	Fa	A	Ha	C	Ja	E	La	G	Ma	I	K	Ba
1967														
JAN. 9	B	Aa	D	Ca	F	Ea	H	Ga	J	Ia	L	Ka	N	Ma
" 16	Na	C	Ba	E	Da	G	Fa	I	Ha	K	Ja	M	La	A
" 23	Ca	Ea	A	Ga	B	Ia	D	Ka	F	Ma	H	N	J	La
" 30	E	G	Na	I	Aa	K	Ba	M	Da	L	Fa	Ja	Ha	C
FEB. 6	Ga	Ia	Ea	Ka	C	Ma	A	La	B	N	D	H	F	Ja
" 13	I	K	G	M	Na	L	Ca	J	Aa	Ha	Ba	Fa	Da	E
" 20	Ka	Ma	Ia	La	Ga	Ja	E	N	C	F	A	D	B	Ha
" 27	M	L	K	J	I	H	Na	Fa	Ea	Da	Ca	Ba	Aa	G
MAR. 6	La	Ja	Ma	Ha	Ka	N	Ia	D	G	B	E	A	C	Fa
" 13	J	<del>IN</del> L	F	M	Da	K	Ba	Na	Aa	Ga	Ca	Ea	I	
" 20	Ha	Fa	Ja	<u>N</u>	La	B	Ma	A	Ka	C	I	E	G	Da
" 27	F	D	H	Ba	J	Aa	L	Ca	M	Ea	Na	Ga	Ia	K
APR. 3	D	Na	F	Aa	H	Ca	J	Ea	L	Ga	M	Ia	Ka	B
" 10	Ba	A	Da	C	Fa	E	Ha	G	Ja	I	La	K	Na	M

### Instructions on the Use of the above Tables

Ascertain Code Letter of Team. Look under appropriate Letter in the Fixture Table, against the desired date, and the resulting Capital Letter is the Code Letter of your opponents. If the Capital Letter is followed by a Small "a" then your team is away from home.

ALL MATCH RESULTS CARDS TO BE SENT TO:—

MATCH SECRETARY—W. LINCOLN, Esq.,  
22, FALCOLN COURT,  
EDINBURGH, 10.

# SEASON 1966/67 LEAGUES

## Code Letters — Home Nights

Code	DIVISION I	Home Night	Code	DIVISION II	Home Night
A	Athyneum	Wed	A	MacTaggart Scott I	Tues ✓
B	C.I.S.W.O. I	Tues	E	Murr. Mem. III	Thur ✓
C	Ferranti I	Tues ✓	C	Post Office II	Tues
D	Gambit I	Tues	D	Gambit III	Wed
E	Muirhouse I	Tues ✓	E	Civil Service I	Tues ✓
F	Murr. Mem. I	Frid	F	Police I	Mon
14 G	Murr. Mem. II	Frid	G	Police II	Tues ✓
H	Musselburgh	Wed	H	Maccabi I	Wed
I	Gambit II	Tues	I	North Merch. I	Wed
J	Post Office I	Mon	J	Wilkie House I	Mon
K	Reg. House I	Wed	K	C.I.S.W.O. II	Tues ✓
L	U.G.B.W. I	Mon	L	MacTaggart Scott II	Tues ✓
M	Y.M.C.A. I	<del>TUES</del> <del>THUR</del>	M	University I	2.00 Tues ✓
N	Y.M.C.A. II	<del>TUES</del> <del>THUR</del>	N	Y.M.C.A. III	<del>TUES</del> THURS ✓

### DIVISION III

### DIVISION IV

March 5 <sup>th</sup> A	Beechwood	Tues	A	Boys' Brigade	Wed
B	MacTaggart Scott III	Wed	B	Reg. House II	Tues
March 10 <sup>th</sup> C	North Merch. II	Wed	C	Rover Scouts	Tues
March 17 <sup>th</sup> D	Wilkie House II	Tues	D	Lockharton	Frid
Respon March 1 <sup>st</sup> E	Maccabi II	Tues	E	Maccabi III	Thur
F	Port. Sec. School 2.15	Thur	F	Civil Service III	Mon
G	St. Cuthbert's	Mon	G	Murr. Mem. V	Wed
H	Muirhouse II	Thur	H	Muirhouse III	Tues
I	Murr. Mem. IV	Tues	I	Royston B.C. I	Thur
J	Ferranti II	Tues	J	Ferranti III	Tues
K	Gambit IV	Frid	K	MacTaggart Scott IV	Wed
L	Civil Service II	Thur	L	Thistle Found.	Thur
M	Port. Rail Club	Thur	M	Allan St.	Thur
N	University II 2.00	Frid	N	University III	Tues

### DIVISION V

### DIVISION VI

A	U.G.B.W. II	Wed	A	J. Brown & Co. II	WED out
B	Bonnyrigg B.C. I	Frid	B	Gambit V	Frid
C	Duncan I	Tues	C	Police IV	Thur
D	Royston B.C. II	Thur	D	E.C.T. II	Tues
E	Muirhouse IV	Thur	E	Central Y.C.	Mon
F	Murr. Mem. VI	Mon	F	Leith B.B.	Wed
G	*H.M. Prison	Thur	G	Duncan II	Frid
H	MacTaggart Scott V	Thur	H	Maccabi IV	Mon
I	E.C.T. I	Mon	I	Bonnyrigg B.C. II	Tues
J	Post Office III	Tues	J	North Merch. V	Wed
K	Police III	Wed	K	Murr. Mem. VII	Thur
L	J. Brown & Co. I	Mon	L	Royston B.C. III	Thur
M	North Merch. III	Thur	M	St. Matthew's Y.F.	Thur
N	North Merch. IV	Thur	N	Port. Rail Club	Thur

\* All Home Matches.

# EDINBURGH CUP KNOCK-OUT HANDICAP COMPETITION

## CLOSING DATE FOR ENTRY—FRIDAY 21st OCTOBER

The Committee have decided that a draw should be made for the Handicap Cup preliminary and first rounds before the season begins. This means that **ALL** teams registered, with the exception of those disqualified under Rule 13, have been included in the draw.

The fee for the competition is 2/6 per team, and secretaries are asked to pay the fees to Mr G. E. Brewerton as soon as possible, and in any case before the closing date (see above).

The rule which has been introduced in the league this season that players must be registered in playing strength, does **NOT** apply, but a list showing players to be registered for each individual team must be submitted to Mr Brewerton for Handicapping purposes before the closing date.

Handicaps will be notified to club secretaries as soon as possible.

All teams of any club which has not paid the required fee and notified its intended playing strength by the closing date, **will be scratched**, but the Committee earnestly desire to extend the popularity of this competition and suggest that secretaries should co-operate, to play this competition as far as possible as set out in the draw shown below.

If despite this, a club wishes not to enter all its teams, the lowest team by number (e.g. Muirhouse IV not Muirhouse I) will be withdraw from the competition.

If a Club wishes to enter more teams in the cup than in the league, this will be permitted, provided that Mr Brewerton is notified before the closing date.

# EDINBURGH CUP KNOCK-OUT HANDICAP COMPETITION

## GENERAL RULES.

1. Players must be registered in accordance with League Rules.
2. A player may only play for **one** team throughout the competition.
3. A player not on the handicap list shall play off **-12** until the competition Committee can assess his/her standard.
4. The competition Committee may revise handicaps where deemed necessary.
5. Teams shall consist of three players.
6. A match shall consist of 9 best of three set games.
7. The "Home" Team (as defined on draw sheet) shall offer their opponents **at least** two dates within the allotted period, giving **at least** four days notice.
8. The visiting team shall be deemed to have defaulted should they not accept one of the dates offered.
9. Matches must commence not later than 8 p.m. Players not available for play 30 minutes later than the agreed starting time shall forfeit their games.
10. A score card (showing **actual** scores) should be forwarded to G. E. Brewerton, Esq., 5 Muirwood Drive, Currie, Midlothian, immediately following the tie. Should the result of any tie not be received by Mr Brewerton within 48 hours of the closing date of the respective round, the offending team will be scratched and their next round opponents awarded a byc.
11. Any dispute shall be submitted, in writing, to Mr Brewerton to be considered by the Competition Committee whose decision shall be final.
12. When a third set is necessary, ends will be changed in the third set when either player has scored half the points necessary for him (or her) to win the set.  
e.g. **-8** plays **+8**  
**+8** plays of 16 to 29 and **-8** plays of scratch.  
Players will change ends when either  
(a) **+8** reaches 22 or  
(b) **-8** reaches 14
13. Players in teams eligible for the Scottish Cup are not eligible for the Edinburgh Handicap Cup.

**Note.**—It will expedite the running of the competition if team Secretaries make provisional arrangements with both their possible next round opponents should his team be successful in their current tie.

# EDINBURGH KNOCK-OUT HANDICAP CUP

## PRELIMINARY ROUND

### TO BE PLAYED BY 18th NOVEMBER

Musselburgh C.C.	v	Maccabi IV	Ferranti III	v	U.G.B.W. I
C.S.W.O. II	v	E.T.C. II	<del>Gambit IV</del>	v	Police IV *
Beechwood	v	Edin. B.B.	Post Office I	v	Muirhouse IV
North Mer. IV	v	Royston B.C. II	Maccabi II	v	University III
Royson B.C. III	v	Ferranti II	Ferranti I	v	St. Cuthbert's
Murrayfield I	v	Leith B.B.	MacTag. Scott V	v	North Mer. II
Murrayfield II	v	Royston B.C. I	Police II	v	MacTag. Scott II
Register Ho. I	v	North Mer. V	Port. Sen. Sch.	v	E.C.T. I
University II	v	Civil Service II	Gambit II	v	Police I *

## ROUND 1

### TO BE PLAYED BY 31st DECEMBER

Post Office II	v	Maccabi III	Lockharton	v	Beechwood or Edin. B.B.
University I	v	Maccabi I	Murrayfield VII	v	Porto. Rly. I
North Mer. IV or Royston B.C. II	v	C.I.S.W.O. II or E.C.T. II	* Gambit III	v	<del>Ferranti III or U.G.B.W. I</del>
<del>Gambit IV</del>	v	Wilkie Ho. I	H.M. Prison	v	MacTag. Scott V or North Mer. II
Porto. Rly. II	v	Murrayfield II or Royston I	MacTag. Scott I	v	Y.M.C.A. II
Muirhouse III	v	Rover Scouts	Bonnyrigg II	v	Register Ho. II
Bonnyrigg I	v	Thistle Foundn.	Murrayfield V	v	Y.M.C.A. III
Port. Sen. Sch. or E.C.T. I	v	J. Brown I	Muirhouse II	v	Ferranti I or St. Cuthbert's
Murrayfield I or Leith B.B.	v	Post Office I or Muirhouse IV	<del>Gambit V</del> or Police IV	v	University II or Civil Service II
North Mer. III	v	Civil Service III	Police II or MacTag. Scott II	v	Musselburgh or Maccabi IV
Royson B.C. III or Ferranti II	v	North Mer. I	Murrayfield VI	v	<del>Police I or Gambit II</del>
Allan Street	v	Wilkie Ho. II	MacTag. Scott IV	v	Police III
Register Ho. I or North Mer. V	v	Duncan II	J. Brown II	v	MacTag. Scott III
Civil Service I	v	Murrayfield IV	Duncan I	v	Athyneum
Maccabi II or University III	v	Cent. Hall Meth.	Post Office III	v	Muirhouse I
Murrayfield III	v	C.I.S.W.O. I	U.G.B.W. II	v	St. Matt's Y.F.

# SEASON 1965/66 INDIVIDUAL POSITIONS

## DIVISION I

	Games	
	For	Ag.
R. Kerr (Gambit)	66	3
G. Fraser (Gambit)	63	6
C. Vesco (Y.M.C.A.)	62	4
T. McMichael (Gambit)	53	4
W. Gibbs (Y.M.C.A.)	53	7
C. Fuller (Athyneum)	47	19
A. Penman (Musselburgh)	46	23
E. Sutherland (Gambit)	45	18
G. Brewerton (Muir, C.S.)	43	20
D. McMichael (Athyneum)	43	26
R. McLeod (Gambit)	39	9
R. Rutherford (M'burgh)	39	21
I. Wilson (C.I.S.W.O.)	39	30

## DIVISION II

	Games	
	For	Ag.
I. Donald (U.G.B.W.)	60	6
J. Haldane (Reg. House)	59	7
A. B. Farmer (Reg. Ho.)	54	12
F. G. Skea (Reg. House)	53	10
J. Finlay (Murr. Mem.)	52	5
A. Nicholls (City Police)	50	4
G. H. Smith (Murr. Mem.)	47	19
J. Dempster (MacT. Scott)	39	27
G. Maitland (C.I.S.W.O.)	38	19
D. Osprey (Gambit)	38	22
J. Bogie (C.I.S.W.O.)	37	20
H. Gordon (U.G.B.W.)	37	29

## DIVISION III

	Games	
	For	Ag.
J. Frame (Civil Service)	54	6
W. Lincoln (MacT. Scott)	52	14
J. Dawson (MacT. Scott)	51	15
J. Lynn (Wilkie Ho.)	50	16
W. Sangster (City Police)	45	15
R. Haggarty (Wilkie Ho.)	45	18
A. Stout (City Police)	43	14
J. Lee (Wilkie Ho.)	43	23
A. McEwan (Post Office)	42	6
A. Middlemiss (Mer. Oly.)	41	16
D. Wilkinson (Allan St.)	40	23
Miss E. Ferrigan (P.O.)	39	27

## DIVISION IV

	Games	
	For	Ag.
J. Jack (Gambit)	55	2
G. McKerchar (Ferranti)	56	4
J. Kelman (Ferranti)	53	7
E. Ferrier (Ferranti)	45	15
F. Shanley (Porto, Sch.)	40	17
Mrs M. Pretzel (Gambit)	40	20
B. Millar (MacT. Scott)	38	19
T. Sutherland (St. Cuth.)	37	20
A. McKay (Wilkie Ho.)	35	19
J. Nixon (Murr. Mem.)	34	20
Mrs J. McKenzie (Gambit)	33	18

## DIVISION V

	Games	
	For	Ag.
A. McKean (Mer. Oly.)	60	0
M. Larter (Mem. Oly.)	47	7
I. Gibson (Thistle F.)	46	8
E. Harris (Mer. Oly.)	45	6
J. Tully (Reg. Ho.)	41	16
C. Bennett (MacT. Scott)	37	23
J. McCathie (Muir, C.S.)	34	14
E. Wilson (Ferranti)	33	21
W. Metcalfe (MacT. Scott)	31	5
W. Prentice (Ferranti)	31	26
J. Alcock (University)	29	19

## DIVISION VI

	Games	
	For	Ag.
J. Gladstone (Roystn B.C.)	54	6
W. Addison (Roy'n B.C.)	55	8
S. Moodie (Mer. Oly.)	49	17
D. Irwin (Muir, C.S.)	48	9
D. Imrie (Royston B.C.)	44	7
E. Henderson (Muir C.S.)	41	13
C. Notman (Roy'n B.C.)	39	6
A. McDonald (Post Office)	39	21
S. Webster (Mer. Oly.)	36	18
J. Carey (Mer. Oly.)	36	21
A. Campbell (Mer. Oly.)	35	19
R. Knox (Mer Oly.)	33	21



## CLUBS IN MEMBERSHIP

### ALLAN ST. CLUB

CLUB ADDRESS—  
SECRETARY—  
DIRECTIONS—

### ATHYNEUM T.T. CLUB

CLUB ADDRESS—Wm. Thyne Ltd, Langmuir Works Canteen,  
Sighthill Estate, Edinburgh, 11.  
SECRETARY—W. Wells, Esq., c/o Wm. Thyne Ltd. Tel.: CRA  
4441 (Bus).  
DIRECTIONS—Bus Nos. 22 or 34 to Terminus at Sighthill, Club  
facing bus stop.

### BEECHWOOD T.T. CLUB

CLUB ADDRESS—Beechwood House, 1 Hampton Terrace,  
Edinburgh, 12.  
SECRETARY—E.G. Caw, Esq., 7 Broomhouse Ave., Edinburgh,  
11. Tel.: CRA 1107 (Home).  
DIRECTIONS—Bus Nos. 12, 25, 26, 28 and 31 from Town, second  
stop beyond Haymarket. Walk back 30 yds.—Club on right.

### BONNYRIGG BOYS' CLUB

CLUB ADDRESS—Bonnyrigg Primary School, Polton Street,  
Bonnyrigg.  
SECRETARY—J. Bald, Esq., 24 Eldindean Road, Bonnyrigg.  
Tel.: CAL 1313 (Bus).  
DIRECTIONS—From Edinburgh—Rosewell Bus to Bonnyrigg  
Toll—School 200 yds. past lights on left. From Lasswade—  
Turn right at lights at Bonnyrigg Toll—200 yds. on left.

### J. BROWN & CO. LTD.

CLUB ADDRESS—J. Brown & Co. Ltd., Pavilion, Esk Mills,  
Penicuik.  
SECRETARY—K. Brierley, Esq., Duncan Cottage, 4 Loanburn,  
Penicuik. Tel.: Penicuik 1.  
DIRECTIONS—To Town Centre—Turn left up hill 20 yds. on the  
left passed the cricket ground.

### CIVIL SERVICE T.T. CLUB

CLUB ADDRESS—Civil Service Club, 50 Great King Street,  
Edinburgh, 3.  
SECRETARY—L. Mollison, Esq., 15 Comely Bank Graove,  
Edinburgh, 4. Tel.: DEA 6082 (Home), WAV 2371 (Bus).  
TEAM SECRETARIES—  
1st Team—Club Secretary.  
2nd Team—A. Purves, Esq., 196 Pilton Avenue, Edinburgh, 5.  
Tel.: FOU 2433 Ext. 54 (Bus).  
3rd Team—I. Glynn, Esq., 13 Strathfillan Road, Edinburgh, 9.  
Tel.: MOR 4102 (Home), CAL 6747 (Bus).  
DIRECTIONS—Bus Nos. 23 or 27 down Hanover Street to Gt.  
King Street.

### **C.I.S.W.O.**

CLUB ADDRESS—C.I.S.W.O. T.T. Club, Musselburgh Community Centre, Stoneyhill, Musselburgh.

SECRETARY—I. Wilson, Esq., 2 Carlyle Gardens, Haddington.  
Tel.: GRA 6261 Ext. 215 (Bus).

DIRECTIONS—Take right fork at "Crudens" 2nd opening on right.

### **CENTRAL HALL METHODIST YOUTH CLUB**

CLUB ADDRESS—Central Halls, Tollcross, Edinburgh.

SECRETARY—K. Wishart, Esq., 34 Harrison Gds., Edinburgh,  
11. Tel.: DON 5582 (Home).

DIRECTIONS—Next door to Tollcross Bus Depot.

### **DUNCAN LTD.**

CLUB ADDRESS—W. & M. Duncan Ltd., Beaverhall Road, Edinburgh, 7.

SECRETARY—K. Marlow, Esq., 24/1 Muirhouse Park, Edinburgh,  
4. Tel.: WAV 4433 (Bus).

DIRECTIONS—Bus from Town down Broughton Street to lights at Ritz Cinema—Turn right—Firt on Left.

### **EDINBURGH BOYS' BRIGADE**

CLUB ADDRESS—9th Edinburgh Coy. Boys' Brigade, Moredun School, Edinburgh, 9.

SECRETARY—W. C. Syson, Esq., 304 Gilmerton Rd., Edinburgh,  
9. Tel.: LIB 3857 (Home).

DIRECTIONS—Bus Nos. 3 or 8 to Moredun Park Road—Along Moredun Park Road 2nd on left and 2nd left again.

### **EDINBURGH CITY POLICE**

CLUB ADDRESS—7 Chambers Street, Edinburgh, 1.

SECRETARY—A. Stout, Esq., 5 Torphican Place, Edinburgh.

TEAM SECRETARIES—

1st Team—Club Secretary.

2nd Team—A. Cunningham, Esq., 10 Parker Terr., Edinburgh.  
Tel.: POR 4419 (Home).

3rd Team—P. Hodge, Esq., c/o Dickson, 39 Nantwich Drive,  
Edinburgh, 15.

4th Team—D. Allen, Esq., 30 Alderbank Terr., Edinburgh.  
Tel.: DON 7171 (Home).

DIRECTIONS—Enter by Guthrie Street—30 yds. on right up Chamber Street from Bridges End.

### **EDINBURGH CITY TRANSPORT**

CLUB ADDRESSES—Edinburgh Corporation Transport Welfare Association, Bowling Pavilion, Longstone Depot.

SECRETARY—W. McGinnis, Esq., 26/8 Pennywell Place,  
Muirhouse, Edinburgh, 4.

TEAM SECRETARIES—

1st Team—Club Secretary.

2nd Team—P. Donnachie, Esq., 16 Broomhouse Gardens,  
Edinburgh, 11.

DIRECTIONS—Bus Nos. 3, 22, 33, 34 or 35 to Longstone Depot—Bowling Pavilion in grounds of Depot.

### **EDINBURGH MACCABI**

CLUB ADDRESS—27 Salisbury Road, Edinburgh, 9.

SECRETARY—M. Fisher, Esq., 11 Lutton Place, Edinburgh, 8.  
Tel.: NEW 4368 (Home).

TEAM SECRETARIES—

1st Team—M. Smith, Esq., 31 Alnwickhill Rd., Edinburgh, 9.  
Tel.: LIB 2155 (Home).

2nd Team—M. Adelman, Esq., 12 Arden St., Edinburgh, 9.  
Tel.: FOU 4908 (Home).

3rd Team—Club Secretary.

4th Team—P. Vinestock, Esq., 1 Bruntsfield Gds., Edinburgh,  
10. Tel.: FOU 4831 (Home).

DIRECTIONS—Bus to either Salisbury or top of Dalkeith Road.  
Large house in Salisbury Road opposite Synagogue.

### **EDINBURGH UNIVERSITY**

CLUB ADDRESS—47 Pleasance, Edinburgh, 8.

SECRETARY—J. Alcock, Esq., c/o University Union, Park Place,  
Edinburgh, 8.

DIRECTIONS—From Bridges down Drummond Street, turn right  
at foot—Institute on left.

### **FERRANTI T.T. CLUB**

CLUB ADDRESS—Ferranti T.T. Club, F (E) R.C. Pavilion,  
Crewe Toll, Edinburgh, 5.

SECRETARY—J. Kelman, Esq., 115 Crewe Cres., Edinburgh, 5.  
Tel.: GRA 3834 (Home).

TEAM SECRETARIES—

1st Team—W. Blue, Esq., 53 Redford Loan, Edinburgh, 13.  
Tel.: COL 3984 (Home).

2nd Team—Club Secretary.

3rd Team—W. Prentice, Esq., 14 Broombank Ter., Edinburgh,  
12. Tel.: COR 3799 (Home).

DIRECTIONS—Bus Nos. 1, 17, 19, 27 and 47 to Crewe Toll—  
Pavilion opposite McLeod's Garage.

### **GAMBIT T.T. CLUB**

CLUB ADDRESS—c/o North Merchiston Boys' Club, Watson  
Crescent, Edinburgh, 10.

SECRETARY—Mrs P. Kerr, 46 Barony Terr., Edinburgh, 12.  
Tel.: COR 4444 (Home).

TEAM SECRETARIES—

1st Team—R. Kerr, Esq., 46 Barony Terrace, Edinburgh, 12.  
Tel.: COR 4444 (Home).

2nd Team—E. Sutherland, Esq., 44 Brunstane Crescent, Edin-  
burgh, 15. Tel.: POR 4134 (Home).

3rd Team—Mrs E. Hogg, 15 Riversdale Cres., Edinburgh, 12.  
Tel.: DON 6896 (Home).

4th Team—Mrs M. Pretzel, 41 Hillview Drive, Edinburgh, 12.  
Tel.: COR 1570 (Home).

5th Team—Club Secretary.

DIRECTIONS—Bus Nos. 1, 34 and 35 to Dundee Street—Up  
Fowler Terrace—2nd on right is Watson Crescent.

## H. M. PRISONS

CLUB ADDRESS—H.M. Prison, Saughton, Edinburgh, 11.  
SECRETARY—T. McLaughlan, Esq. (Asst. Govnr.), H.M. Prison,  
Edinburgh, 11. Tel.: CRA 2238.  
DIRECTIONS—Bus Nos. 3 or 33 to Stenhouse Road.

## LEITH BOYS' BRIGADE

CLUB ADDRESS—73 Ferry Road, Edinburgh, 6.  
SECRETARY—T. E. Aitken, Esq., 40 Stapeley Road, Edinburgh,  
7. Tel.: POR 4169 (Home).  
DIRECTIONS—Bus Nos. 1, 7 to Leith Town Hall—A few yds.  
up on other side of road—Opposite St. Ninians Church.

## LOCKHARTON T.T. CLUB

CLUB ADDRESS—Stenhouse and Whitson Community Centre,  
Stevenson Road, Edinburgh, 11.  
SECRETARY—W. Rennie, Esq., 52 Alan Breck Gdns, Edinburgh,  
4. Tel. COR ~~2361~~ (Home). 2576  
DIRECTIONS—Bus Nos. 1, 2 and 22 to Stenhouse Cross.

## McTAGGART, SCOTT & CO. LTD.

CLUB ADDRESS—MacTaggart, Scott & Co. Ltd., Loanhead.  
SECRETARY—W. Steel, Esq., 13 Laurel Bank, Dalkeith.  
TEAM SECRETARIES—  
1st Team—R. Mitchell, Esq., 4 Fowler Crescent, Loanhead.  
2nd Team—D. Dalgleish, Esq., 75 Carlowrie Pl., Gorebridge.  
3rd Team—N. Celenski, Esq., 1 Rowantree Rd., Easthouses.  
4th Team—C. Bennett, Esq., 4a Campview, Danderhall, By  
Dalkeith.  
5th Team—G. Todd, 2 Sherwood Terrace, Bonnyrigg.  
DIRECTIONS—By Bus—Take Foundry Lane from Town Centre,  
follow signs to "Hospital". By Car—Along Hunter Avenue  
(off Loanhead High Street).

## MUIRHOUSE CIVIL SERVICE

CLUB ADDRESS—Civil Service Sports Pavilion, Marine Drive,  
Edinburgh, 4.  
SECRETARY—G. E. Brewerton, Esq., 5 Muirwood Drive, Currie.  
Tel.: PEN 2411 (Home), CRA 4040 Ext. 650 (Bus).  
DIRECTIONS—Bus Nos. 8, 14, 17, 47 to Muirhouse Roundabout.  
Club 150 yds. on left down Marine Drive.

## MURRAYFIELD MEMORIAL

CLUB ADDRESS—17 Corstorphine Road, Edinburgh, 12.  
SECRETARY—G. H. Smith, Esq., 2 Marchmont Road, Edin-  
burgh, 9. Tel.: FOU 2288 (Home), WAV 2591 (Bus).  
TEAM SECRETARIES—  
1st Team—A. McLean, Esq., 69 Promenade, Edinburgh, 15.  
Tel.: POR 1407 (Home), LEI 1815 (Bus).  
2nd Team—Club Secretary.

3rd Team—Miss M. Terras, 17 Saughton Park, Edinburgh, 12.  
Tel.: DON 7571 (Home).

4th Team—J. Lothian, Esq., 11 Stewart Terr., Edinburgh, 11.

5th Team—J. Nixon, Esq., 29 Cowan Road, Edinburgh, 11.  
Tel.: CAL 7861 (Bus).

6th Team—W. Forrest, Esq., 16 Warriston Rd., Edinburgh, 6.

7th Team—A. McGregor, Esq., 21 Broomlea Cres., Edinburgh,  
12. Tel.: COR 4012 (Home).

DIRECTIONS—Bus Nos. 12, 26 to stop past Roseburn. Continue  
on Main Road—Club 20 yds. past Car Showroom.

#### MUSSELBURGH COMMUNITY CENTRE

CLUB ADDRESS—Musselburgh Community Centre, Stoneyhill,  
Musselburgh.

SECRETARY—R. Rutherford, Esq., 8 Stoneybank Rd., Mussel-  
burgh. Tel.: MUS 2323 (Bus).

DIRECTIONS—Take right fork at "Crudens"—2nd opening on  
right.

#### NORTH MERCHISTON CLUB

CLUB ADDRESS—Watson Crescent, Edinburgh, 11.

SECRETARY—A. McKean, Esq., 7 Ritchie Pl., Edinburgh, 11.  
Tel.: DON 1757 (Bus).

TEAM SECRETARIES—

1st Team—Club Secretary.

2nd Team—A. Middlemiss, Esq., 32 Bonnington Gardens,  
Edinburgh.

3rd Team—S. Moodie, Esq., 168 Colinton Mains Road.,  
Edinburgh.

4th Team—R. Campbell, Esq., 92 Temple Park Road, Edin.

5th Team—J. McAra, Esq., 92 Temple Park Road, Edinburgh.

DIRECTIONS—Bus Nos. 1, 34 and 35 to Dundee Street—Up  
Fowler Terrace, 2nd on right is Watson Crescent.

#### PORTOBELLO SENIOR SECONDARY SCHOOL

CLUB ADDRESS—Duddingston Road, Edinburgh, 15.

SECRETARY—Miss C. Robertson, 36 Christian Cres., Edinburgh,  
15.

DIRECTIONS—Bus No. 42 to Duddingston Rd., Edinburgh, 15.

#### PORTOBELLO RAILWAYMAN'S STAFF ASSOCIATION

CLUB ADDRESS—Loftus Hall, Wellington St., Edinburgh, 15.

SECRETARY—J. Adams, Esq., 21 East Hermitage Place, Edin-  
burgh, 6.

TEAM SECRETARIES—

1st Team—J. Sutherland, Esq., 8 Dalgetty Ave., Edinburgh, 7.  
Tel.: ABB 2604 (Home).

2nd Team—Club Secretary.

DIRECTIONS—Bus Nos. 12, 15, 26 and 42 to Portobello Town  
Hall, 3rd Street on left towards Joppa—Hall halfway down  
on left.

## POST OFFICE

CLUB ADDRESS—Telephone Exchange, Fountainbridge, Edinburgh, 3.

SECRETARY—P. Candlin, Esq., 71 Redford Loan, Edinburgh, 13.  
Tel.: COL 2000 (Home), GPO 1234 (Ext. 586) (Bus).

### TEAM SECRETARIES—

1st Team—Club Secretary.

2nd Team—I McLaren, Esq., 100 Gracemount Dr., Edinburgh,  
9. Tel.: G.P.O. 9338 (Bus).

3rd Team—

DIRECTIONS—Corner of Gardiner's Crescent and Fountainbridge  
opposite Palais de Danse.

## REGISTER HOUSE

CLUB ADDRESS—Register House, Princes St., Edinburgh, 1.

SECRETARY—P. G. Skea, Esq., 12 Blinkbonny Rd., Edinburgh, 4.  
Tel.: WAV 2561 Ext. 80 (Bus).

### TEAM SECRETARIES—

1st Team—Club Secretary.

2nd Team—J. Tully, Esq., 42 Niddrie Mains Dr., Edinburgh.  
Tel.: WAV 2561 Ext. 21 (Bus).

DIRECTIONS—Past side entrance of Woolworth's through large  
gate—Bear right—Follow path.

## ROVER SCOUTS

CLUB ADDRESS—Scout Hall, South Trinity Rd., Edinburgh, 5.

SECRETARY—B. Dishon, Esq., 38 Northfield Farm Avenue,  
Edinburgh, 8.

DIRECTIONS—Bus Nos. 1, 8, 9, 14, 19, 23 and 27 to traffic lights  
at Goldenacre—South Trinity Road is off Ferry Road—Hall  
on right hand side—50 yds.

## ROYSTON BOYS' CLUB

CLUB ADDRESS—Royston Mains Gardens, Edinburgh, 5.

SECRETARY—W. Addison, Esq., 1/6 Inchcolm Court, Edinburgh, 4.

### TEAM SECRETARIES—

1st Team—Club Secretary.

2nd Team—J. Gladstone, Esq., 7 Wardieburn Street West,  
Edinburgh, 5.

3rd Team—W. Burns, Esq., Pilton Drive North, Edinburgh.

DIRECTIONS—Bus Nos. 14 or 19 from Town Centre to Royston  
Mains Gardens.

## ST CUTHBERT'S WELFARE

CLUB ADDRESS—24 Polwarth Terrace, Edinburgh.

SECRETARY—T. Sutherland, Esq., 12 Muirieston Road, Edinburgh, 11.

DIRECTIONS—Bus No. 9 to Ashley Terrace—Premises on Road  
parallel to main road.

### ST. MATTHEW'S YOUTH FELLOWSHIP

CLUB ADDRESS—St. Matthew's Church, Cluny Gardens, Edinburgh, 10.

SECRETARY—I. M. Goulding, Esq., 10 Craiglea Drive, Edinburgh, 10. Tel.: MOR 7308 (Home).

DIRECTIONS—Bus Nos. 5, 11, 15, 16, 23 and 41 to Morningside Stn. Church Hall at intersection of Braid Road and Cluny Gardens.

### THISTLE FOUNDATION

CLUB ADDRESS—Niddrie Mains Rd., Craigmillar, Edinburgh, 9.

SECRETARY—Com. A. H. Diack, D.S.C., R.N. (Retd.), c/o Thistle Foundation. Tel.: ABB 3366 (Home).

DIRECTIONS—Bus Nos. 2, 2a or 36. Stop outside Foundation.

### UNITED GLASS BOTTLE WORKS

CLUB ADDRESS—Sports & Social Club, High St., Edinburgh, 15.

SECRETARY—J. Morrison, Esq., 15/3 Meadowfield Gardens, Edinburgh, 8. Tel.: POR 2201 (Bus).

DIRECTIONS—Bus to Portobello Pool—30 yds. on opposite side—Through a pend.

### WILKIE HOUSE

CLUB ADDRESS—Guthrie Street, Edinburgh, 1.  
10.

SECRETARY—A. McKay, Esq., 29 Springvalley Terr., Edinburgh,

TEAM SECRETARIES—

1st Team—J. Lynn, Esq., 4 Duncan Street, Edinburgh.

2nd Team—Club Secretary.

DIRECTIONS—30 yds. up Chamber Street rom Bridges. At foot of Guthrie Street.

### Y.M.C.A.

CLUB ADDRESS—Y.M.C.A. Hall, 14 South St. Andrew Street, Edinburgh, 2.

SECRETARY—C. Vesco, Esq., 4/6 Lochview Court, Holyrood Rd., Edinburgh, 8. **CAL 2533 Ex. 28.**

TEAM SECRETARIES—

1st Team—Club Secretary.

2nd Team—Club Secretary.

3rd Team—A. Schooler, Esq., 132 Drumbrae Drive, Edinburgh, 4.

DIRECTIONS—Street opposite Waverley Station off Princes St.

**Official Badge Maker to the S.T.T.A.**

# **R. W. FORDYCE**

(Prop. J. M. C. COOK)  
**GLOVER & HOSIER**

**33 BRUNTSFIELD PLACE**  
**EDINBURGH, 10**

TEL. FOU 1763 - POR 2209

---

**Blazer Badges add Club Ties made to order**  
**Any design copied or new designs submitted**  
**Reasonable Prices and Speedy Delivery**

---

**Naval - Military - R.A.F. accessories**



NOTES

CERTIFICATE OF REGISTRATION

This is to certify that

\_\_\_\_\_

\_\_\_\_\_

\_\_\_\_\_

\_\_\_\_\_

is a member of

\_\_\_\_\_

\_\_\_\_\_

\_\_\_\_\_

Table Tennis Club

signature of \_\_\_\_\_

\_\_\_\_\_

W. WILSON

\_\_\_\_\_

EDINBURGH AND DISTRICT  
TABLE TENNIS LEAGUE  
(AFFILIATED TO THE S.T.T.A.)

CERTIFICATE OF REGISTRATION

This is to Certify that:

NAME

PATRICIA R. KERR

ADDRESS

46, BARONY TERR.

EDINBURGH 12.

is a Member of

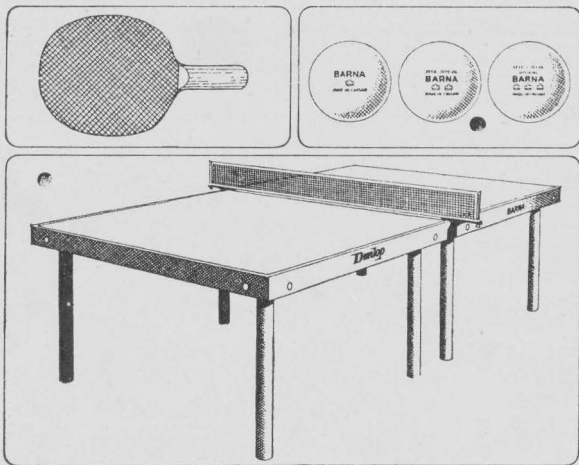
GAMBIT

Table Tennis Club

Signature of Player

Patricia R. Kerr

W. LINCOLN,  
Match Secretary.



Dunlop Barna championship tables, Three Crown balls, nets and posts make up the finest table tennis equipment in the world.

YOU'LL DO BETTER WITH

**Dunlop**

**THE WORLD'S FASTEST TABLE**



**AND BATS TO WIN WORLD TITLES**

by

**JAQUES**

*to the design of British champions*

**MARY SHANNON-WRIGHT**

**DENIS NEALE**

**BRIAN WRIGHT**

*Illustrated catalogue of  
the complete range of  
JAQUES T.T. EQUIPMENT  
free on request from*

**JOHN JAQUES & SON LTD.**  
**Thornton Heath • Surrey**

---

