

EDINBURGH AND DISTRICT



**TABLE TENNIS  
LEAGUE**

**Handbook**

**SEASON 1970-71**

ALL THE LATEST  
IN  
TABLE TENNIS  
FROM A  
BALL TO A TABLE  
**MACKENZIE'S**

**SPORTS SHOPS**

NEXT EMPIRE AND KINGS THEATRES  
EDINBURGH

**Our Only Address**

# THE EDINBURGH AND DISTRICT TABLE TENNIS LEAGUE

(Affiliated to The Scottish Table Tennis Association)

## Office-Bearers

*Honorary President:*

J. A. T. BROWN, Esq.

*Honorary Vice-Presidents:*

J. WALKER, Esq.

R. F. D. HAYMAN, Esq.

P. H. CANDLIN, Esq.

*President:*

G. H. SMITH, Esq.,

*Vice-President:*

G. E. BREWERTON, Esq.

*Hon. Secretary:*

Miss J. M. McKAY,

48 Redford Road, Edinburgh E13 OAE.

Tel: 441/1904.

*Hon. Treasurer:*

J. M. McCORMACK, Esq.,

2 Bramdean Place, Edinburgh, EH10 6JS.

Phone: 447/1919 (Home).

*Match Secretary:*

A. HAY, Esq., ✓

71 Traquair Park West, Edinburgh EH12.

Tel: 334/3926 (Home). BUS. 225/6151

*Committee:*

B. DAWSON (Post Office).

D. HUNTER (Murrayfield).

W. MOFFAT (12th B.B.'s).

K. MACFARLANE, (Y.M.C.A.).

A. McKEAN (North Merchiston B.C.) ✓

E. HENDERSON (Y.M.C.A.).

I. McLAREN (Post Office). ✓

R. THOMAS (Murrayfield). ✓

J. McCONNELL (Tynecastle B.C.) ✓

MRS J. MACKENZIE (Gambit).

MRS P. KERR (Gambit).

## FOREWORD

Dear League Member,

I would firstly like to welcome everyone to the new season, especially new members, and hope that it will be a successful one.

As one of the people responsible for resurrecting this Handbook in Season 1965/66, it is extremely gratifying to find that it is still with us, and improving in content every year.

However it is apparent that not enough use is being made of it, as the number of teams defaulting in various ways last season was shocking, and all through ignorance of the Rules and Regulations.

There have been some changes since last season so please make a point of becoming familiar with them and thereby saving a lot of unnecessary inconvenience to others.

Never before has Edinburgh had the facilities for playing table tennis that the Meadowbank Stadium now offers and I would ask you all to participate in these facilities to the full. Only in this way can the cost and time be warranted.

The next few years will see a steady increase in the number of show events available to the Edinburgh player, with the European Youth Championships at Meadowbank in 1974 probably being the largest venture that Scotland would consider tackling.

The planning of an event of this size is enormous and, although this is being principally organised by the S.T.T.A., Edinburgh will be very much involved. Help by Edinburgh players, in any shape or form, would be extremely appreciated.

Finally, remember this is a sport and play it in a sporting manner, be an enjoyable winner and a good loser.

With all the best wishes for the season.

G. H. SMITH, President.

# CONSTITUTION

---

1. The League shall be known as "THE EDINBURGH AND DISTRICT TABLE TENNIS LEAGUE."

2. The League shall affiliate to the Scottish Table Tennis Association.

3. **OBJECT**—To promote, develop and control the game of Table Tennis within Edinburgh & District.

4. (a) The Office-bearers shall consist of the President, who will act as Chairman at meetings, Vice-President, Honorary Secretary, Honorary Treasurer and Match Secretary, who with at least seven members to be elected at the Annual General Meeting, will constitute the Committee. The Committee shall be elected annually and any retiring member shall be eligible for re-election. No club shall be entitled to have more than three representatives on the Committee.

(b) The Committee shall have power to co-opt members who will not have voting power but who are not subject to the proviso in the final sentence of Paragraph 2 (a).

5. The Annual General Meeting shall be held by the 15th May and each Club in the League shall be entitled to send one representative for each two teams or part thereof entered in the League. The meeting shall be called by circular to each Club and fourteen days' notice of the meeting shall be given. At the Annual General Meeting each representative present shall have one vote.

6. Honoraria, the amount of which shall be determined at the A.G.M., shall be paid to such officials of the League as recommended at the A.G.M.

7. A Special General Meeting of the League shall be convened on a resolution of the Committee or within fourteen days of receipt by the Secretary of a resolution signed by the authorised representatives of at least one-third of the Clubs in membership of the League, and Paragraph 3 of the Constitution respecting circulation of notices and procedure shall apply as at the Annual General Meeting. Only business detailed on the Agenda, which shall be circulated to all Clubs in League membership, may be discussed at a Special General Meeting. There shall be no "Any other business" item on the Agenda.

8. The Committee shall have powers to decide matters arising in connection with the League. The Committee shall have power to appoint representatives from each Division of the League to meet as necessary during the playing season to discuss the affairs of all the Divisions.

9. Seven shall form a quorum of the League Committee and the Chairman at any meeting shall have a deliberate as well as a casting vote.

# RULES

---

1. The games under the League shall be played according to the Rules of the Scottish Table Tennis Association.

All tables in the League must conform to the standard laid down by the Scottish Table Tennis Association regarding size of table and the required bounce of the ball on the playing surface.

2. The League shall be open to such Clubs in Edinburgh and District as the Committee may decide. A Club may enter more than one team in the League but each team so entered must pay in advance an Annual Subscription to be determined at the Annual General Meeting of the League, plus such fees as are payable to the Scottish Table Tennis Association.

3. All players must be registered members of the Club for which they play. All players must be registered with the Scottish Table Tennis Association at least 24 hours before playing in any match. Should any team play a non-registered player then all games won by that team, in the match in question, shall be void and will be awarded to the opposing team.

4. No team shall play in any match until all fees have been paid. Any team failing to comply with this rule shall forfeit that match.

5. Except with the permission of the League Committee no player shall play in more than one League, or for more than one Club in that League in the same season.

6. Any club entering more than one team in the League should register their three strongest players in the first team, their next three strongest players in the second team, and so on in order of playing strength for all teams. The Committee shall have the power to refuse the registration of any player where his playing strength warrants him playing for a higher team. No player shall be allowed to play for a lower team than the one for which he or she is registered, but may play for a higher team; having played a TOTAL of six matches with a higher team or teams in League matches other than the one for which he is registered, shall then only be eligible to play for the highest team played for during these matches.

Any player joining a club after initial registrations have been submitted should be registered for the team most suited to his playing strength.

Any club wishing to relegate a player or players to a lower team must apply to the Committee to do so.

7. (a) When entries are made to the League a home night for each team will be specified. A fixture list based on this information will be compiled and included in the Handbook.

(b) A copy of the Handbook will be supplied to each player on registration. A fee to cover cost will be charged.

8. (a) A match is played between two sides of three players each, and consists of 9 games (best of three sets), each player playing every opponent. One (1) Point will be awarded for a win. Prior to the commencement of each match the names of the players of the Home Team shall be inserted on the Match Score-card by the Captain of the Home Team and thereafter the names of the players of the Away Team shall be inserted by the Captain of the Away Team. The order of play shall be as printed on the Match Score-card.

(b) All matches should start at 7.30 p.m. unless by special arrangement. Any player not ready to play within half an hour of the scheduled start of the match may forfeit all games in that match.

(c) The Home Club is responsible for posting the result on the addressed score card to reach the Match Secretary not later than seven days after the date of the match specified in the handbook. If the Match Secretary does not receive a result or notice of postponement within this time, the home club will be fined, the amount to be fixed at the A.G.M.

In the event of postponement of a match for any reason, it is the responsibility of the Home Club to notify the Match Secretary in writing within seven days of the date on which the match should have been played, giving details of the revised date and the reasons for re-arrangement. The Away team may not postpone a match except by agreement with the Home team. (As a matter of courtesy the Away teams should make their request to the Home team in reasonable time.) In these circumstances it remains the responsibility of the Home team to notify the Match Secretary of the revised arrangements.

In cases of doubt or dispute, complaints from either side must be in the hands of the match Secretary within seven days of the original date of the match. All postponed matches must be played on or before the Friday of the last week of the season. In the event of a revised date suitable to

both teams not having been agreed by two weeks before the end of the season, the HOME team must report the facts immediately to the Match Secretary. If the home team fails to do this and the match remains unplayed at the close of the season, the match will be awarded to the opposing AWAY side.

9. Each Club shall pay in advance a deposit of £1, returnable at the end of the season provided the Club has fulfilled all its fixtures to the satisfaction of the Committee. A serious view will be taken of the non-appearance of a team, when either insufficient or no notice has been given to their opponents. Such offences will be punished by a fine as under:—

First Offence—8/-, Second Offence—12/-, Third Offence—suspension of team from League for remainder of season.

10. A fine of 5/- will be imposed on any Club found guilty of ungentlemanly conduct.

11. A Club having more than one team will require to replace their deposit of £1 within one month, if the previous deposit of £1 has been lost. Failure to comply with this rule will lead to the Club being suspended.

12. No player or Club in membership of the League shall, without the consent of the Committee, participate in any match, exhibition or otherwise which is undertaken by any person or persons for the purposes of financial gain. Likewise, no player or Club in membership of the League shall, without the consent of the Committee, accept any payment for participating in any match either by way of a fee or expense.

13. (a) Each Division of the League will consist of one Section.

(b) At the end of each season promotion and relegation will be effected as follows:—

1st Division: Bottom two teams will be relegated to 2nd Division.

Other Divisions: Top two teams will be promoted to a higher Division, and the bottom two teams will be relegated to a lower Division.

In the event of ties, games won and lost will be considered.

14. The Constitution and Rules shall only be capable of being altered, added to, or amended on Notice being given to the League Secretary of any proposed alteration not later than the end of March, which notice



shall give in detail any proposed alteration, addition or amendment. A motion to alter, amend or add to the Constitution and Rules must be carried at the Annual General Meeting by a majority of at least two-thirds of those present and voting at the meeting.

## **ADVICE TO PLAYERS**

Assist your Club Secretary in every way you can; he needs it!

Know the Rules of the Game and of the League.

Take your share of umpiring at League matches, and, when playing, accept the umpire's decision with a good grace—be a good loser.

Do all you can to encourage the presence of spectators, not only at Club matches but at Inter-League events and Championships.

## **ADVICE TO SECRETARIES**

The League Committee are always willing to be of assistance to your Club. You are requested to make yourself familiar with the rules, but do not hesitate to seek the advice of a Committee Member if you are in doubt on any point.

Always answer correspondence promptly. If unable to give a definite reply for a few days send a post card to that effect.

Your attention is drawn particularly to the rules governing the night that a fixture should be played.

Score cards should be completed in ink, checked by both captains and sent, by the captain of the Home team, to the Match Secretary promptly, normally within 24 hours.

Study the comfort of your visitors and provide adequate dressing accommodation.

Make sure that information passed to you by the Committee is passed on to your members quickly.

If there is any change in the details printed in this handbook which affect any of your teams, it is your duty to notify, in writing, all the Club Secretaries in the Division concerned. You must also of course advise the Match Secretary without delay.

# TOURNAMENT RESULTS

## East of Scotland Open

### MEN'S SINGLES

Season 1964-65

" 1965-66

" 1966-67

" 1967-68

" 1968-69

" 1969-70

### WINNER

M. Sugden (Edin.)

M. Sugden (Edin.)

B. Burn (Eng.)

D. Neale (Eng.)

S. Lennie (Glas.)

M. Sugden

### RUNNER-UP

B. Burn (Enng.)

I Barclay (Edin.)

S. Lennie (Eng.)

I. Barclay (Edin.)

B. Kean (Eng.)

E. Sutherland

### LADIES' SINGLES

Season 1964-65

" 1965-66

" 1966-67

" 1967-68

" 1968-69

" 1969-70

P. Clarke (Eng.)

L. Barrie (Glas.)

L. Barrie (Glas.)

O. Hawkins (Glas.)

K. Angus

P. Jackson

O. Hawkins (Glas.)

O. Hawkins (Glas.)

O. Hawkins (Glas.)

P. Jackson (Eng.)

S. Marshall

O. Hawkins

### JUNIOR SINGLES

Season 1964-65

" 1965-66

" 1966-67

" 1967-68

" 1968-69

" 1969-70

B. Burn (Eng.)

E. Sutherland (Edin.)

E. Sutherland (Edin.)

C. McLeod (Perth)

D. Barr (Lan.)

D. Charleston

J. Hawkins (Glas.)

W. Gibbs (Edin.)

D. McIntosh (Dun.)

D. McGilvray

R. Partyka

J. Graham

### MEN'S DOUBLES

Season 1964-65

" 1965-66

" 1966-67

" 1967-68

" 1968-69

" 1969-70

S. Lennie/A. Ransome

R. Kerr/T. McMichael

S. Lennie/B. Burn

D. Neale/I. Barclay

T. McMichael/E. Sutherland

M. Sugden/B. Kean

G. Maxwell/A. Laidlaw

J. Carswell/D. Hogg

R. Kerr/T. McMichael

E. Sutherland/P. Cameron

B. Kean/D. Berry

T. Forker/E. Sutherland

### LADIES' DOUBLES

Season 1964-65

" 1965-66

" 1966-67

" 1967-68

" 1968-69

" 1969-70

L. Barrie/D. Donaldson

L. Barrie/D. Donaldson

L. Barrie/M. Murray

O. Hawkins/M. Coats

K. Angus/Ch. McBeath

K. Angus/E. Smith

O. Hawkins/D. Robertson

O. Hawkins/D. Robertson

O. Hawkins/E. Hogg

B. Johnston/E. Smith

J. McCutcheon/M. Neish

S. Campbell/O. Hawkins

### MIXED DOUBLES

Season 1964-65

" 1965-66

" 1966-67

" 1967-68

" 1968-69

" 1969-70

S. Lennie/P. Clarke

J. Dow/O. Hawkins

P. Cameron/L. Barrie

D. Neale/S. Lee

G. Angus/K. Angus

R. Yule/E. Smith

J. Reilly/L. Barrie

R. Kerr/P. Kerr

J. Dow/O. Hawkins

I. Barclay/B. Johnston

B. Lynch/M. Davidson

R. Kerr/O. Hawkins

# Edinburgh Open

## MEN'S SINGLES

Season 1964-65  
 ,, 1965-66  
 ,, 1966-67  
 ,, 1967-68  
 ,, 1968-69  
 ,, 1969-70

## WINNER

M. Sugden (Edin.)  
 M. Sugden (Edin.)  
 R. Kerr (Edin.)  
 J. Dow (Glas.)  
 R. Yule (Aber.)  
 R. Yule (Aber.)

## RUNNER-UP

S. Lennie (Eng.)  
 I. Barclay (Edin.)  
 A. Chilvers (Eng.)  
 S. Lennie (Eng.)  
 E. Sutherland (Edin.)  
 R. Kerr (Edin.)

## LADIES' SINGLES

Season 1964-65  
 ,, 1965-66  
 ,, 1966-67  
 ,, 1967-68  
 ,, 1968-69  
 ,, 1969-70

L. Barrie (Glas.)  
 L. Barrie (Glas.)  
 L. Barrie (Glas.)  
 L. Barrie (Glas.)  
 L. Barrie (Glas.)  
 E. Smith

O. Hawkins (Glas.)  
 O. Hawkins (Glas.)  
 O. Hawkins (Glas.)  
 O. Hawkins (Glas.)  
 O. Hawkins (Glas.)  
 Mrs P. Kerr (Edin.)

## JUNIOR SINGLES

Season 1964-65  
 ,, 1965-66  
 ,, 1966-67  
 ,, 1967-68  
 ,, 1968-69  
 ,, 1969-70

J. Hawkins (Glas.)  
 W. Gibbs (Edin.)  
 E. Sutherland (Edin.)  
 R. Yule (Aber.)  
 D. Charleston  
 A. McCulloch

W. Gibbs (Edin.)  
 D. McIntosh (Dun.)  
 D. McIntosh (Dun.)  
 T. Sneddon  
 A. Struthers  
 D. Fraser

## MEN'S DOUBLES

Season 1964-65  
 ,, 1965-66  
 ,, 1966-67  
 ,, 1967-68  
 ,, 1968-69  
 ,, 1969-70

M. Sugden/J. Dow  
 R. Kerr/T. McMichael  
 S. Lennie/.B Burn  
 I. Barclay/J. Dow  
 R. Kerr/S. Lennie  
 I. Hay/B. Morgan

I. Barclay/J. Reilly  
 M. Sugden/J. Hawkins  
 J. Hawkins/G. Anderson  
 R. Kerr/T. McMichael  
 R. Baxter/E. Bruce  
 R. Kerr/R. Yule

## LADIES' DOUBLES

Season 1964-65  
 ,, 1965-66  
 ,, 1966-67  
 ,, 1967-68  
 ,, 1968-69  
 ,, 1969-70

O. Hawkins/E. Bone  
 L. Barrie/D. Donaldson  
 O. Hawkins/L. Barrie  
 O. Hawkins/K. Angus  
 K. Angus/O. Hawkins  
 L. Montague/E. Smith

L. Barrie/D. Donaldson  
 G. Shields/M. Coats  
 -. Chape/P. Atkinson  
 L. Barrie/E. Smith  
 L. Barrie/J. Fischer  
 S. Campbell/M. Neish

## MIXED DOUBLES

Season 1964-65  
 ,, 1965-66  
 ,, 1966-67  
 ,, 1967-68  
 ,, 1968-69  
 ,, 1969-70

J. Reilly/L. Barrie  
 J. Dow/O. Hawkins  
 P. Cameron/L. Barrie  
 I. Barclay/E. Smith  
 R. Kerr/O. Hawkins  
 R. Yule/E. Smith

J. Dow/O. Hawkins  
 P. Cameron/L. Barrie  
 B. Burn/P. Atkinson  
 J. Dow/O. Hawkins  
 S. Lennie/L. Barrie  
 R. Bhalla/L. Montague

## Scottish Closed

### MEN'S SINGLES

Season	WINNER	RUNNER-UP
1964-65	R. Kerr (Edin.)	J. Dow (Glas.)
1965-66	M. Sugden (Edin.)	I. Barclay (Edin.)
1966-67	B. Kean (Eng.)	T. McMichael (Edin.)
1967-68	M. Sugden (Edin.)	I. Barclay (Edin.)
1968-69	M. Sugden (Edin.)	J. Hawkins (Glas.)
1969-70	M. Sugden (Edin.)	P. Cameron (Glas.)

### LADIES' SINGLES

Season 1964-65	O. Hawkins (Glas.)	L. Barrie (Glas.)
1965-66	L. Barrie (Glas.)	D. Donaldson (Dun.)
1966-67	L. Barrie (Glas.)	O. Hawkins (Glas.)
1967-68	L. Barrie (Glas.)	O. Hawkins (Glas.)
1968-69	K. Angus, (Aberdeen)	O. Hawkins (Glas.)
1969-70	L. Barrie (Glas.)	K. Angus (Aberdeen)

### BOYS' SINGLES

Season 1964-65	J. Hawkins (Glas.)	E. Sutherland (Edin.)
1965-66	E. Sutherland (Edin.)	C. McLeod (Perth)
1966-67	D. McIntosh (Dun.)	E. Sutherland (Edin.)
1967-68	C. McLeod (Perth)	T. Sneddon
1968-69	D. Charleston	A. Struthers
1969-70	D. Charleston	J. Graham

### GIRLS' SINGLES

Season 1964-65	M. Murray	W. Nixon
1965-66	—	—
1966-67	—	—
1967-68	—	—
1968-69	—	—
1969-70	E. Smith	L. Montague

### MEN'S DOUBLES

Season 1964-65	R. Kerr/T. McMichael	J. Carswell/D. Hogg
1965-66	R. Kerr/T. McMichael	M. Sugden/J. Hawkins
1966-67	M. Sugden/B. Kean	C. Vesco/E. Sutherland
1967-68	I. Barclay/D. Hogg	M. Sugden/B. Kean
1968-69	M. Sugden/B. Kean	E. Sutherland/G. Anderson
1969-70	J. Hawkins/I. Hay	R. Yule/R. Kerr

### LADIES' DOUBLES

Season 1964-65	L. Barrie/D. Donaldson	O. Hawkins/D. Robertson
1965-66	L. Barrie/D. Donaldson	O. Hawkins/D. Robertson
1966-67	M. Murray/L. Barrie	O. Hawkins/D. Robertson
1967-68		NOT HELD.
1968-69	O. Hawkins/K. Angus	E. Smith/C. Smith
1969-70	K. Angus/E. Smith	O. Hawkins/S. Campbell

### MIXED DOUBLES

Season 1964-65	J. Hawkins/D. Robertson	J. Dow/O. Hawkins
1965-66	P. Cameron/L. Barrie	J. Dow/O. Hawkins
1966-67	P. Cameron/L. Barrie	B. Kean/M. Murray
1967-68	I. Barclay/B. Johnston	B. Kean/O. Hawkins
1968-69	J. Dow/O. Hawkins	E. Sutherland/E. Smith
1969-70	M. Sugden/L. Barrie	J. Hawkins/L. Montague

### JUNIOR DOUBLES

Season 1968-69	D. Barr/A. Struthers	P. Duffy/D. George
1969-70	A. McCulloch/S. Ferguson	J. Graham/L. Montague

# Scottish Open

## MEN'S SINGLES

Season 1964-65  
" 1965-66  
" 1966-67  
" 1967-68  
" 1968-69  
" 1969-70

## WINNER

R. Hampson (Eng.)  
B. Burn (Eng.)  
M. Sugden (Edin.)  
M. Sugden (Edin.)  
M. Sugden (Edin.)  
C. Barnes (Eng.)

## RUNNER-UP

D. Schofield (Eng.)  
J. Dow (Glas.)  
A. Tomlinson (N.Z.)  
T. Taylor (Eng.)  
E. Sutherland (Edin.)  
M. Sugden (Edin.)

## LADIES' SINGLES

Season 1964-65  
" 1965-66  
" 1966-67  
" 1967-68  
" 1968-69  
" 1969-70

M. Heppell (Eng.)  
P. Hemmings (Eng.)  
N. Traill (N.Z.)  
L. Barrie (Glas.)  
S. Howard (Eng.)  
L. Barrie (Glas.)

E. Bone (Glas.)  
M. Heppell (Eng.)  
L. Barrie (Glas.)  
O. Hawkins (Glas.)  
L. Barrie (Glas.)  
J. Jones (Jersey)

## BOYS' SINGLES

Season 1964-65  
" 1965-66  
" 1966-67  
" 1967-68  
" 1968-69  
" 1969-70

M. Johns (Eng.)  
K. Lawrence (Eng.)  
B. Keats (Eng.)  
T. Taylor (Eng.)  
N. Jarvis (Yorks.)  
A. Griffiths (Wales)

G. Salter (Eng.)  
A. Hydes (Eng.)  
P. Judd (Eng.)  
T. Clayton (Eng.)  
D. George  
J. Walker (N'land)

## GIRLS' SINGLES

Season 1964-65  
" 1965-66  
" 1966-67  
" 1967-68  
" 1968-69  
" 1969-70

M. Heppell (Eng.)  
M. Heppell (Eng.)  
Y. Fogarty (N.Z.)  
B. Montgomery (Eng.)  
S. Howard (Eng.)  
E. Smith (Dun.)

M. Murray (Dun.)  
P. Hemmings (Eng.)  
L. Bashford (Eng.)  
E. Rea (Eng.)  
L. Bashford (Eng.)  
Ch. McBeath (Edin.)

## VETERAN SINGLES

Season 1964-65  
" 1965-66  
" 1966-67  
" 1967-68  
" 1968-69  
" 1969-70

E. Teasdale (Edin.)  
H. Baxter (Glas.)  
H. Baxter (Glas.)  
H. Baxter (Glas.)  
P. McFarlane (Fife)  
T. Donlan (Ches.)

H. Baxter (Glas.)  
L. Heppell (Eng.)  
G. Maitland (Edin.)  
T. Lamond (Stir.)  
A. Nixon (Dun.)  
L. Browning (Yorks.)

## MEN'S DOUBLES

Season 1964-65  
" 1965-66  
" 1966-67  
" 1967-68  
" 1968-69  
" 1969-70

R. Hampson/D. Schofield  
B. Kean/B. Burn  
A. Tomlinson/B. Foster  
M. Sugden/I. Barclay  
M. Sugden/I. Barclay  
C. Barnes/A. Ransome

M. Johns/G. Salter  
R. Kerr/T. McMichael  
B. Burn/B. Kean  
T. Taylor/P. Judd  
L. Landry/I. Robertson  
M. Johns/I. Robertson

## LADIES' DOUBLES

Season 1964-65  
" 1965-66  
" 1966-67  
" 1967-68  
" 1968-69  
" 1969-70

M. Heppell/P. Richmond  
P. Hemmings/M. Heppell  
- Johnston/Y. Fogarty  
O. Hawkins/K. Angus  
S. Howard/L. Bashford  
M. Phillips/K. Angus

O. Hawkins/D. Robertson  
D. Donaldson/L. Barrie  
O. Hawkins/L. Barrie  
L. Barrie/G. Shields  
L. Barrie/K. Angus  
O. Hawkins/S. du Feu

## MIXED DOUBLES

Season 1964-65  
" 1965-66  
" 1966-67  
" 1967-68  
" 1968-69  
" 1969-70

R. Hampson/M. Heppell  
A. Hydes/M. Heppell  
B. Foster/N. Traill  
M. Sugden/L. Barrie  
M. Sugden/L. Barrie  
C. Barnes/M. Walker

J. Dow/O. Hawkins  
K. Lawrence/P. Hemmings  
M. Sugden/L. Barrie  
L. Landry/B. Montgomery  
I. Robertson/S. Howard  
R. Kerr/O. Hawkins

# Edinburgh Confined

## OPEN SINGLES

	WINNER	RUNNER-UP
Season 1964-65	M. Sugden	R. Kerr
„ 1965-66	I. Barclay	R. Kerr
„ 1966-67	D. Hogg	C. Vesco
„ 1967-68	E. Sutherland	D. Hogg
„ 1968-69	D. Hogg	D. Barr
„ 1969-70		

## LADIES' SINGLES

	WINNER	RUNNER-UP
Season 1964-65	—	—
„ 1965-66	Mrs E. Hogg	—
„ 1966-67	Mrs E. Hogg	Mrs P. Kerr
„ 1967-68	Mrs P. Kerr	Mrs J. Mackenzie
„ 1968-69	Mrs J. Mackenzie	Mrs P. Kerr
„ 1969-70	Miss Ch. McBeath	Mrs P. Kerr

## MINOR SINGLES

	WINNER	RUNNER-UP
Season 1964-65	R. McLeod	C. Fuller
„ 1965-66	J. Finlay	A. Farmer
„ 1966-67	I. Gibson	J. Jack
„ 1967-68	A. McKean	D. Hunter
„ 1968-69	D. Barr	H. Nixon
„ 1969-70	G. Appleton	G. Maitland

## OPEN DOUBLES

	WINNER	RUNNER-UP
Season 1964-65	R. Kerr/T. McMichael	D. Hogg/R. McLeod
„ 1965-66	R. Kerr/T. McMichael	D. Hogg/R. McLeod
„ 1966-67	A. Laidlaw/W. Gibbs	C. Vesco/E. Sutherland
„ 1967-68	D. Hogg/E. Sutherland	G. Smith/J. Bierman
„ 1968-69	D. Hogg/W. Gibbs	G. Smith/J. Bierman
„ 1969-70		

# FOR THE FINEST TABLE TENNIS CLOTHING AND EQUIPMENT . . .

. . . Lillywhites takes some beating! There are the famous "Stiga" bats from Sweden, Lillywhites' own "Gold Crown" as well as many other well known makes — there is clothing and footwear too, and of course all other equipment for the table tennis enthusiast.

# Lillywhites

129 PRINCES STREET · EDINBURGH EH2 4AJ

031-225 5831

# FINAL LEAGUE POSITIONS FOR SEASON 1969/70

## DIVISION ONE

	P	W	F	A	Pnts
Gambit I	26	26	218	14	26
Gambit II	26	20	146	87	20
Musselburgh	26	20	137	96	20
Y.M.C.A. I	26	17	142	92	17
Murrayfield I	26	14	128	106	14
Y.M.C.A. II	26	14	124	110	14
Gambit III	26	14	113	120	14
Register House I	26	12	109	125	12
Murrayfield II	26	11	105	128	11
Y.M.C.A. III	26	10	94	140	10
Muirhouse I	26	9	95	139	9
University I	26	8	95	137	8
Murrayfield III	26	7	88	146	7
Police I	26	0	39	193	0

## DIVISION TWO

	P	W	F	A	Pnts
North Merchiston I	26	25	189	45	25
MacTaggart Scott I	26	21	166	68	21
Crudens II	26	20	150	84	20
MacTaggart Scott II	26	19	154	80	19
Crudens I	26	18	138	95	18
Post Office I	26	16	128	105	16
Murrayfield IV	26	14	137	97	14
Roseburn Racquets	26	12	104	130	12
Muirhouse II	26	11	114	120	11
Civil Service I	26	11	95	139	11
Allan Street	26	6	94	140	6
Post Office II	26	6	86	148	6
University II	26	2	41	193	2
Police II	21	1	41	193	1

## DIVISION THREE

	P	W	F	A	Pnts
H.M. Prison	26	23	171	63	23
Ferranti	26	21	161	72	21
North Merchiston II	26	20	157	76	20
Y.M.C.A. IV	26	19	143	91	19
Century Ins. I	26	15	136	98	15
Royston I	26	15	124	110	15
MacTaggart Scott III	26	13	139	95	13
Maccabi I	26	13	115	119	13
MacTaggart Scott IV	26	10	103	131	10
Royston II	26	10	92	142	10
Gambit IV	26	9	79	155	9
Murrayfield V	26	7	94	150	7
Muirhouse III	26	6	93	141	6
University III	26	1	40	194	1



DIVISION FOUR	P	W	F	A	Pnts
Beechwood .....	26	23	164	70	23
Crudens III ... ..	26	22	155	79	22
North Merchiston III .....	26	17	138	96	17
Gambit V .....	26	17	135	99	17
Post Office III .....	26	15	139	95	15
Preston Lodge School ... ..	26	14	136	98	14
Civil Service III .....	26	14	115	119	14
Police III .....	26	13	109	125	13
Civil Service II .....	26	12	127	107	12
MacTaggart Scott V .....	26	12	122	112	12
Royston III ... ..	26	8	86	148	8
Muirhouse IV .....	26	7	85	149	7
Customs and Excise .....	26	5	72	160	5
Murrayfield VI .....	26	4	53	179	4

DIVISION FIVE	P	W	F	A	Pnts
Y.M.C.A. V ... ..	26	26	190	44	26
Tynecastle I ... ..	26	24	175	59	24
Post Office IV .....	26	20	162	72	20
Register House II .....	26	20	161	73	20
Century Ins. II .....	26	15	122	112	15
Brown Bros. ....	26	14	123	111	14
Pentland Y.C. ... ..	26	13	123	111	13
Tynecastle II .....	26	11	117	117	11
Lothianburn G.C. ....	26	9	110	124	9
F.E.C. ... ..	26	9	101	133	9
University IV ... ..	26	9	93	141	9
Sighthill I ... ..	26	8	83	151	8
Sighthill II .....	26	3	45	189	3
Police IV .....	26	2	40	194	2

DIVISION SIX	P	W	F	A	Pnts
Post Office V ... ..	19	19	147	24	19
E.C.T. ... ..	19	17	126	45	17
Deckers .....	19	10	99	72	10
Maccabi II .....	19	110	79	92	10
Loanhead Y.C. ... ..	19	9	84	87	9
Pleasance B.C. ....	19	7	75	96	7
Portobello School .....	19	7	75	96	7
Haddington C. Club I .....	19	7	75	96	7
Craigmillar B.C. I .....	19	7	70	101	7
Thistle Foundation .....	19	2	53	118	2

DIVISION SEVEN	P	W	F	A	Pnts
Clermiston Y.M.C.A. ... ..	24	22	191	25	22
Telford College ... ..	24	21	162	54	21
12th Boys' Brigade .....	24	19	147	69	19
Post Office VI .....	24	16	129	87	16
Sighthill III .....	24	15	135	81	15
Gracemount Y.C. ....	24	13	119	97	13
9th Boys' Brigade .....	24	12	111	105	12
Ainslie Park .....	24	12	101	115	12
Gambit VI .....	24	8	82	134	8
Fettes-Loretto B.C. ....	24	6	72	144	6
Haddington C. Club II .....	24	6	59	157	6
Craigmillar B.C. II .....	24	4	45	171	4
Police V ... ..	24	2	42	174	2

# LAWS OF TABLE TENNIS

*Together with Regulations and Recommendations respecting  
Equipment and Playing Conditions as adopted for  
International Competitions*

## SINGLES

### 1. THE TABLE

The table shall be in surface rectangular, 274 cm. (9 ft.) in length, 152.5 cm. (5 ft.) in width; it shall be supported in such a way that its upper surface shall be 76 cm. (2 ft. 6 in.) above the floor, and shall lie in a horizontal plane.

It shall be made of any material and shall yield a uniform bounce of not less than 22 cm. (8½ in.) and not more than 25 cm. (9¾ in.) when a standard ball, preferably of medium bounce, is dropped from a height of 30.5 cm. (12 in.) above its surface.

The upper surface of the table shall be termed the 'playing surface'; it shall be matt, colour very dark, preferably dark green, with a white line 2 cm. (¾ in.) broad along each edge.

The lines at the 152.5 cm. edges or ends of the playing surface shall be termed 'end lines'. The lines at the 274 cm. edges or sides of the playing surface shall be termed 'side lines'.

#### Recommendations

The table surface shall be of hard wood and either sprayed (for preference) or painted, but not freshly painted—for fresh colour is apt to come off on the ball surface—with a dull green cellulose lacquer or paint.

The table must be rigidly constructed.

If any lettering appears on the ends it should not be white off-white would be suitable.

#### Specification: Matt Surface

The glossiness of a surface measured with an EEL Glossometer (45° gloss head setting) should in no case exceed 6 and should preferably not exceed 2. Corresponding measurements with an ASTM/60° standard or Gardner instrument at 60° angle should in no case exceed 24 and should preferably not exceed 6. (Standard of reflection: polished black gloss equals 100.) In any case glossiness that enables the shapes of light sources to be distinguished should be regarded as excessive, and eliminated as soon as possible.

The requirement of a "matt" surface for the Table, the Ball and the Racket is to prevent a dazzling reflection of light from distracting the eye of the player. As well as discouraging the use of shiny materials in actual play, Associations should take positive steps, by an approach to manufacturers, importers and dealers and by approving the use only of matt materials, to ensure that satisfactory equipment, complying with this specification, is available.

## 2. THE NET AND ITS SUPPORTS

The playing surface shall be divided into two courts of equal size by a net running parallel to the end lines and 137 cm. (4 ft. 6 ins.) from each. The net, with its suspension, shall be 183 cm. (6 ft.) in length; its upper part along its whole length shall be 15.25 cm. (6 ins.) above the playing surface; its lower part along the whole length shall be close to the playing surface. The net shall be suspended by a cord attached at each end to an upright post 15.25 cm. (6 ins.) high; the outside limits of each post shall be 15.25 cm. (6 ins.) outside the side line.

### Recommendations

The net should be of a dark shade of green, and should be of an unsized (soft) mesh not less than 7.5 mm. nor more than 12.5 mm. square. It should have a white top, depending from the cord suspension, not more than 15 mm. wide. At each end the net should be securely attached from top to bottom to the post. (Note: That in accordance with Law 2, which provides that the net shall be suspended by a cord, only one cord—a single horizontal cord—may suspend the net and the attachment of the net to the post must be so loose as not to exert tension and thereby constitute a suspension.)

The diameter of the post should not exceed 22 mm. and any device for adjusting the height or tension of the cord suspending the net should be situated at the base of the post, should not project more than 7 mm. from the post.

## 3. THE BALL

The ball shall be spherical. It shall be made of celluloid or a similar plastic, white and matt; it shall not be less than 37.2 mm. (1.46 ins.) nor more than 38.2 mm. (1.50 ins.) in diameter; it shall not be less than 2.40 gr. (37 grains) nor more than 2.53 gr. (39 grains) in weight.

### Specification: Bounce

The standard bounce required shall be not less than 235 mm. (9½ ins.) and not more than 255 mm. (10 ins.) when the ball is dropped from a height of 305 mm. (12 ins.) on a specially designed steel block. Balls rebounding 235-241 mm. are described as low-bounce, 242-248 mm. as medium bounce and 249-255 mm. as high-bounce.

Only a brand of ball approved for the purpose as provided below may be used in World Championships, in Open International Table Tennis Competitions, or in International Matches unless otherwise agreed by the participating Associations.

Samples of brands of ball to be approved may be submitted for test only by the Association in whose territory the wholesale firm issuing the given brand of ball is situated. For any brand of ball, only the highest grade may be submitted for approval. No correspondence may be entered into direct with firms, except by permission of the Association concerned. Samples should be addressed to the Equipment Committee, with a copy of the application for test to the Hon. General Secretary of the Federation. Application for test must be accompanied by a fee to cover expenses, to be determined by the Advisory Committee, which may also decide a further appropriate fee if approval is given. A report of the examination shall be returned to the submitting Association and, with recommendation to the Advisory Committee.

The Advisory Committee may grant approval for choice by the respective organising Associations for use in World Championships, Open International Competitions and International Matches, or it may withhold approval. Decisions shall be notified to all member Associations.

Where approval is given the issuing firm may advertise the brand approved as "Approved by I.T.T.F."

Dates for submission of samples shall be fixed by the Equipment Committee.

**Note:** Approval certifies only that the submitted samples of the brand approved have been found to conform to the specifications in the laws with a high degree of regularity. Balls tend to vary in mass production and Associations are recommended to make their own arrangements with the wholesaler concerned to ensure the availability of supplies approaching the standard certified as attained by the samples of any given brand.

#### 4. THE RACKET

The racket may be of any size, shape, or weight. Its surface shall be dark coloured and matt. The blade shall be of wood, continuous, of even thickness, flat and rigid. If the blade is covered on either side, this covering may be either—

of plain, ordinary pimped rubber, with pimples outward, of a total thickness of not more than 2 mm.; or—

of "sandwich", consisting of a layer of cellular rubber surfaced by plain ordinary pimped rubber—turned outwards or inwards—in which case the total thickness of covering of either side shall not be more than 4 mm.

When rubber is used on both sides of a racket, the colour shall be similar: when wood is used for either side, or for both sides, it should be dark, either naturally, or by being stained (not painted) in such a way as not to change the friction-character of its surface.

**Note:** The part of the blade nearest the handle and gripped by the fingers may be covered with cork or other materials for convenience of grip; it is to be regarded as part of the handle.

**Note:** If the reverse side of the racket is never used for striking the ball, it may all be of cork or any other material convenient for gripping. The limitation of racket cover materials refers only to the striking surface. A stroke with a side covered with cork or any other gripping surface would, however, be illegal and result in a lost point.

### **Specification: Pimpled Rubber**

A single covering with pimples evenly distributed not fewer than 10 nor more than 50 to the square centimetre (65-325 to the square inch) on rubber which, whether natural or synthetic, is non-cellular, and of which the total thickness includes the height of the pimples and adhesive.

### **Specification: Dark Colour**

Colours that give a "Y" value under illuminant A of less than 30 per cent. according to the CIE system may be considered sufficiently dark, either for clothing or rackets. A colour card is available for guidance.

As well as discouraging the wearing of light materials or use of light coloured racket surfaces in actual play, Associations should take positive steps, by an approach to manufacturers, and dealers, and by approving dark materials, to ensure that uniform or otherwise suitable types of wear, and racket surfaces that comply with the specification, are available.

## **5. THE ORDER OF PLAY: DEFINITIONS**

The player who first strikes the ball during a rally shall be termed the "server".

The player who next strikes the ball during a rally shall be termed the "receiver".

The server shall first make a good service, the receiver shall then make a good return, and thereafter server and receiver shall each alternately make a good return.

The period during which the ball is in play shall be termed a "rally".

A rally the result of which is not scored shall be termed a "let".

A rally the result of which is scored shall be termed a "point".

## **6. A GOOD SERVICE**

The ball shall be placed on the palm of the free hand, which must be stationary, open and flat, with the fingers together and the thumb free. The free hand, while in contact with the ball in service shall at all times be above the level of the playing surface.

Service shall then begin by the server projecting the ball by hand only, without imparting spin, nearly vertically upwards so that the ball is visible at all times to the umpire and so that it visibly leaves the palm.

As the ball is then descending from the height of its trajectory it shall be struck so that it touch first the server's court and then, passing directly over or around the net, touch the receiver's court. At the moment of impact of the racket on the ball in service, the ball shall be behind the end-line of the server's court or an imaginary extension thereof.

**Note: Missed Service:** Note that, if a player, in attempting to serve, miss the ball altogether, it is a lost point because the ball was in play from the moment it left his hand and a good service has not been made of the ball already in play.

### **Definitions for Above:—**

'Struck':

'Struck' means 'hit with the racket or with the racket hand' which, for this purpose, shall be understood as included in the

racket. The racket hand is the hand carrying the racket; the free open hand is the hand not carrying the racket. Therefore, a return effected with the hand alone, after dropping the racket, is 'not good' for it is no longer the 'racket hand'; a return effected by the racket alone, after it has slipped or been thrown from the hand, is likewise 'not good', for the ball is not 'struck'.

'Touching the Court' (Edge Balls):

The phrase 'Table Surface' (comprising the 'courts') is to be interpreted as including the top edges of the table-top, and a ball in play which strikes these latter is therefore good and still in play; though if it strikes the side of the table-top below the edge, it becomes dead and counts against the last striker.

The direction in which the ball is travelling since it was last struck, its spin, and the direction in which it rebounds from the edge can all help to distinguish between a 'good' ball that has touched the edge and a 'bad' ball that has made contact below the edge. If the point of contact of the ball has occurred at the end or side of the table away from the striker it must nearly always have been a 'good' touch; only exceptionally heavy spin could have brought about a contact completely below the edge. If the contact has occurred on the same side of the table as that from which the ball was struck, it may, however, have occurred below the edge and if the rebound in this case is directly downward this is a sign that the contact must have been 'bad', i.e., against the side, below the edge.

'Over or around the Net':

If the ball, in passing over the net, or around the net, touch it or its supports it shall, nevertheless, be considered to have passed directly, except for the purpose of Law 6. 'Around the net' shall be considered as being under or around the projection of the net and supports outside the side line. The net end should be close enough to the post to prevent the ball from passing between net and post and to pass so would not constitute 'around the net'.

The free hand, while in contact with the ball in service, shall be open, with the fingers together, thumb free and the ball resting on the palm without being cupped or pinched in any way by the fingers.

### **Warning**

It is the responsibility of the server to serve so that the correctness of his service can be checked by the umpire. If the server is serving so that the umpire's view is obstructed, the umpire shall warn him and, on any subsequent occasion on which his view is obstructed, and he may have doubt about the correctness of the service, the umpire shall call a fault.

### **Exception**

Strict observance of the prescribed method of service may be waived where the umpire is notified, before play begins, that compliance by the player in question is prevented by physical disability.

At the moment of the impact of the racket on the ball in service, the ball shall be behind the end line of the server's court or an imaginary extension thereof.

## 7. A GOOD RETURN

A ball having been served or returned in play shall be struck so that it pass directly over or around the net and touch directly the opponent's court, provided that, if the ball, having been served or returned in play, return with its own impetus over or around the net, it may be struck, while still in play, so that it touch directly the opponent's court.

## 8. IN PLAY

The ball is in play from the moment at which it is projected from the hand in service until:—

It has touched one court twice consecutively.

It has, except in service, touched each court alternately without having been struck by the racket intermediately.

It has been struck by either player more than once consecutively.

It has touched either player or anything that he wears or carries, except his racket or his racket hand below the wrist.

On the volley it come in contact with the racket or the racket hand below the wrist.

It has touched any object other than the net, supports, or those referred to above.

## 9. A LET

The rally is a let. —

If the ball served in passing over the net touch it or its supports, provided the service either be otherwise good or be volleyed by the receiver.

### Definition: The Volley

If the ball in play come into contact with the racket or racket hand, not yet having touched the playing surface on one side of the net since last being struck on the other side, it shall be said to have been volleyed.

If a service be delivered when the receiver is not ready, provided always that he may not be deemed to be unready if he attempt to strike at the ball.

If either player be prevented by an accident, not under his control, from serving a good service or making a good return.

If either player lose the point owing to an accident not within his control.

### Ball Fractured in Play

If the ball split or become otherwise fractured in play, affecting a player's return, the rally is a let. It is the umpire's duty to stop play, recording a let, when he has reason to believe that the ball in play is fractured or imperfect; and to decide those cases in which the faulty ball is clearly fractured in actually going out of play, and in no way handicaps the player's return, when the point should be scored. In all cases of doubt, however, he should declare a let.

## Fixtures

A moving spectator, a neighbouring player, a sudden noise, i.e., any neighbouring object in movement (except a partner) should be regarded as an accident not under control, interference from which implies a let. A stationary spectator, fixed seating, the umpire, the light, a nearby table, a continuous sound of even volume, i.e., any relatively constant or motionless hazard, should not be so regarded, and complaint against interference from it during play should be regarded as void.

If it be interrupted as provided in Law 6.

If it be interrupted for application of the Expedite System as provided in 7.

## 10. A POINT

Except as provided in Law 6, either player shall lose a point:

If he fail to make a good service.

If a good service or a good return having been made by his opponent, he fail to make a good return.

If he, or his racket, or anything that he wears or carries touch the net or its supports while the ball is in play.

If he, or his racket, or anything that he wears or carries, move the playing surface while the ball is in play.

If his free hand touch the playing surface while the ball is in play.

If, before the ball in play shall have passed over the end lines or side lines not yet having touched the playing surface on his side of the table since being struck by his opponent, it come in contact with him or with anything that he wears or carries.

If at any time he volley the ball (See Definition 6).

## Expedite System

If a game be unfinished fifteen minutes after it has begun, the rest of that game, and the remaining games of the match shall proceed under the Expedite system. Thereafter, if the service and twelve following strokes of the server are returned by good returns of the receiver, the server shall lose the point.

## 11. A GAME

A game shall be won by the player who first wins 21 points, unless both players shall have scored 20 points, when the winner of the game shall be he who first wins two points more than his opponent.



## **12. A MATCH**

A match shall consist of one game or the best of three or best of five games.

play shall be continuous throughout, except that either opposing player is entitled to claim a repose period of not more than five minutes duration between the third and fourth games of a five-game match.

**Note:** This rule defines a contest between two players or pairs. A contest consisting of a group of individual matches between two sides is usually distinguished as a 'team match'.

## **13. THE CHOICE OF ENDS AND SERVICE**

The choice of ends and the right to be server or receiver in every match shall be decided by toss, provided that, if the winner of the toss choose the right to be server or receiver, the other player shall have the choice of ends, and vice-versa, and provided that the winner of the toss may, if he prefer it, require the other player to make the first choice.

## **14. THE CHANGE OF ENDS AND SERVICE**

### **Ends**

The player who started at one end in a game shall start at the other in the immediately subsequent game, and so on, until the end of the match. In the last possible game of the match the players shall change ends when first either player reaches the score of 10.

### **Service**

After five points the receiver shall become the server, and the server the receiver, and so on after each five points until the end of the game or the score 20-all, or if the game be interrupted under the Expedite System. From the score 20-all, or if the game be interrupted under Expedite System, the service shall change after each point until the end of the game.

The player who served first in a game shall be receiver first in the immediately subsequent game and so on until the end of a match.

## **15. OUT OF ORDER OF ENDS OR SERVICE**

### **Ends**

If the players have not changed ends when ends should have been changed, the players shall change ends as soon as the mistake is discovered, unless a game has been completed since the error, when the error shall be ignored. In any circumstances, all points scored before the discovery shall be reckoned.

### **Service**

If a player serve out of his turn, play shall be interrupted as soon as the mistake is discovered and shall continue with that player serving who, according to the sequence established at the beginning of the match, should be the server at the score that has been reached. In any circumstances, all points scored before the discovery shall be reckoned.

## DOUBLES

**Note:** The doubles centre line may be permanently marked in full length on the table. This is a convenience and in no way invalidates the table for singles play.

The part of the table surface on the nearer side of the net and the right of the centre line in respect to the server shall be called the server's right half-court, that on the left in respect to him the server's left half-court. The part of the table surface on the farther side of the net and the left of the centre line in respect to the server shall be called the receiver's right half-court, that on the right in respect to the server the receiver's left half-court.

### 18. A GOOD SERVICE

The service shall be delivered as otherwise provided in Law 6 and so that it touch first the server's right half-court or the centre line on his side of the net, and then passing directly over or around the net, touch the receiver's right half-court or the centre line on his side of the net.

### 19. THE ORDER OF PLAY

The server shall first make a good service, the receiver shall then make a good return, the partner of the server shall then make a good return, the partner of the receiver shall then make a good return, the server shall then make a good return and thereafter each player alternately in that sequence shall make a good return.

### 20. THE CHOICE OF THE ORDER OF PLAY

The pair who have the right to serve the first five services in any game shall decide which partner shall do so. In the first game of a match the opposing pair shall then decide similarly which shall be the first receiver. In subsequent games the serving pair shall choose their first server and the first receiver will then be established automatically to correspond with the first server as provided in 6.

### 21. THE ORDER OF SERVICE

Throughout each game, except as provided in the second paragraph, the first five services shall be delivered by the selected partner of the pair who have the right to do so and shall be received by the appropriate partner of the opposing pair. The second five services shall be delivered by the receiver of the first five services and received by the partner of the server of the first five services. The third five services shall be delivered by the partner of the server of the first five services and received by the partner of the receiver of the first five services. The fourth five services shall be delivered by the partner of the receiver of the first five services and received by

the server of the first five services. The fifth five services shall be delivered as the first five services. And so on, in sequence, until the end of the game or the score 20-all or the introduction of the Expedite System, when the sequence of serving and receiving shall be uninterrupted, but each player shall serve only one service in turn until the end of the game.

In the last possible game of a match when first either player reaches the score 10 the receiving pair must alter its order of serving.

In each game of a match the initial order of receiving shall be opposite to that in the preceding game.

## **22. OUT OF ORDER OF RECEIVING**

If a player act as receiver out of his turn play shall be interrupted as soon as the mistake is discovered and shall continue with that player receiving who, according to the sequence established at the beginning of the game or at the score 10 if that sequence has been changed under Law 6, should be receiver at the score which has been reached. In any circumstances all points scored before the discovery shall be reckoned.

## **GENERAL**

### **23. CLOTHING**

Players shall not wear white or light coloured clothing which might tend to distract or unsight the opponent. Any badge or lettering on a playing garment must not be so large or conspicuous as to break disturbingly its uniform dark colour. The decision as to the offence under this rule shall be with the referee.

Associations are recommended strongly to discourage practice before the public in non-playing dress or footwear.

### **24. FLOORING. RECOMMENDATION**

Flooring should be not of stone or linoleum, but of hard, non-slippery rigid wood, not white or brightly reflecting. Caution should be observed in accepting composition flooring, for though this may give a fast game it is generally harder on the feet than wood.

### **25. PLAYING SPACE**

At World Championships, Open International Championships, and International Matches where not otherwise agreed, the minimum playing space for each table shall be 14 metres (46 feet) long, 7 metres (23 feet) wide, and 4 metres (13 feet 2 inches) high. It is recommended that at all other events the playing space should, if less, be as near this minimum as practicable and in any case not less than 12 metres (39 feet) by 6 metres (19½ feet).

Where there is more than one table these should be set side by side and not, where this is avoidable, one behind the other.

### **26. SURROUNDS. RECOMMENDATION**

Dark surrounds about 75 cm. (2 ft. 6 ins.) high should delimit the playing space, separating each match from any other match and from the public. The surrounds should be stable, but light enough to fall without injury to a player who may run into them.

## 27. BACKGROUND. RECOMMENDATION

The background should for preference be of a uniform dark green or another uniform dark colour, not light (or patchy) as this tends to unsight the players. Where there are spectators in the background, it is preferable for the light there to be subdued compared with that over the playing area and in no circumstances should naked lights at eye level or back-lighting by daylight through windows be present in the background.

## 28. LIGHTING

Measured at table height, the light shall be at least 400 lux in strength uniformly over the table, and not less than half the table strength over any other part of the playing area.

The light source shall be not less than 4 metres from the ground.

While general lighting alone is permissible if it gives this prescribed strength, wherever practicable a system providing special lighting over the table and playing area, and a contrasting relative darkness or less light outside the playing area is preferable in the interests of both players and spectators.

It is preferable to avoid mixed daylight and artificial light.

Fluorescent lighting may cause difficulties where it is not three-phase.

---

---

## SPECIAL ATTENTION

All Secretaries and Players should pay particular attention to Rule 8 (c). The fine referred to in this Rule will, for this Season, be 2/- (10NP.)

## UMPIRES WANTED

The National Umpires and Referees Committee of the S.T.T.A. **urgently** require more Umpires.

Application for Test Papers, etc., should be made to the S.T.T.A. Secretary—

J. McCORMACK, Esq.,

2 Bramdean Place, Edinburgh, EH10 6JS.

OR

The N.U.R.C. Secretary—

L. C. COOK, Esq.,

16 Highfield Crescent, Linlithgow, W. Lothian.

## COACHING

With the opening of Meadowbank it is hoped that we will be able to provide coaching for League members on several evenings each week. In order to spread the load of this work it will be essential to have a large group of players, of experience, willing to devote some of their spare time to help. In addition to this evening coaching we will also be providing courses for selected players on Saturdays and it is hoped to run courses in some Edinburgh Secondary Schools, starting late October 1970.

As you can see, the intentions are good. If you can give one evening per month to help us in this scheme please write to:

B. DAWSON, ESQ.,

20 Mauricewood Park,

Penicuik.

## TOURNAMENT CALENDAR 1970/71

EVENT	VENUE	DATE
Meadowbank Table Tennis Weekend	Edinburgh	Sat./Sun. 26th/27th September.
North of Scotland Open	Aberdeen	Sat. 24th October.
Midlands Open	Dundee	Sat. 14th November.
East of Scotland Open	Edinburgh	Sun. 22nd November.
Scottish Closed		Sat. 12th December.
Edinburgh Open	Edinburgh	Sun. 17th January.
West of Scotland Open	Glasgow	Sat. 23rd January.
North Lanarkshire Open		Sun. 14th February.
Central Open		Sun. 28th February.
Scottish Open	(Edinburgh)	Sat./Sun. 13th/14th March

## FIXTURE LIST

Commencing Week	A	B	C	D	E	F	G	H	I	J	K	L	M	N	O	P
1970																
SEPT. 21	P	O	N	M	L	K	J	I	Ha	Ga	Fa	Ea	Da	Ca	Ba	Aa
" 28	Oa	Na	Ma	La	Ka	Ja	Ia	Pa	G	F	E	D	C	B	A	H
Oct. 5	N	M	L	K	J	I	H	Ga	Fa	Ea	Da	Ca	Ba	Aa	Pa	O
" 12	Ma	La	Ka	Ja	Ia	Ha	P	F	E	D	C	B	A	O	Na	Ga
" 19	L	K	J	I	H	G	Fa	Ea	Da	Ca	Ba	Aa	Oa	Pa	M	N
" 26	Ka	Ja	Ia	Ha	Ga	P	E	D	C	B	A	O	N	Ma	La	Fa
Nov. 2	J	I	H	G	F	Ea	Da	Ca	Ba	Aa	Oa	Na	Pa	L	K	M
" 9	Ia	Ha	Ga	Fa	P	D	C	B	A	O	N	M	La	Ka	Ja	Ea
" 16	H	G	F	E	Da	Ca	Ba	Aa	Oa	Na	Ma	Pa	K	J	I	L
" 23	Ga	Fa	Ea	P	C	B	A	O	N	M	L	Ka	Ja	Ia	Ha	Da
" 30	F	E	D	Ca	Ba	Aa	Oa	Na	Ma	La	Pa	J	I	H	G	K
Dec. 7	Ea	Da	P	B	A	O	N	M	L	K	Ja	Ia	Ha	Ga	Fa	Ca
" 14	D	C	Ba	Aa	Oa	Na	Ma	La	Ka	Pa	I	H	G	F	E	J
" 21	Ca	P	A	O	N	M	L	K	J	Ia	Ha	Ga	Fa	Ea	Da	Ba
1971																
Jan. 4	B	Aa	Oa	Na	Ma	La	Ka	Ja	Pa	H	G	F	E	D	C	I
" 11	Pa	Oa	Na	Ma	La	Ka	Ja	Ia	H	G	F	E	D	C	B	A
" 18	O	N	M	L	K	J	I	P	Ga	Fa	Ea	Da	Ca	Ba	Aa	Ha
" 25	Na	Ma	La	Ka	Ja	Ia	Ha	G	F	E	D	C	B	A	P	Oa
Feb. 1	M	L	K	J	I	H	Pa	Fa	Ea	Da	Ca	Ba	Aa	Oa	N	G
" 8	La	Ka	Ja	Ia	Ha	Ga	F	E	D	C	B	A	O	P	Ma	Na
" 15	K	J	I	H	G	Pa	Ea	Da	Ca	Ba	Aa	Oa	Na	M	L	F
" 22	Ja	Ia	Ha	Ga	Fa	E	D	C	B	A	O	N	P	La	Ka	Ma
Mar. 1	I	H	G	F	Pa	Da	Ca	Ba	Aa	Oa	Na	Ma	L	K	J	E
" 8	Ha	Ga	Fa	Ea	D	C	B	A	O	N	M	P	Ka	Ja	Ia	La
" 15	G	F	E	Pa	Ca	Ba	Aa	Oa	Na	Ma	La	K	J	I	H	D
" 22	Fa	Ea	Da	C	B	A	O	N	M	L	P	Ja	Ia	Ha	Ga	Ka
" 29	E	D	Pa	Ba	Aa	Oa	Na	Ma	La	Ka	J	I	H	G	F	C
Apr. 5	Da	Ca	B	A	O	N	M	L	K	P	Ia	Ha	Ga	Fa	Ea	Ja
" 12	C	Pa	Aa	Oa	Na	Ma	La	Ka	Ja	I	H	G	F	E	D	B
" 19	Ba	A	O	N	M	L	K	J	P	Ha	Ga	Fa	Ea	Da	Ca	Ia

### Instructions on the Use of these Tables

Determine the Code Letter of your team. In the column headed by your team's Code Letter, find the capital letter listed against the date required; this capital letter is the Code Letter of your opponents. If a small "a" follows the letter, your team is away from home.

ALL MATCH RESULTS CARDS TO BE SENT TO:—

(MATCH SECRETARY) A. HAY, ESQ.,

71 TRAQUAIR PARK WEST,  
EDINBURGH EH12 7AN.

**“ IMPORTANT ”**  
**NOTICE TO SECRETARIES**

As will be seen from the fixture list it has been necessary to extend the playing season by 4 weeks.

This means that the season will now finish on Friday, 23rd April, 1971, and it will now be IMPOSSIBLE to allow any extension to complete unplayed matches.

It is therefore IMPERATIVE that secretaries ensure that postponed matches are played AS SOON AS POSSIBLE after the original date.

Any matches not completed by 23rd April, 1971, will be forfeited.

Code	DIVISION I	Home Night	Code	DIVISION II	Home Night
A	Gambit III	Tues.	A	Civil Service I	Tues.
B	Murrayfield II	Wed.	B	Century Ins. I	Fri.
C	Register House I	Tues.	C	North Merchiston II	Wed.
D	Musselburgh I	Wed.	D	Musselburgh II	Thurs.
E	McTaggart Scott I	Tues.	E	Post Office I	Tues.
*F	Y.M.C.A. II	Tues.	F	Muirhouse II	Tues.
G	Muirhouse I	Thurs.	G	Murrayfield III	Tues.
H	Crudens I	Tues.	*H	Y.M.C.A. IV	Thurs.
I	Gambit I	Tues.	I	Murrayfield IV	Thurs.
J	Murrayfield I	Fri.	J	Allan Street	Tues.
K	North Merchiston I	Wed.	K	Pentland Y.C. I	Tues.
L	Gambit II	Fri.	L	Police I	Tues.
*M	University I	Tues.	M	Ferranti	Tues.
*N	Y.M.C.A. I	Wed.	N	Post Office II	Mon.
O	McTaggart Scott II	Wed.	*O	H.M. Prison	Thurs.
*P	Y.M.C.A. III	Thurs.	P	Crudens II	Tues.

\* See Club Details.

Code	DIVISION III	Home Night	Code	DIVISION IV	Home Night
A	Beechwood	Tues.	A	North Merchiston III	Thurs.
B	Murrayfield V	Wed.	B	Clermiston Y.M.C.A.	Thurs.
C	Royston I	Thurs.	C	Civil Service III	Thurs.
D	Gambit IV	Fri.	D	Police III	Tues.
E	Civil Service II	Mon.	*E	University III	Tues.
F	Post Office III	Wed.	F	McTaggart Scott V	Fri.
G	McTaggart Scott III	Wed.	G	FREE WEEK	
H	Maccabi I	Thurs.	H	Post Office IV	Mon.
I	Gambit V	Thurs.	I	Post Office V	Thurs.
J	Police II	Mon.	J	Preston Lodge School	Fri.
K	Royston II	Thurs.	K	Register House II	Wed.
L	Crudens III	Wed.	L	Royston III	Thurs.
M	McTaggart Scott IV	Thurs.	M	Tynecastle I	Thurs.
N	Tartan Club I	Wed.	N	Muirhouse IV	Tues.
*O	University II	Fri.	O	Muirhouse III	Wed.
*P	Y.M.C.A. V	Tues.	P	FREE WEEK	

\* See Club Details.

Code	DIVISION V	Home Night	Code	DIVISION VI	Home Night
A	Brown Bros.	Wed.	A	Ainslie Park I	Tues.
B	12th Boys' Brigade I	Thurs.	B	Police II	Mon.
C	Telford College I	Wed.	C	Phoenix Y.C.	Wed.
D	Customs and Excise	Mon.	D	Fettes-Loretto B.C.	Thurs.
E	Central Garage	Mon.	E	Tynecastle III	Thurs.
F	F.E.C.	Thurs.	F	Gracemount I	Wed.
*G	University IV	Fri.	G	Murrayfield VII	Mon.
H	FREE WEEK		H	Pleasance I	Fri.
I	Pentland Y.C. II	Thurs.	I	Pleasance II	Thurs.
J	FREE WEEK		J	Gambit VI	Tues.
K	Sighthill C.C.	Tues.	K	Telford College II	Wed.
L	Century Insurance II	Tues.	L	9th Boys' Brigade	Tues.
M	Tynecastle II	Fri.	M	Post Office VII	Tues.
N	Maccabi II	Mon.	N	M.P.B.W.	Thurs.
O	Murrayfield VI	Tues.	O	FREE WEEK	
P	Post Office VI	Wed.	P	FREE WEEK	

\* See Club Details.



Code	DIVISION VII	Home Night
A	Post Office VIII	Thurs.
B	3rd Boys' Brigade	Tues.
C	12th Boys' Brigade II	Wed.
D	28th Boys' Brigade	Tues.
E	Craigmillar B.C.	Thurs.
F	Tartan Club II	Tues.
G	Rover Scouts	Wed.
*H	Y.M.C.A. VI	Wed.
I	Ainslie Park II	Tues.
J	Murrayfield VIII	Fri.
*K	Scottish Paraplegic Assoc.	Mon.
L	Gracemount II	Mon.
M	Pleasance III	Tues.
N	Ministry of H. and S.S.	Wed.
O	Muirhouse V	Thurs.
P	FREE WEEK	

\* See Club Details.

## EDINBURGH CUP KNOCK-OUT HANDICAP COMPETITION

**CLOSING DATE FOR ENTRY — FRIDAY, 16th OCTOBER.**

**ALL** teams registered have been included in the draw.

The fee for the competition is 2/6 per team, and secretaries are asked to pay the fees to Mrs P. Kerr as soon as possible, and in any case before the closing date (see above).

The League Rule that players must be registered in playing strength, does **NOT** apply.

Handicaps will be notified to club secretaries as soon as possible. Ties should not be arranged until handicaps are notified.

All teams of any club which has not paid the required fee by the closing date **will be scratched**, but the Committee earnestly desire to extend the popularity of this competition and suggest that secretaries should co-operate to play this competition as far as possible as set out in the draw shown.

If despite this, a club wishes not to enter all its teams, the lowest team by number (e.g. Muirhouse IV not Muirhouse I) will be withdrawn from the competition.

If a Club wishes to enter more teams in the cup than in the league, this will be permitted, provided that Mrs Kerr is notified before the closing date.

# EDINBURGH CUP KNOCK-OUT HANDICAP COMPETITION

## GENERAL RULES.

1. Players must be registered in accordance with League Rules.
2. A player may only play for one team throughout the competition.
3. A player not on the handicap list shall play off -12 until the competition Committee can assess his/her standard.
4. The competition Committee may revise handicaps where deemed necessary.
5. Teams shall consist of three players.
6. A match shall consist of 9 best of three set games.
7. The "Home" Team (as defined on draw sheet) shall offer their opponents at least two dates within the allotted period, giving at least four days notice.
8. The visiting team shall be deemed to have defaulted should they not accept one of the dates offered and the match will be awarded to the home side.
9. Players not available for play 30 minutes later than agreed starting time shall forfeit their games.
10. A score card (showing actual scores) should be forwarded to Mrs P. Kerr, 46 Barony Terrace, Edinburgh, EH12 8RD, immediately following the tie. Should the result of any tie not be received by Mrs Kerr within 48 hours of the closing date of the respective round, the away team may be awarded the tie.
11. Any dispute shall be submitted, in writing, to Mr Brewerton to be considered by the Competition Committee whose decision shall be final.
12. MINUS handicaps are added to 21;  
(b) PLUS handicaps are within 21 points as follows:—  
Plus v Plus:—Deduct one handicap from the other, and play to 21, e.g. +4 play +12. Play begins at 0-8 and is played to 21 points.  
Minus v Minus:—Deduct one handicap from the other, and play to 21 plus the difference, e.g. -12 plays -4. Play begins at 0-8 and is played to 29 points.  
Minus v Plus:—Add the plus to the minus handicap and play to 21 plus the minus handicap, e.g. -12 plays +4. Play begins 0-16 and is played to 33 points.  
Scoring:—The winner of a game must always score two points more than his opponent, e.g. in a game of 33 up, deuce should be called at 32 all.
13. When a third set is necessary, ends will be changed in the third set when either player has scored half the points necessary for him (or her) to win the set.  
e.g. -8 plays +8  
+8 plays off 16 to 29 and -8 plays off scratch.  
Players will change ends when either  
(a) +8 reaches 22 or  
(b) -8 reaches 14
14. In the event of the score going to deuce the rule on page 30 applies.
15. Players in teams eligible for or who have played in the Scottish Cup are not eligible for the Edinburgh Handicap Cup in the same season.

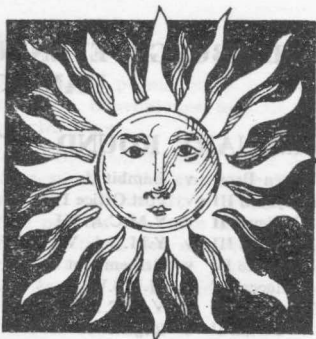
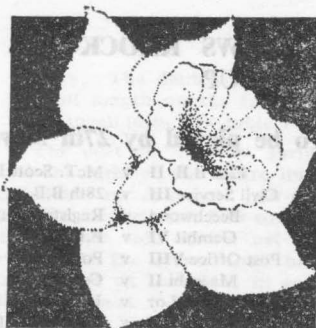
# EDINBURGH EVENING NEWS KNOCK-OUT HANDICAP CUP

## PRELIMINARY ROUND — To be played by 27th November

A	Brown Bros.	v	Gambit II	12th B.B. II	v	McT. Scott III	S
B	Royston III	v	Post Office IV	Civil Service III	v	28th B.B.	T
C	Crudens II	v	Y.M.C.A. III	Beechwood	v	Register House I	U
D	N. Mer'ston III	v	Y.M.C.A. VI	Gambit VI	v	F.E.C.	V
E	Police IV	v	Gracemount II	Post Office VIII	v	Police II	W
F	Maccabi I	v	M.P.B.W.	Maccabi II	v	Century Ins. I	X
G	Tynecastle III	v	Y.M.C.A. I	Fet-Lor	v	University I	Y
H	Tartan II	v	Register House II	Post Office III	v	Y.M.C.A. II	Z
I	3rd B.B.	v	Murrayfield III	Preston Lodge Sch.	v	Murrayfield VI	AA
J	9th B.B.	v	University II	Muirhouse II	v	Murrayfield I	BB
K	N. Merchiston II	v	Tartan I	S.P.A.	v	Muirhouse IV	CC
L	Murrayfield II	v	Post Office VII	Pleasance III	v	Muirhouse III	DD
M	Post Office I	v	Portobello School	Central Garage	v	N. Merchiston I	EE
N	Telford College	v	Musselburgh I	H.M. Prison	v	Royston I	FF
O	Murrayfield VII	v	Clermiston Y.M.C.A.	Y.M.C.A. IV	v	Tynecastle II	GG
P	Musselburgh II	v	Pleasance I	Customs and Excise	v	McT. Scott I	HH
Q	Tynecastle I	v	Gracemount I	Crudens I	v	12th B.B. I	II
R	Post Office V	v	Pentland I	Murrayfield VIII	v	McT. Scott II	JJ

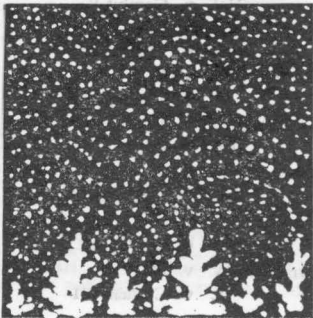
## ROUND 1 — To be played by 31st December

Sighthill	v	DD	Muirhouse I	v	V
FF	v	Gambit IV	G	v	Civil Service II
Police III	v	GG	Ainslie Park II	v	Y
HH	v	Gambit V	Z	v	Royston II
Y.M.C.A. V	v	AA	Post Office II	v	EE
T	v	Allan Street	II	v	Century Insurance II
University III	v	E	Muirhouse V	v	F
I	v	McTaggart Scott V	JJ	v	Post Office VI
Pentland II	v	H	University IV	v	CC
BB	v	Police I	X	v	Ferranti
Civil Service I	v	R	Murrayfield V	v	Craigmillar
S	v	Pleasance II	D	v	U
Ainslie Park I	v	N	C	v	O
W	v	McTaggart Scott IV	P	v	K
Murrayfield IV	v	M	A	v	Q
L	v	Crudens III	J	v	B



**A  
BANK  
FOR  
ALL  
SEASONS**

**The Royal Bank of Scotland**



# Edinburgh and District Table Tennis League

---

## ALLAN STREET PRESENTATION (HANDICAP) TOURNAMENT

---

To be held in NORTH MERCHISTON BOYS' CLUB, WATSON CRESCENT, EDINBURGH 11, on SUNDAY, 28th MARCH, 1971.

Starting at 10 a.m.

Hon. Referee—B. Dawson, Esq.

Entry is restricted to players registered with the Edinburgh & District League with the exception of those playing in the first division of that league.

### REGULATIONS

1. All matches shall be played under current S.T.T.A. rules. Time Limit Rule will be imposed when necessary. Officially approved balls will be used.

2. The entry will be restricted to the following numbers in each event.

SINGLES—first 128 received. DOUBLES—first 64 pairs received. JUNIOR SINGLES—first 64 received. Each Club Secretary will be notified of members who have been accepted and of those who have not. Competitors should check with Club Secretary before the tournament.

3. All players must be prepared to play as and when required on any table. PLAYERS ABSENT WHEN CALLED UPON TO PLAY WILL BE SCRATCHED.

4. The losing player must hand in the tie slip and ball to the official table.

5. Each competitor must complete an official entry form which must be returned to Mrs P. Kerr, 46 Barony Terrace, Edinburgh, EH12 8RD, not later than Friday, 12th March, 1971.

6. The draw will be made on Monday, 15th March, 1971.

7. Light refreshments will be available at the tournament.

## HANDICAPS

**PLAYERS HANDICAPS** will be based on the list produced for the Edinburgh Evening News Handicap Cup. It must not be assumed that the handicaps listed for the cup will necessarily remain the same.

**DOUBLES EVENT:** The aggregate of the pairs handicaps, divided by two will be the doubles handicap. If the result of the calculation is a minus and a half, the handicap will be rounded up to the next whole number. If the result is a plus and a half, it will be rounded down to the next whole number.

**SCORING:** MINUS handicaps are added to 21.

PLUS handicaps are within 21 points as follows:—

**PLUS V. PLUS:**—Deduct one handicap from the other and play to 21. E.G. + 4 plays + 12—Play begins at 0-8 and is played to 21 points.

**MINUS V. MINUS:**—Deduct one handicap from the other and play to 21 plus the difference. E.G. — 12 plays — 4—Play begins at 0-8 and is played to 29 points.

**MINUS V. PLUS:**—Add the plus to the minus handicap and play to 21 plus the minus handicap. E.G. — 12 plays + 4. Play begins 0-16 and is played to 33 points.

The winner of the game must always score two points more than his opponent. E.G. —In a game of 33 up, deuce should be called at 32 all. The rule governing the score at which to change ends when a third set is necessary is as stated on page 27 of the League Handbook.

---

---

# LEADING INDIVIDUAL AVERAGES—1968 - 1969

## DIVISION ONE

	W	L
R. Kerr, Gambit I	72	0
E. Sutherland, Gambit I	66	0
P. Forker, Gambit I	74	1
I. Donald, Register House	57	15
*P. Shanley, Gambit III	54	18
W. Gibbs, Gambit II	44	19
R. Rutherford, Musselburgh	54	24
J. O'Malley, Y.M.C.A.	37	17
A. Penman, Musselburgh	47	25
G. Brewerton, Muirhouse I	48	27
A. Black, Y.M.C.A. II	41	25
D. Hunter, Murrayfield I	48	30
R. Thomas, Murrayfield I	46	29
I. Holt, Y.M.C.A. I	42	27

## DIVISION TWO

	W	L
*A. McKean, N. Merchiston I	73	5
J. Bogie, Crudens II	69	9
D. Miller, North Merchiston I	62	13
J. Furness, McTaggart Scott I	59	13
W. Mather, Crudens I	49	14
D. Dalgleish, McT. Scott I	60	18
B. Dawson, Post Office I	54	21
D. McIntosh, Allan Sereet	48	21
A. Taylor, Murrayfield IV	50	22
J. Dempster, McT. Scott II	50	22
M. Larter, North Merchiston I	49	23
N. Celinski, McT. Scott I	46	29
R. Wright, Muirhouse II	45	30

## DIVISION THREE

	W	L
_____, H.M. Prison	54	12
*J. Murdoch, Century Ins. I	54	15
W. Addison, Royston I	49	14
R. Jack, North Merchiston II	55	17
P. Vinestock, Maccabi I	47	16
J. Kelman, Ferranti	58	20
_____, H.M. Prison	54	24
G. Loughlin, Muirhouse III	44	22
P. Green, McT. Scott IV	43	23
D. Montgomery, Y.M.C.A. IV	33	13
W. Rennie, Y.M.C.A. IV	44	25
C. Oliver, McT. Scott III	48	30

## DIVISION FOUR

	W	L
*S. Mackenzie, N. Merch. III	66	12
W. McQuat, Beechwood	62	16
W. Forrest, Civil Service II	59	16
K. Fergus, Crudens III	57	18
D. Griffiths, Crudens III	46	17
B. Gollogly, Gambit V	50	22
E. Caw, Beechwood	52	23
Ch. McBeath, Gambit V	47	22
A. Aikman, McT. Scott V	40	20
L. Mollison, Civil Service III	44	22
E. Brady, Post Office III	38	22
R. Frame, Civil Service III	38	22
N. Young, Police III	45	27
I. Hislop, Muirhouse IV	37	23
G. Mather, Crudens III	44	28
R. Armstrong, Preston Lodge	33	21

### DIVISION FIVE

	W	L
*D. Small, Tynecastle B.C. I	71	4
G. Thomson, Y.M.C.A. V	68	4
D. Fletcher, Post Office IV	59	7
J. McFarlane, Y.M.C.A. V	44	7
K. Hatfield, Y.M.C.A. V	49	11
C. Baird, Register House II	61	14
D. Hall, Tynecastle B.C. I	61	14
L. Grant, Century Ins. II	56	19
A. Redpath, Post Office IV	51	18
D. Nicol, Register House II	41	16
J. Tully, Register House II	51	21
R. Delworth, Lothianburn	34	17
J. Ballantyne, Brown Bros.	49	26
A. Linton, Pentland C.C.	47	28
G. Knight, Century Ins. II	33	21

### DIVISION SIX

	W	L
*D. Ward, Post Office V	52	2
J. Fortune, Post Office V	50	4
C. Mendick, Maccabi II	44	4
B. Wilson, Pleasance B.C.	38	4
I. McDougall, Loanhead Y.C.	43	8
D. Smith, E.C.T.	45	9
M. Dick, Post Office V	38	13
H. Yorston, E.C.T.	29	10
T. Cheam, E.C.T.	33	12
R. Dobson, Deckers	32	16
S. Crummy, Portobello School	30	18

### DIVISION SEVEN

	W	L
B. Griffiths, Telford College	48	0
A. Grant, Ainslie Park	51	3
(L. Mitchell, Cl'mist'n YMCA	62	7
*(D. Mitchell, Cl'mist'n YMCA	64	8
J. Fraser, Telford College	53	7
D. Mackenzie, C'ston YMCA	50	7
D. Richardson, 12th B.B.	51	18
A. Hunter, S'hill III	43	17
D. Stephen, 12th B.B.	33	15
J. Sutherland, 9th B.B.	39	18
T. Searle, S'hill III	41	19
J. Ferrier, Gracemount Y.C.	45	21
A. Blair, Post Office VI	45	21
C. Mackay, Post Office VI	33	18
C. Flint, Post Office VI	42	27
D. Pattison, Telford College	29	19

\* Denotes Individual Award for each division.



**EDINBURGH AND DISTRICT  
TABLE TENNIS LEAGUE**

**ALLAN STREET PRESENTATION  
(HANDICAP) TOURNAMENT**

**ENTRY FORM**

An entry form must be completed by EACH competitor and must be returned to:

MRS P. KERR, 46 BARONY TERRACE, EDINBURGH, EH12 8RD.  
NOT LATER THAN 12th MARCH, 1971.

PLEASE ENTER ME AS FOLLOWS:—

EVENT	PARTNER	FEE PER PLAYER
1. Handicap SINGLES		3/- (15np)
*2. Handicap DOUBLES		3/- (15np)
†3. Handicap JUNIOR SINGLES		1/- (5 np)

AMOUNT — Total Remittance — :

\* In event 2 your partner must be named. Entries for "Partner Wanted" will not be accepted.

† Under 18 Years on Date of Tournament.

NAME .....

Block  
Capitals  
ADDRESS .....

CLUB .....

**Edinburgh and District Table Tennis League**  
**EDINBURGH CONFINED CHAMPIONSHIPS**  
**1970 - 71**

**ENTRY FORM**

**MEADOWBANK STADIUM — Saturday, 21st Nov., 1970.**

An Entry Form must be completed by each competitor and must be returned to:

MRS P. KERR, 46 BARONY TERRACE, EDINBURGH, EH12 8RD.

PLEASE ENTER ME AS FOLLOWS:

EVENT	PARTNER	FEE PER PLAYER
1. OPEN SINGLES		5/- (25np)
*2. MINOR SINGLES		5/- (25np)
3. LADIES SINGLES		5/- (25np)
†4. OPEN DOUBLES		3/- (15np)

AMOUNT — Total Remittance — :

\* Event 2 is restricted to players playing in the 2nd Division or below of the Edinburgh and District League.

† In Event 4 your partner must be named. Entries for "Partner Wanted" will not be accepted.

NAME .....

Block  
Capitals  
ADDRESS .....

CLUB .....

## CLUBS IN MEMBERSHIP

### AINSLIE PARK SCHOOL ✓

CLUB ADDRESS—Pilton Avenue, Edinburgh, 5.  
SECRETARY—A. Grant, Esq., c/o P.E. Dept., Ainslie Park School,  
Pilton Avenue, Edinburgh, 5. Tel.: 552/2884(B).  
TEAM SECRETARIES—as above.

DIRECTIONS—Bus Nos. 17, 19 to stop beyond Crewe Toll. School 50 yards down Pilton Avenue on right.

\* Visiting Clubs are requested to be ready to start matches at 7 p.m. (See Rule 9b).

### ALLAN ST. T.T. CLUB

CLUB ADDRESS—C/o Murrayfield Memorial Club, 17 Corstorphine Road, Edinburgh.

SECRETARY—N. Ross, Esq., 65 Comely Bank Road, Edinburgh.

TEAM SECRETARIES—Club Secretary.

DIRECTIONS—Bus Nos. 12 and 26 to stop past Roseburn. Continue on Main Road—Club 200 yards past Car Showroom.

### BEECHWOOD TABLE TENNIS CLUB

(West Edinburgh Railwayman's Club)

CLUB ADDRESS—West Edinburgh Railwayman's Club, 1 Hampton Terrace, Edinburgh.

SECRETARY—Eric G. Caw, Esq., 7 Broomhouse Avenue, Edinburgh.  
Tel: 443/1107 (Home). 556/2477 Ext. 440 (Business).

TEAM SECRETARIES—Club Secretary.

DIRECTIONS—Bus Nos. 12, 26, 28 and 31 from Town to the second stop beyond Haymarket. Walk back—80 yards—Club on right.

### 3rd MAYFIELD BOYS' BRIGADE

CLUB ADDRESS—Guild Hall, Gifford Park, Edinburgh.

SECRETARY—William Pearson, Esq., 15 East Mayfield, Edinburgh.  
Tel: 667 6119.

TEAM SECRETARIES—as above.

DIRECTIONS—Second on right off Buccleuch Street, travelling from Hope Park.

### 9th EDINBURGH BOYS' BRIGADE

CLUB ADDRESS—Tron Church, Moredun, Edinburgh.

SECRETARY—W. W. Syson, Esq., 304 Gilmerton Road, Edinburgh.  
Tel: 664 3857.

TEAM SECRETARY—J. Sutherland, Esq., 27 Moredun Park Street, Edinburgh 9. Tel.: 664 3612.

DIRECTIONS—Bus Nos. 33 and 49 to Little France terminus.

### 12th EDINBURGH BOYS' BRIGADE

CLUB ADDRESS—Greenaway Memorial Clubrooms, 33 Polwarth Crescent, Edinburgh.

X SECRETARY—William Moffat, Esq., 7 Horne Terrace, Edinburgh EH11 1JL.  
Tel. 229 3902.

TEAM SECRETARIES—1st Team—William Moffat—as above.  
2nd Team—William Moffat—as above.

DIRECTIONS—Bus Nos. 9, 10 or 27 to Merchiston Avenue stop. At corner of Polwarth Crescent is Bank. Club is on left side of Street, 60 yards from Bank.

### 28th EDINBURGH BOYS' BRIGADE

CLUB ADDRESS—Niddrie Mill Primary School Annexe, Off Hay Drive, Edinburgh.

X SECRETARY—T. Agnew, Esq., 7 Harewood Drive, Edinburgh 9.  
Tel: 661/3929.

TEAM SECRETARY—as above.

DIRECTIONS—Bus Nos. 2, 12, 14 to Hay Drive Bus Terminus—continue along Hay Drive to first turn on right—back entrance to School 50 yards along on right.

### BROWN BROS. & CO. LTD.

CLUB ADDRESS—Broughton Road, Edinburgh 7.

X SECRETARY—D. Ewart, Esq., 1 Broomhall Place, Edinburgh, 12.  
Tel.: Wav. 2440 (Ext. 65).

TEAM SECRETARY—as above.

DIRECTIONS—Bus Nos. 11, 14, 34, 35—Staff Canteen. Entry only by Pilrig Gardens off Pilrig Street.

### CENTRAL GARAGE (E,C,T.)

CLUB ADDRESS—Annandale Street, Edinburgh 7.

X SECRETARY—D. Smith, Esq., 13 Wardlaw Place, Edinburgh 11.

TEAM SECRETARY—as Club Secretary.

DIRECTIONS—Bus Nos. 33 and 34 to Longstone Road Clubroom in Bowling Green Pavilion at Longstone Garage.

\* Visiting teams are requested to be ready to start matches at 7 p.m. (See Rule 9b.).

### CENTURY INSURANCE T.T. CLUB

CLUB ADDRESS—18 Charlotte Square, Edinburgh, 2.

4 SECRETARY—J. S. Murdoch, Esq., 88 Redford Avenue, Edinburgh, 13.  
Tel.: 225/6151 (Business).

TEAM SECRETARIES—

1st Team—Club Secretary.

2nd Team—G. M. Watt, Esq., 40 Mayburn Avenue, Loanhead.  
Tel.: 225/6151 (Business).

? DIRECTIONS—On West side of Charlotte Square, next to St. George's Church.

### CIVIL SERVICE CLUB

CLUB ADDRESS—50 Great King Street, Edinburgh, 3.

SECRETARY—L. Mollison, Esq., 15 Comely Bank Grove, Edinburgh, 4.  
Tel: 332/6082 (Home) 556/2371 (Business).

TEAM SECRETARIES—1st Team: Club Secretary.

2nd Team: A. Purves, Esq., 196 Pilton Avenue, Edinburgh.  
Tel: 229 2433, Ext. 360 (B).

3rd Team: L. S. Mollison, Esq., 15 Comely Bank Grove, Edinburgh, 4.  
Tel.: 332/6082 (Home)

DIRECTIONS—Bus Nos. 23 and 27 down Hanover Street to Great King Street on left.

### CLERMISTON Y.M.C.A.

CLUB ADDRESS—Parkgrove Terrace, Edinburgh.

SECRETARY—Leslie Mitchell, Esq., 15 Parkgrove Drive, Edinburgh.  
Tel: 336 3986 (Club).

TEAM SECRETARY—as above.

DIRECTIONS—Bus No. 18 or any S.M.T. Bus going to Fife from Town, to Parkgrove Garage. Up Parkgrove Avenue, turn right into Parkgrove Terrace. New Y.M.C.A. building with red Triangle faces you.

### CRAIGMILLAR BOYS' CLUB

CLUB ADDRESS—98 Craigmillar Castle Avenue, Edinburgh. EH16 4DW.

SECRETARY—Douglas Sloway, Esq., 16 West Court, Thistle Foundation, Edinburgh 9. Tel: 661 4064.

TEAM SECRETARIES—1st Team—as above.

DIRECTIONS—Bus Nos. 2, 2A, 12, 14, 36 to Niddrie Farm Grove. Go up Grove to cross-roads. Club at right corner of Greendykes Road and Craigmillar Castle Avenue.

### CRUDENS T.T. CLUB

CLUB ADDRESS—Musselburgh Community Centre, Stoneyhill, Musselburgh.

SECRETARY—J. Bogie, Esq., 56 Duddingston Park, Edinburgh 15.  
Tel: 669 4299 (Home); 665 3811 (Business).

TEAM SECRETARIES—

1st Team: J. Bogie, Esq., Address, Tel. as above.

2nd Team: D. Griffiths, Esq., 3 Southfield Square, Edinburgh 15.  
Tel.: 669 2089 (Home), Port Seton 231 (Business).

3rd Team: W. Mather, Esq., 6 Alderston Road, Haddington. —  
Tel.: Haddington 3456 (H); 665 3811 (Business).

DIRECTIONS—Take right fork at "Crudens" 2nd opening on right.

### CUSTOMS AND EXCISE

CLUB ADDRESS—Custom House, Commercial Street, Leith.

SECRETARY—R. Cormack, Esq., 10 Bruntsfield Avenue, Edinburgh.  
Tel: 229/8559 (H); 554/2421 Ext. 25 (B).

TEAM SECRETARIES—Club Secretary as above.

DIRECTIONS—Bus No. 16 to Custom House. Bus No. 1 to Bernard Street. Bus No. 22 to north end of North Junction Street.

### EDINBURGH CITY POLICE T.T. CLUB

CLUB ADDRESS—28 York Place, Edinburgh.

✓ SECRETARY—Neil Young, Esq., 66 Silverknowes View, Edinburgh.  
Tel: 336 5805.

TEAM SECRETARIES—

1st Team—Club Secretary.

2nd Team—Club Secretary.

3rd Team—A. Arnot, Esq., 2/2 Muirhouse Drive, Edinburgh.

4th Team—Miss J. Ferrier, 87 Gracemount Avenue, Edinburgh.

DIRECTIONS—Bus Nos. 4, 11, 19, 22, 42 and 44 to York Place.

### EDINBURGH MACCABI T.T. CLUB

CLUB ADDRESS—27 Salisbury Road, Edinburgh, 9.

✓ SECRETARY—P. Vinestock, Esq., 1 Bruntsfield Gardens, Edinburgh, 10.  
Tel: 229/4831 (Home).

TEAM SECRETARIES—

1st Team—Club Secretary.

2nd Team—C. Mendick, Esq., 4 Seton Place, Edinburgh. Tel: 667 6859.

✓ DIRECTIONS—Bus Nos. 3, 5, 7, 8, 18, 29, 31 and 33 to Salisbury Road.  
Large house opposite Synagogue.

### EDINBURGH UNIVERSITY T.T. CLUB

CLUB ADDRESS—47 Pleasance, Edinburgh, 8.

✓ SECRETARY—D. George, c/o University Union, Park Place, Edinburgh 8.  
Tel.: 667 2091.

TEAM SECRETARIES—

1st Team—D. George, Esq., address as above; Tel.: 667 2091.

2nd Team—D. Cumming, Esq., address as above; Tel.: 667 2091.

3rd Team—P. Henley, Esq., address as above; Tel.: 667 2091.

4th Team—A. Midsitey, Esq., address as above; Tel.: 667 2091.

DIRECTIONS—From Bridges down Drummond Street, turn right at foot  
—Premises on left.

\* Visiting Clubs are requested to be ready to start matches at 7 p.m.  
(See Rule 9b).

### FERRANTI TABLE TENNIS CLUB

CLUB ADDRESS—Club Pavilion, Crewe Toll, Edinburgh.

✓ SECRETARY—Jas. Kilman, Esq., 115 Crewe Crescent, Edinburgh. EH5 2JN.  
Tel.: 552 3834 (Home); 337 2442 Ext. 252 (Business).

TEAM SECRETARIES—as above.

DIRECTIONS—Bus Nos. 1, 17, 19, 27 and 47 to Crewe Toll. Club  
premises opposite Service Station.

### FETTESIAN-LORETTONIAN BOYS' CLUB (Fet-Lor. Boys' Club)

CLUB ADDRESS—Crewe Road South, Edinburgh. EH4 2NY.

✓ SECRETARY—D. I. McGregor, Esq., Fet-Lor Boys' Club, Crewe Road  
South, Edinburgh EH4 3NY. Tel.: 332 4506.

TEAM SECRETARIES—as Club Secretary.

DIRECTIONS—Bus Nos. 17, 19, 47 to first stop beyond Western General  
Hospital. Club opposite—adjacent to Telford College.

F. E. C.

CLUB ADDRESS—Heriot Watt Sports Pavilion, Paties Road, Colinton, Edinburgh, 13.

SECRETARY—Mrs J. Farquhar, 39 Marchmont Crescent, Edinburgh 9.  
Tel.: 229/5850.

TEAM SECRETARIES—Club Secretary as above.

DIRECTIONS—Bus Nos. 9 and 10 to Redford Barracks. Playing Field on right opposite Barracks.

**GAMBIT TABLE TENNIS CLUB**

CLUB ADDRESS — c/o North Merchiston Club, Watson Crescent, Edinburgh, 11.

SECRETARY—Mrs P. Kerr, 46 Barony Terrace, Edinburgh, EH12 8RD.  
Tel.: 334 4444.

TEAM SECRETARIES—

1st Team—Robert Kerr, Esq., 46 Barony Terrace, Edinburgh. EH12 8RD.

2nd Team—Peter Shanley, Esq., 40 Niddrie Marischal Place, Edinburgh 9.  
Tel.: 226 4391—Ext. 33 (Business).

3rd Team—Derek Osprey, Esq., 8 Mountcastle Grove, Edinburgh 8.  
Tel.: 669 4712 (Home).

4th, 5th and 6th Teams—as Club Secretary.

6th Team matches will be played at Tynecastle Boys' Club.

DIRECTIONS—Bus Nos. 1, 34, 35, 45 and 46 to Dundee Street—Up Fowler Terrace—2nd on right is Watson Crescent.

**GRACEMOUNT YOUTH CENTRE**

CLUB ADDRESS—128 Lasswade Road, Edinburgh, 9.

SECRETARY—James Ferrier, Jr., 87 Gracemount Avenue, Edinburgh 9.  
Tel.: 664 3275.

TEAM SECRETARIES—1st Team—as Club Secretary.  
2nd Team—as Club Secretary.

DIRECTIONS—Bus Nos. 31, 37 to Southfield Hospital. Cross road and up drive.

**H.M. PRISON**

CLUB ADDRESS—Saughton, Edinburgh 11.

SECRETARY—J. Dow, Esq., (Asst. Govnr.), H.M. Prison, Saughton, Edinburgh, 11. Tel.: 443/6156.

TEAM SECRETARIES—as above.

DIRECTIONS—Bus Nos. 3, 22 or 33 to Calder Road—Stenhouse Road.

\* Visiting teams are requested to be ready to start matches at 7 p.m. (See Rule 9b).

\* All matches are played on Thursday at home.

**MACTAGGART SCOTT TABLE TENNIS CLUB**

CLUB PREMISES—Station Iron Works, Loanhead, Midlothian.

SECRETARY—R. R. Mitchell, Esq., 4 Fowler Crescent, Loanhead, Midlothian. Tel.: Loanhead 311 (Business).

TEAM SECRETARIES—

1st Team—D. Dalgleish, Esq., 10 Bonnyrigg Road, Gorebridge.  
Tel.: Loanhead 311 (B).

2nd Team—Club Secretary.

3rd Team—A. Aikman, Esq., 5 Hunter Avenue, Loanhead.  
Tel: Nivensknowe 462 (H); Loanhead 311 (B).

4th Team—G. Todd, Esq., 2 Sherwood Terrace, Bonnyrigg.  
Tel.: Loanhead 311 (B).

5th Team—Club Secretary.

DIRECTIONS—By Bus—take Foundry Lane from town centre; follow signs to Hospital. By car—along Hunter Avenue (off Loanhead High Street).

### MINISTRY OF HEALTH AND SOCIAL SECURITY

✓ CLUB ADDRESS—Maratine House, The Shore, Edinburgh, 6.

SECRETARY—R. E. Steele, c/o above address.

DIRECTIONS—Bus No. 1, 16, 35 to The Shore, Leith.

### MINISTRY OF PUBLIC BUILDINGS AND WORKS

2 CLUB ADDRESS—Argyle House, Lady Lawson Street, Edinburgh.

SECRETARY—J. Clark, 12 David Scott Avenue, Mayfield, Dalkeith.  
Tel.: 229 2585 Ext. 5223 (Business).

TEAM SECRETARIES—Club Secretary as above.

DIRECTIONS—From ABC Cinema, Lothian Road—along Bread Street to junction of West Port and Lady Lawson Street—large new building—  
West Port Entrance—Room C228—ask for Table Tennis Room.

### MUIRHOUSE CIVIL SERVICE

✓ CLUB ADDRESS—Civil Service Sports Pavilion, Marine Drive, Edinburgh, 4.

SECRETARY—G. E. Brewerton, Esq., 5 Muirwood Drive, Currie.  
Tel.: 449/2411 (Home). 443/4040 Ext. 164 (Business).

TEAM SECRETARIES—Club Secretary as above.

DIRECTIONS—Bus Nos. 8, 14, 17, 47 to Muirhouse Roundabout.  
Club 150 yards down Marine Drive on left.

### MURRAYFIELD MEMORIAL T.T. CLUB

✓ CLUB ADDRESS—17 Corstorphine Road, Edinburgh, 12.

SECRETARY—J. H. S. Cowan, Esq., 56 Lochrin Buildings, Edinburgh 3.  
Tel.: 229 2972 (Home); 225 1281 (Ext. 11) (Business).

TEAM SECRETARIES—Club Secretary.

DIRECTIONS—Bus Nos. 12, 26, 31 to Roseburn Bridge. Continue on main road approximately 100 yards—Club just beyond car showroom.

### MUSSELBURGH COMMUNITY CENTRE

✓ CLUB ADDRESS—Stoneyhill, Musselburgh.

SECRETARY—R. Rutherford, Esq., 8 Stoneybank Road, Musselburgh.  
Tel.: 665 2323 (Business).

TEAM SECRETARIES—

1st Team—as Club Secretary above.

✓ 2nd Team—J. M. C. Cook, Esq., 27 Lee Crescent, Edinburgh 15.  
Tel.: 669 2209.

DIRECTIONS—Take right fork at "Crudens"—Second opening on right.

### NORTH MERCHISTON BOYS' CLUB

✓ CLUB ADDRESS—Watson Crescent, Edinburgh, 11.

SECRETARY—Alan McKean, Esq., 7 Ritchie Place, Edinburgh 11. ✓  
Tel.: 337 5978 (H).

TEAM SECRETARIES—

1st Team—Club Secretary as above.

✓ 2nd Team—Kenneth Wishart, Esq., 34 Harrison Gardens, Edinburgh 11.  
Tel.: 337 5582.

✓ 3rd Team—Leslie Hanratty, Esq., 11 Wardlaw Place, Edinburgh 11.

DIRECTIONS—Bus Nos. 1, 34 and 35 to Dundee Street—Up Fowler Terrace—2nd opening on right is Watson Crescent.



## PENTLAND COMMUNITY CENTRE

CLUB ADDRESS—Oxgangs Brae, Edinburgh.

SECRETARY—Mr Lighthouse, c/o Pentland Community Centre (Table Tennis Section), Oxgangs Brae, Edinburgh. Tel.: 445/2871.

### TEAM SECRETARIES—

1st Team—John Duncan, Esq., 44 Oxgangs Farm Grove, Edinburgh 13.  
Tel.: 441/2088.

2nd Team—Club Secretary as above.

DIRECTIONS—Bus Nos. 4, 16 or 27 to "Good Companions" Roadhouse—Centre behind Roadhouse.

## PHOENIX YOUTH CLUB

(For the Disabled)

CLUB ADDRESS—Harrison Gardens, Edinburgh 11.

SECRETARY—Mrs Jeffrey, c/o Phoenix Club.

Tel.: 337/5065 (Home); 337/2171 (Club—Wednesday and Friday nights only).

DIRECTIONS—Bus Nos. 4, 44 to lights at Ardmillan Terrace—up Harrison Road—Gardens on right.

## PLEASANCE TRUST BOYS' CLUB

CLUB ADDRESS—68 Pleasance Edinburgh.

SECRETARY—Brian Wilson, Esq., 100/8 Pleasance, Edinburgh EH8 9TH.

### TEAM SECRETARIES—

1st Team—Club Secretary as above.

2nd Team—D. Tucker, Esq., 10 Hyvots Green, Edinburgh.

3rd Team—G. Glancy, Esq., 28 West Port, Edinburgh.

DIRECTIONS—Any Bus to Surgeon's Hall—along Hill Place—turn left then right (W. Adam Street)—down Street to foot—straight across road—through archway on opposite side.

## POST OFFICE TABLE TENNIS CLUB

CLUB ADDRESS—Post Office Telephone Exchange, Upper Gray Street, Newington, Edinburgh.

SECRETARY—K. Cadogan, Esq., 29 Lampacre Road, Edinburgh 12.

Tel.: 334 7680 (H); 443 6141 Ext. 25 (Business).

### TEAM SECRETARIES—

1st Team—I. Simpson, Esq., 18 Newmains Road, Kirkliston, Midlothian.

Tel.: 550 9754 (B).

2nd Team—Club Secretary.

3rd Team—R. W. Hogg, Esq., 19 Wester Broom Drive, Edinburgh 12.

Tel.: 667 1011 Ext. 2263 (B).

4th Team—A. Redpath, Esq., 125 Broughton Road, Edinburgh 7.

Tel.: 661 2201 (B).

5th Team—C. Flint, Esq., 170 Carrickknowe Road, Edinburgh 12.

Tel.: LE1 6268 (B); 334 7000 (H).

6th Team—A. Blair, Esq., 9/3 Oxgangs Place, Edinburgh 13.

Tel.: 441 2739.

7th Team—A. McDonald, Esq., 19 Westfield Road, Edinburgh 11.

Tel.: 226 6977 (B); 337 4429 (H).

8th Team—A. Owenson, Esq., 27 Watertoun Road, Edinburgh.

Tel.: 667 1322 (B); 667 4964 (H).

DIRECTIONS—Bus Nos. 3, 7, 8, 18, 20, 27 to Minto Hotel—Duncan Street opposite—Upper Gray Street first right—Exchange on corner.

### PRESTON LODGE SCHOOL

CLUB ADDRESS—Prestonpans, East Lothian.

SECRETARY—Miss J. M. McKay, 48 Redford Road, Edinburgh. EH13 0AE.  
Tel.: 441 1904 (Home). ✓

#### TEAM SECRETARIES—

1st Team —Miss Sandra Walker, 86 Inch View, Prestonpans.  
Tel.: Prestonpans 195 (Home).

DIRECTIONS—North Berwick bus to Preston Shrine; go north along Schaw Road; new school on left past crossroads.

### REGISTER HOUSE

CLUB ADDRESS—Register House, Princes Street, Edinburgh, 2.

SECRETARY—A. B. Farmer, Esq., 243 Dalkeith Road, Edinburgh.  
EH16 5JS.

Tel.: 556 2561 Ext. 80 (Business). ✓

#### TEAM SECRETARIES—

1st Team—Club Secretary as above.

2nd Team—J. Tully, Esq., 15 Hazelwood Grove, Edinburgh 9.

Tel.: 556 2561 Ext. 21 (Business).

DIRECTIONS—Past side entrance of Woolworth's, through large gate, bear right and follow path.

### ROVER SCOUTS

CLUB ADDRESS—Scout Hall, South Trinity Road, Edinburgh.

SECRETARY—A. R. Brown, Esq., 14 Pirniefield Terrace, Edinburgh 6.  
Tel.: 554/5600 (Home). ✓

DIRECTIONS—Bus Nos. 1, 8, 19 to Goldenacre lights, South Trinity Road opposite.

### ROYSTON BOYS' CLUB

CLUB ADDRESS—Royston Mains Gardens, Edinburgh, 5.

SECRETARY—W. Addison, Esq., 1/6 Inchcolm Court, Edinburgh, 4.

#### TEAM SECRETARIES—

1st Team—as Club Secretary.

2nd Team—as Club Secretary.

3rd Team—J. Robertson, c/o Royston Boys' Club, as Club Address.

DIRECTIONS—Bus Nos. 14 or 19 to Embassy Picture House—Club is at the side.

### SCOTTISH PARAPLEGIC ASSOCIATION (EAST BRANCH)

CLUB PREMISES—Cameron House, Cameron House Avenue, Edinburgh.

SECRETARY— Miss L. Whytock, 32 Broomhall Avenue, Corstorphine.  
Edinburgh. Tel.: 334 5744. ✓

TEAM SECRETARY—Mrs V. Robertson, 6 East Court, Thistle Foundation.  
Edinburgh. EH16 4EA. Tel.: 661 3784. ✓

DIRECTIONS—Bus Nos. 33 and 49 to Cameron Toll Cameron House Avenue 100 yards along Peffermill Road.

\* All matches are played on Mondays at home.

### SIGHTHILL YOUTH AND COMMUNITY CENTRE

CLUB ADDRESS—Sighthill Wynd, Edinburgh 11.

SECRETARY—P. Donnachie, Sr., 16 Broomhouse Grove, Edinburgh.  
EH11 3TG.

TEAM SECRETARIES—Club Secretary.

DIRECTIONS—Bus Nos. 22, 34 and 35 to first stop past Silver Wing Club in centre of High Flats.

## THE TARTAN CLUB

CLUB ADDRESS—Staff Canteen, Park Stores, Holyrood Road, Edinburgh 8.  
SECRETARY—Mrs Alice Sherriff, 27 Broomhall Crescent, Edinburgh.  
EH12 7PG. Tel.: 334 3734 (H); 229 7263 Ext. 122 (B).

### TEAM SECRETARIES—

1st Team—G. H. Smith, Esq., 93 East Claremont Street, Edinburgh 7.

Tel.: 556 4751 (H); 556 2591 (B).

2nd Team—Club Secretary as above.

DIRECTIONS—No. 1 Bus to foot of Canongate—along Horse Wynd, turn up Holyrood Road—Club premises 200 yards on left-hand side past second Park Stores entry.

## TELFORD COLLEGE OF F.E.

CLUB ADDRESS—Crewe Toll, Edinburgh, 4.

SECRETARY—R. B. Turnbull, Esq., 22 Old Kirk Road, Edinburgh.  
EH12 6JX. Tel.: 334 3403 (H).

### TEAM SECRETARIES—

1st Team—R. B. Turnbull, as above.

2nd Team—R. B. Turnbull, as above.

DIRECTIONS—Bus Nos. 17, 19, 47 to Crewe Road; second stop after Western General Hospital.

\* Visiting clubs are requested to be ready to start matches at 7 p.m.  
(See Rule 9b).

## TYNECASTLE BOYS' CLUB

CLUB ADDRESS—Pentland School Annexe, Gorgie Road, Edinburgh.

SECRETARY—J. Hall, Esq., 4 Lanark Road, Edinburgh. Tel.: 443 2801.

### TEAM SECRETARIES—

1st Team—D. Hall, Esq., 4 Lanark Road, Edinburgh. Tel.: 443 2801.

2nd Team—B. Robb, Esq., 31 Hutchison Road, Edinburgh.

Tel.: 443 6255.

3rd Team—as second Team.

DIRECTIONS—Bus Nos. 1, 2, 3, 22, 33 35 to lights at Westfield. School Annexe opposite Parkers Stores.

## EDINBURGH Y.M.C.A. TABLE TENNIS CLUB

CLUB ADDRESS—Y.M.C.A., South St. Andrew Street, Edinburgh.

SECRETARY—K. A. Macfarlane, Esq., 4 Mertoun Place, Edinburgh.  
EH11 1JZ. Tel.: 229 1755.

### TEAM SECRETARIES—

1st Team—D. Montgomery, Esq., 12 Boswall Gardens, Granton,  
Edinburgh. EH5 2BN. Tel.: 552 1348 (H).

2nd Team—as above.

3rd Team—as above.

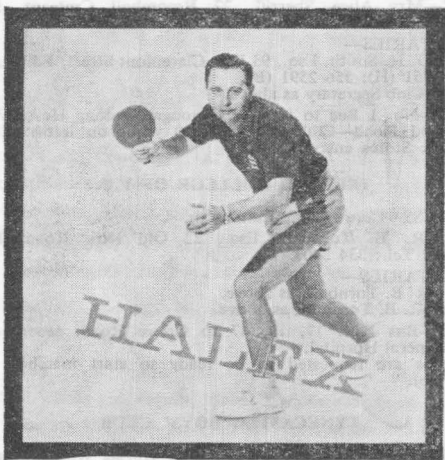
4th Team—as above.

5th Team—as above.

6th Team—as above.

DIRECTIONS—All buses to Waverley, then walk towards St. Andrew Square.

\* Visiting Clubs are requested to be ready to start matches at 7 p.m.  
(See Rule 9b).

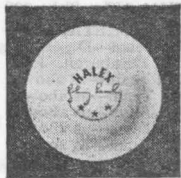


those who play  
to win...

Always choose

**HALEX**

TABLE TENNIS BALLS



# THORNTON'S

FOR  
SPORTS  
EQUIPMENT  
AND  
SPORTSWEAR

TABLE TENNIS  
FOOTBALL  
GOLF  
SWIMMING  
HOCKEY  
NETBALL  
BADMINTON  
SKATING  
ETC.

**THORNTON'S**

72 HANOVER STREET  
EDINBURGH

**EDINBURGH AND DISTRICT  
TABLE TENNIS LEAGUE**  
(Affiliated to the Scottish Table Tennis Association)

---

**CERTIFICATE OF REGISTRATION**

---

This is to Certify that:

NAME:

.....

ADDRESS

.....

.....

is a Member of

.....

.....

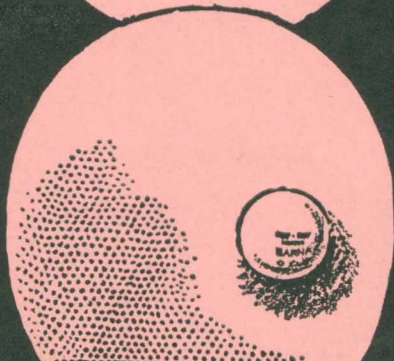
..... Table Tennis Club


Signature of Player .....

A. HAY,  
Match Secretary.

Sock  
it to them  
with

  
**Dunlop**



DUNLOP  JAPANESE FAST

*for greater speed and better balance*


the New  
**'SUPER CHAMPIONSHIP'**  
range of T.T. BATS  
by **JAQUES**  
to the design of  
**English Closed**  
**Triple Champions—**  
**England's TOP STARS**

**DENIS NEALE**

**MARY WRIGHT**

The choice at the top  
is **JAQUES—**  
make it yours

From all good sports shops.  
Colour folder from

**Jaques** & Son Ltd.,

THORNTON HEATH, SURREY CR4 8XP. TEL.: 01-684 4242